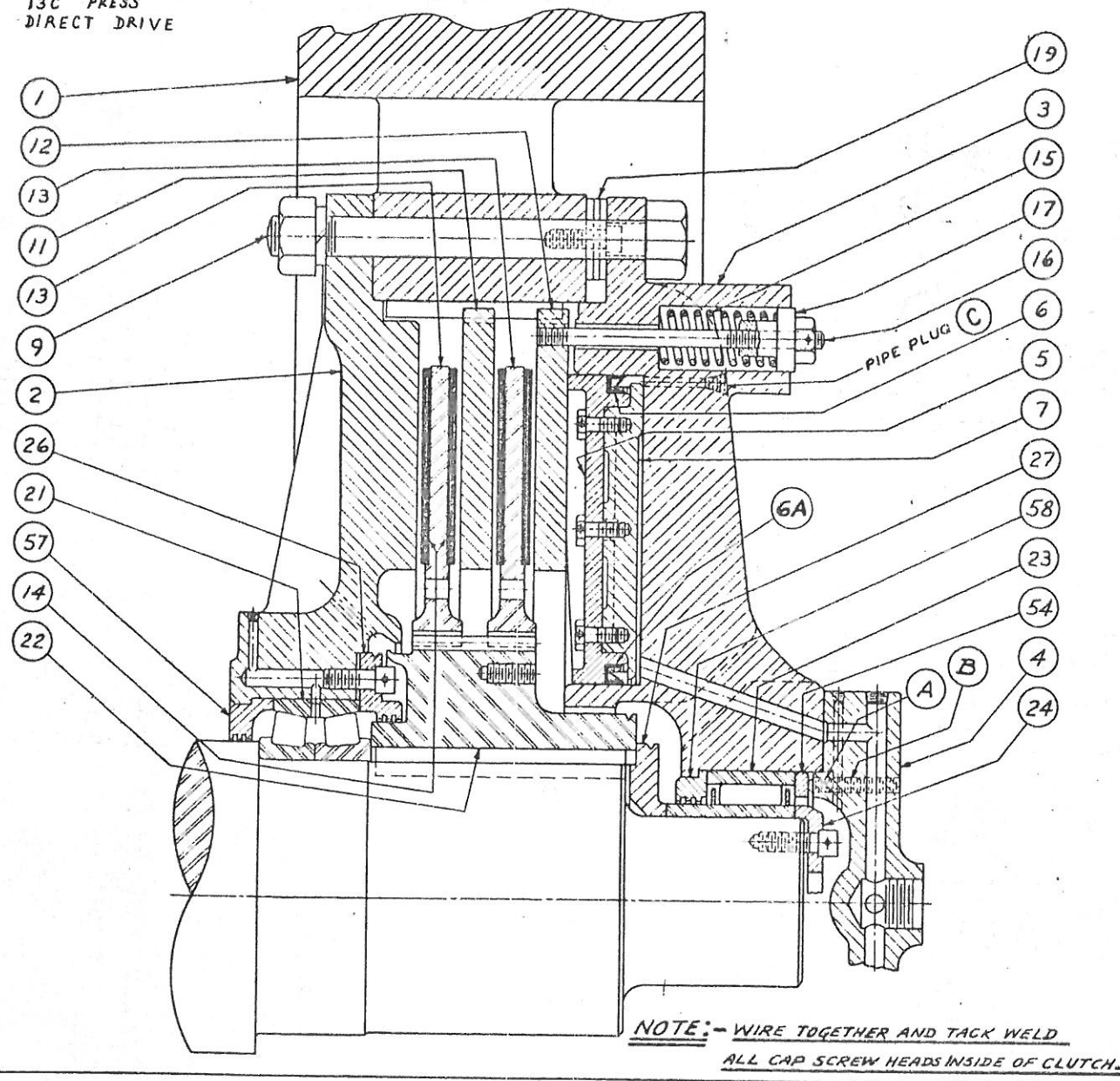


SHEET B-7-C

13C PRESS
DIRECT DRIVE

WHEN ORDERING REPLACEMENTS, STATE SERIAL NUMBER AND SIZE STAMPED ON NAME PLATE OF MACHINE, AND DESIGNATE PART BY BOTH NAME AND NUMBER.

- | | |
|-----------------------------------------------|-----------------------------------------|
| 1 FLYWHEEL | 14 CLUTCH FRICTION SEGMENTS AND RIVETS. |
| 2 INNER CLUTCH FLANGE. | 15 CLUTCH RELEASE SPRINGS. |
| 3 OUTER CLUTCH FLANGE. | 16 CLUTCH RELEASE SPRING STUDS. |
| 4 AIR DISTRIBUTOR CAP. | 17 CLUTCH RELEASE SPRING ADJ. NUTS. |
| 5 CLUTCH PISTON. | 19 CLUTCH ADJ. WASHERS. |
| 6 & 6A CLUTCH PISTON PACKING. (INNER & OUTER) | 21 CLUTCH INNER BEARING. |
| 7 CLUTCH PISTON FOLLOWER RING. | 22 CLUTCH PINION. |
| 9 CLUTCH TIE BOLTS. | 23 CLUTCH OUTER BEARING. |
| 11 CLUTCH CENTER DRIVING PLATE. | 24 CLUTCH SHAFT END PLATE. |
| 12 CLUTCH OUTER DRIVING PLATE. | 26 INNER CLUTCH BRG. RETAINER RING. |
| 13 CLUTCH FRICTION PLATES. | 27 CLUTCH PINION RETAINER RING. |
| | 54 OUTER CLUTCH BRG. CLAMP RING. |
| | 57 INNER CLUTCH FLANGE INSERT. |
| | 58 OUTER CLUTCH FLANGE INSERT. |

THE AJAX MANUFACTURING COMPANY
CLEVELAND (17), OHIO.

ADJUSTMENT

THE CLUTCH MUST RELEASE PROMPTLY A MINIMUM OF $\frac{1}{4}$ " AS MEASURED ON SPRING STUDS (16) WHEN AIR IS EXHAUSTED. IF QUICK OPENING DOES NOT RESULT FROM ADJUSTMENT OF RELEASE SPRINGS (15), INVESTIGATE.

- WHEN TRAVEL OF PISTON EXCEEDS $\frac{3}{8}$ " IT SHOULD BE REDUCED TO $\frac{1}{4}$ " AS FOLLOWS:
- 1- LOOSEN NUTS ON CLUTCH TIE BOLTS (9).
 - 2- REMOVE SUFFICIENT ADJUSTING WASHERS (19) FROM UNDER HEAD OF SOCKET SCREWS TO REDUCE TRAVEL OF CLUTCH PISTON (5) TO $\frac{1}{4}$ ", USING SET SCREWS IN OUTER CLUTCH FLANGE (3) AS JACK SCREWS TO LOOSEN OUTER CLUTCH FLANGE (3) TO FACILITATE REMOVAL OF ADJUSTING WASHERS (19).
 - 3- BACK OFF JACK SCREWS SUFFICIENTLY TO ALLOW NUTS ON CLUTCH TIE BOLTS (9) TO BE DRAWN UP TIGHT WITH OUTER CLUTCH FLANGE (3) SEATING AGAINST ADJUSTING WASHERS (19). ADJUST SET SCREWS TO A FIRM SEAT AGAINST RIM OF FLYWHEEL (1).

FOR DISASSEMBLY OF CLUTCH FROM SHAFT

- 1- BLOCK UP FLYWHEEL WITH STENCIL "TOP" UPPERMOST BY WEDGING BENEATH RIM (1) AND BACKING OUT CAP SCREWS IN MACHINE FRAME AGAINST SIDE OF RIM (1).
- 2- DISCONNECT MAIN AIR SUPPLY LINE AND REMOVE ROTARY AIR DISTRIBUTOR.
- 3- REMOVE CLUTCH TIE BOLTS (9), LEAVING TOP TWO HALFWAY IN HOLES. SLIDE OUTER FLANGE (3), WITH PISTON (5), AND OUTER DRIVING PLATE (12) AS A UNIT OUT HORIZONTALLY TILL THEY CAN BE LIFTED. THEN SLIDE REMAINING CLUTCH PLATES (11) AND (13) OUT OF FLYWHEEL (1).*
- 4- REMOVE SHAFT END PLATE (24), INNER RACE OF BEARING (23) AND PINION RETAINER RING (27).
- 5- PULL CLUTCH PINION (22) WITH STUDS AND CLAMP ACROSS SHAFT END, AFTER FIRST PULLING KEYS.
- 6- REMOVE FLYWHEEL (1) BY UNSCREWING CAP SCREWS FROM INNER FLANGE (2).
- 7- REMOVE INNER FLANGE (2) WITH INNER CLUTCH BEARING (21), AND CLUTCH BEARING RETAINER RING (26) AS A UNIT.
- 8- TO REMOVE INNER CLUTCH BEARING (21) FROM INNER FLANGE (2), DISASSEMBLE BEARING RETAINER RING (26), THEN DRIVE AGAINST INNER FLANGE INSERT (57), TAKING CARE NOT TO DAMAGE CAPILLARY GROOVES.
- 9- TO REMOVE OUTER CLUTCH BEARING (23), SLIGHTLY BACK OFF FOUR LOCKING SET SCREWS "B" AND FOUR SET SCREWS "A". THEN REMOVE AIR DISTRIBUTOR CAP (4), AND DRIVE AGAINST OUTER FLANGE INSERT (58), TAKING CARE NOT TO DAMAGE CAPILLARY GROOVES.
- 10- TO REMOVE ANNULAR PISTON (5) FROM OUTER FLANGE (3), UNSCREW RELEASE SPRING ADJUSTING NUTS (17), FIRST NOTING WHERE THEY WERE SET. REMOVE SPRINGS (15) AND DRIVING PLATE (12). THE PISTON ASSEMBLY PULLS OUT FROM CYLINDER, BUT TO AVOID DAMAGE TO LIPS OF PISTON PKG. (6 & 6A), REASSEMBLE WITH PARTS UNCLAMPED. WITH OUTER FLANGE (3) LYING HORIZONTALLY, PLACE FOLLOWER RING (7) IN CYLINDER, INSERT PISTON PACKING (6 & 6A) WITH EXPANDERS, INSTALL PISTON (5) AND BOLT ASSEMBLY TOGETHER INSIDE CYLINDER, THEN WIRE TOGETHER ALL CAP SCREW HEADS.
- 11- WHEN REASSEMBLING CLUTCH BE CERTAIN TO DRIVE CLUTCH PINION (22) TIGHT HOME. WIRE TOGETHER ALL CAP SCREW HEADS INSIDE OF CLUTCH.
- 12- IF DISTRIBUTOR CAP (4) HAS BEEN REMOVED FROM OUTER CLUTCH FLANGE (3) CHECK THAT LOCKING SET SCREWS "B" AND "A" ARE SLIGHTLY BACKED OFF. BOLT DISTRIBUTOR CAP (4) SECURELY TO OUTER FLANGE (3), TIGHTEN SCREWS "A" AGAINST OUTER CLUTCH BEARING CLAMP RING (54) AND LOCK WITH SCREWS "B".

LUBRICATION

THE CLUTCH INNER BEARING (21), AND CLUTCH OUTER BEARING (23) SHOULD BE LUBRICATED WITH A MODERATE AMOUNT OF GREASE AT TWO WEEK INTERVALS; EXCESS GREASE WILL ONLY FORCE PAST THE RETAINING CAPILLARIES AND THROW TO OUTSIDE OF CLUTCH. LUBRICATE PISTON PKG. (6 & 6A) WEEKLY, WITH HOUGHTON HYDRO-DRIVE M.I.H.-30 OIL, OR EQUIVALENT, THRU PETCOCK IN CLUTCH AIR VALVE.

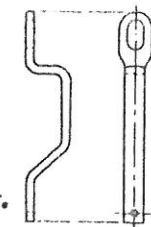
AIR PRESSURE REGULATION

A REGULATING VALVE TO MAINTAIN PRESSURE AS INDICATED ON GAUGE OR GUARD IS PROVIDED WITH MACHINE. THIS REGULATES TORQUE OF CLUTCH TO SAFE CAPACITY OF MACHINE. CLUTCH WILL SLIP AND MACHINE WILL STALL ONLY FROM OVERLOAD, IF AIR IS KEPT AT PROPER PRESSURE AND VALVES ARE OPENING PROPERLY.

* A HOOK AS SHOWN IN SKETCH, IS FURNISHED FOR DISASSEMBLY OF OUTER CLUTCH FLANGE (3) AND CLUTCH PLATES (11), (12), AND (13).

TO CLEAN CLUTCH CYLINDER

REMOVE PIPE PLUGS (C) IN OUTER CLUTCH FLANGE (3) AND, WITH FLYWHEEL (1) REVOLVING, OPEN CLUTCH VALVE WITH FOOT TREADLE, ALLOWING AIR TO BLOW ANY ACCUMULATION IN CYLINDER TO OUTSIDE.



THE AJAX MANUFACTURING COMPANY
CLEVELAND (17), OHIO.