

SECTION IXPARTS LISTS - ADJUSTING WEDGE ARRANGEMENTS

<u>Pc. No.</u>	<u>Name</u>
97L	Adjusting Wedge - LH
97R	Adjusting Wedge - RH
116	Stud (500 lb. thru 5000 lb.)
116	Stud (6000 lb. & larger)
139	Clamp (6000 lb. & larger)
496	Pad (500 lb. thru 5000 lb.)
497L	Block - LH (500 lb. thru 5000 lb.)
497R	Block - RH (500 lb. thru 5000 lb.)

PARTS LISTS - LOCKING ARRANGEMENT WEAR PLATES

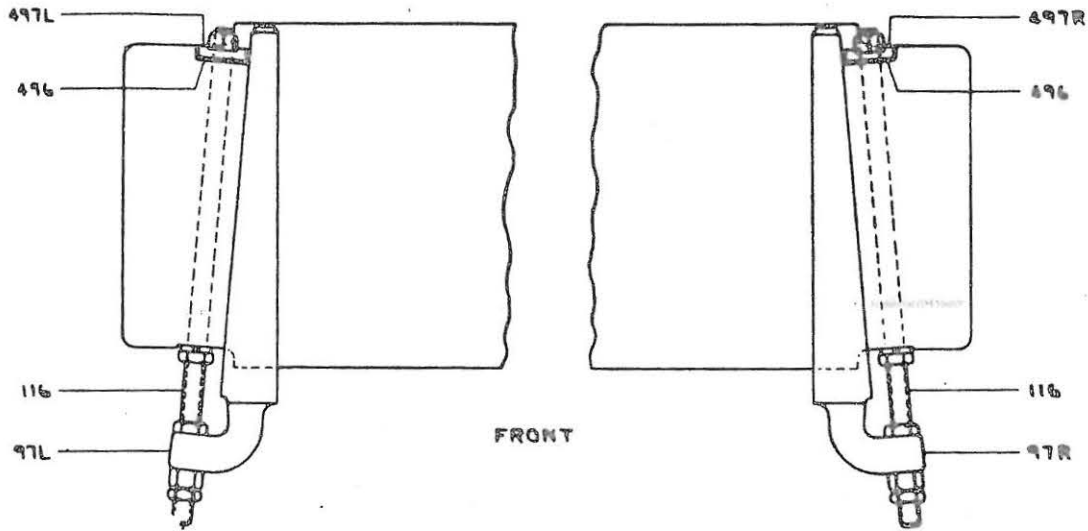
229	Wearing Plate
230	Wearing Plate
465	Stud (500 lb. thru 1500 lb.)
465	Bolt (2000 lb. & larger)
515	Spring (500 lb. thru 1500 lb.)

The amount of frame movement is shown below. For hammers up to 5000 lb. (2268 Kg), this is expressed in movement per full turn, and per flat, of the nuts used to shift the Adjusting Wedges, 97R and 97L. On 6000 lb. (2722 Kg) hammers, frame movement is related to the actual movement of the Adjusting Wedges, 97R and 97L.

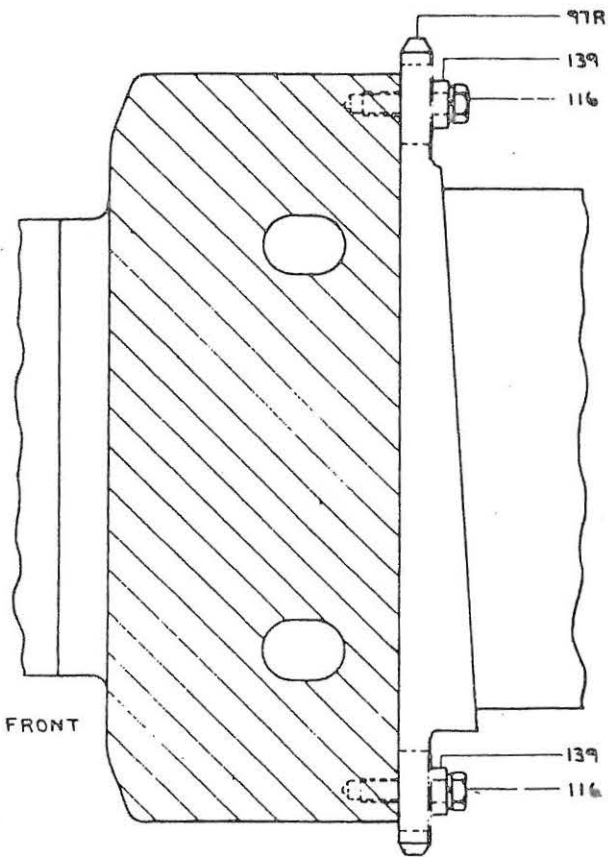
<u>RATED SIZE</u>		<u>FRAME MOVEMENT</u>			
<u>Lbs.</u>	<u>(Kg)</u>	<u>Per Full Turn of Nut</u>		<u>Per Flat</u>	
		<u>Ins.</u>	<u>(mm)</u>	<u>Ins.</u>	<u>(mm)</u>
500	(227)	.010	(.254)	.0017	(.043)
750	(340)	.012	(.305)	.0020	(.051)
1000	(454)	.012	(.305)	.0020	(.051)
1500	(680)	.014	(.356)	.0023	(.058)
2000	(907)	.014	(.356)	.0023	(.058)
2500	(1134)	.014	(.356)	.0023	(.058)
3000	(1361)	.017	(.432)	.0027	(.069)
4000	(1814)	.019	(.483)	.0031	(.079)
5000	(2268)	.019	(.483)	.0031	(.079)
-----					
6000	(2722)	- Frame Movement .015" (.381 mm) per 1/4" (6.35 mm) of Adjusting Wedge Movement.			

NOTE - When making frame adjustments, always be sure the Ram, 5, is down die-to-die, and the air and electrical power are shut off.

SECTION IX - CECO-DROP - LINE DRAWINGS & PARTS LISTS

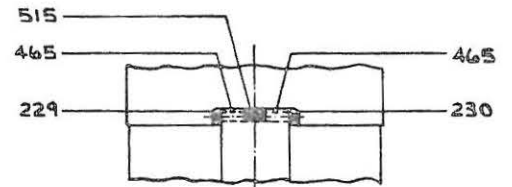


500 TO 5000 LB. CECO-DROP

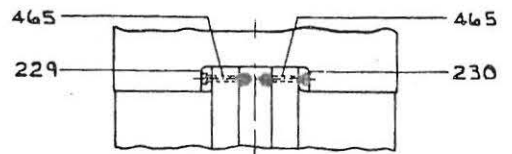


6000 LB. AND LARGER CECO-DROP

VIEW OF ADJUSTING WEDGES



VIEW OF LOCKING ARRANGEMENT FOR 500 TO 1500 LBS. CECO-DROP



VIEW OF LOCKING ARRANGEMENT FOR 2000 LBS. AND LARGER CECO-DROP