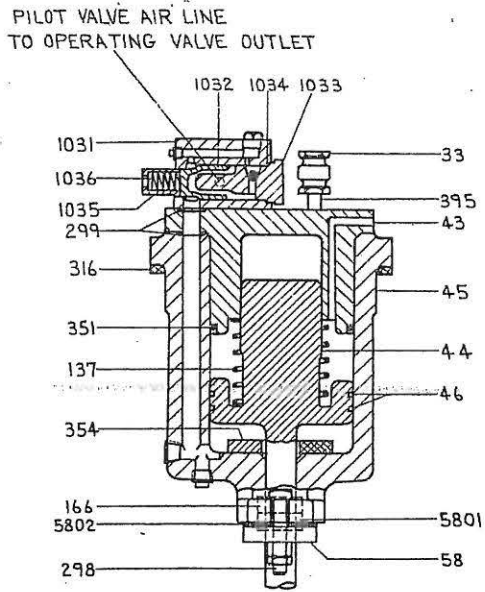


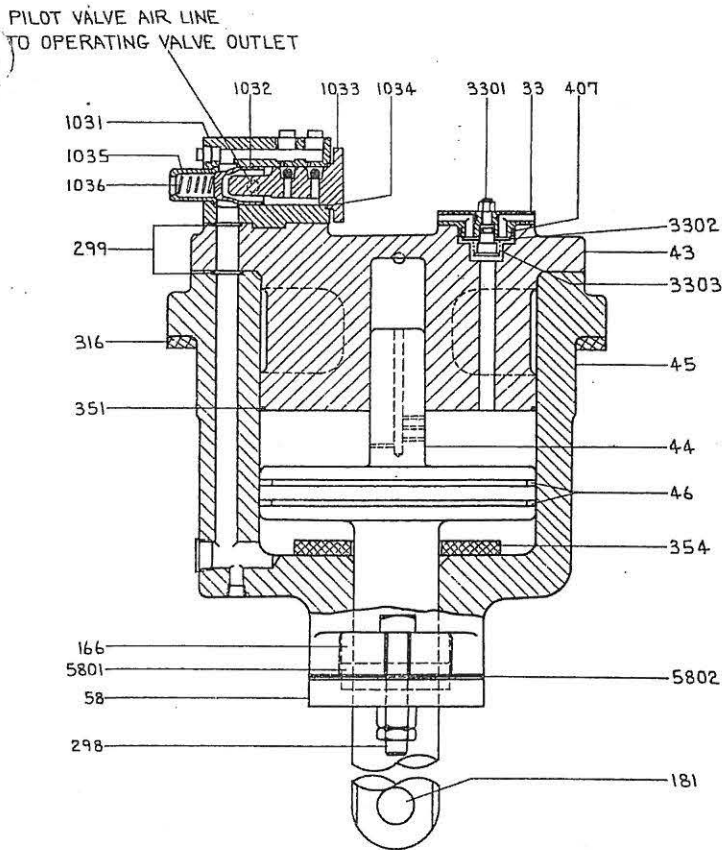
SECTION IXPARTS LISTS - CLAMP CYLINDER (OLD STYLE)

<u>Pc. No.</u>	<u>Name</u>
33	Check Valve
43	Clamp Cylinder Cover
44	Air Clamp Piston
45	Air Clamp Cylinder
46	Air Clamp Piston Rings
58	Gland
5801	Gland Bushing
5802	Shims
1031	Pilot Valve Body
1032	Pilot Valve
1033	Pilot Valve Plug
1034	Pilot Valve Gasket
1035	Pilot Valve Seat
1036	Pilot Valve Spring
137	Clamp Spring
166	Packing
299	"O" Ring
351	"O" Ring
354	Washer
395	Pipe Nipple
102	Operating Valve
105	Board Plate
283	Valve Pad

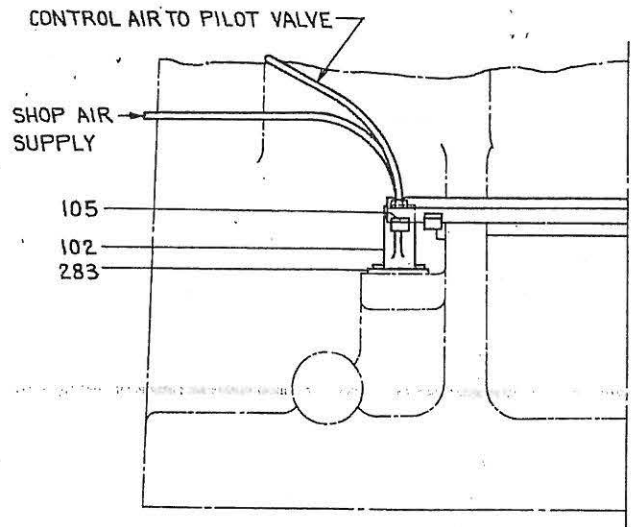
SECTION IX - CECO-DROP - LINE DRAWINGS & PARTS LISTS



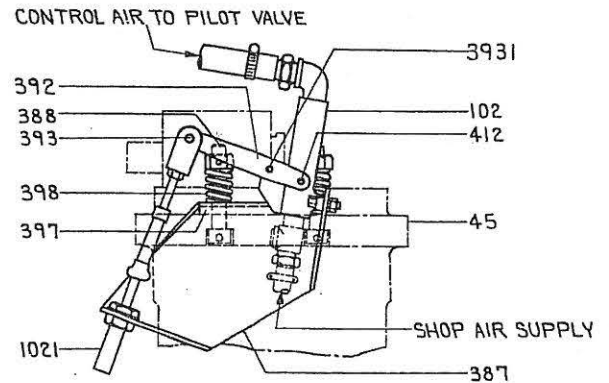
500 TO 5000 LB.



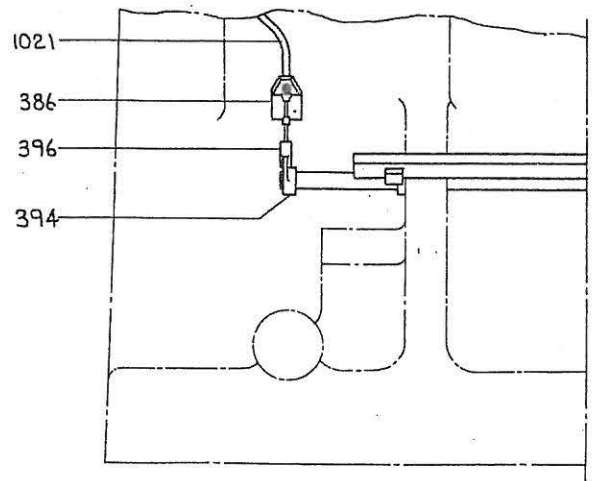
6000 LB. AND LARGER



TREADLE OPERATING CONTROL ARRANGEMENT



YOKE MOUNTED CONTROL ARRANGEMENT FOR 500 TO 5000 LB. CECO-DROP



TREADLE PARTS (OLD STYLE)

SINGLE ACTING CLAMP (OLD STYLE)