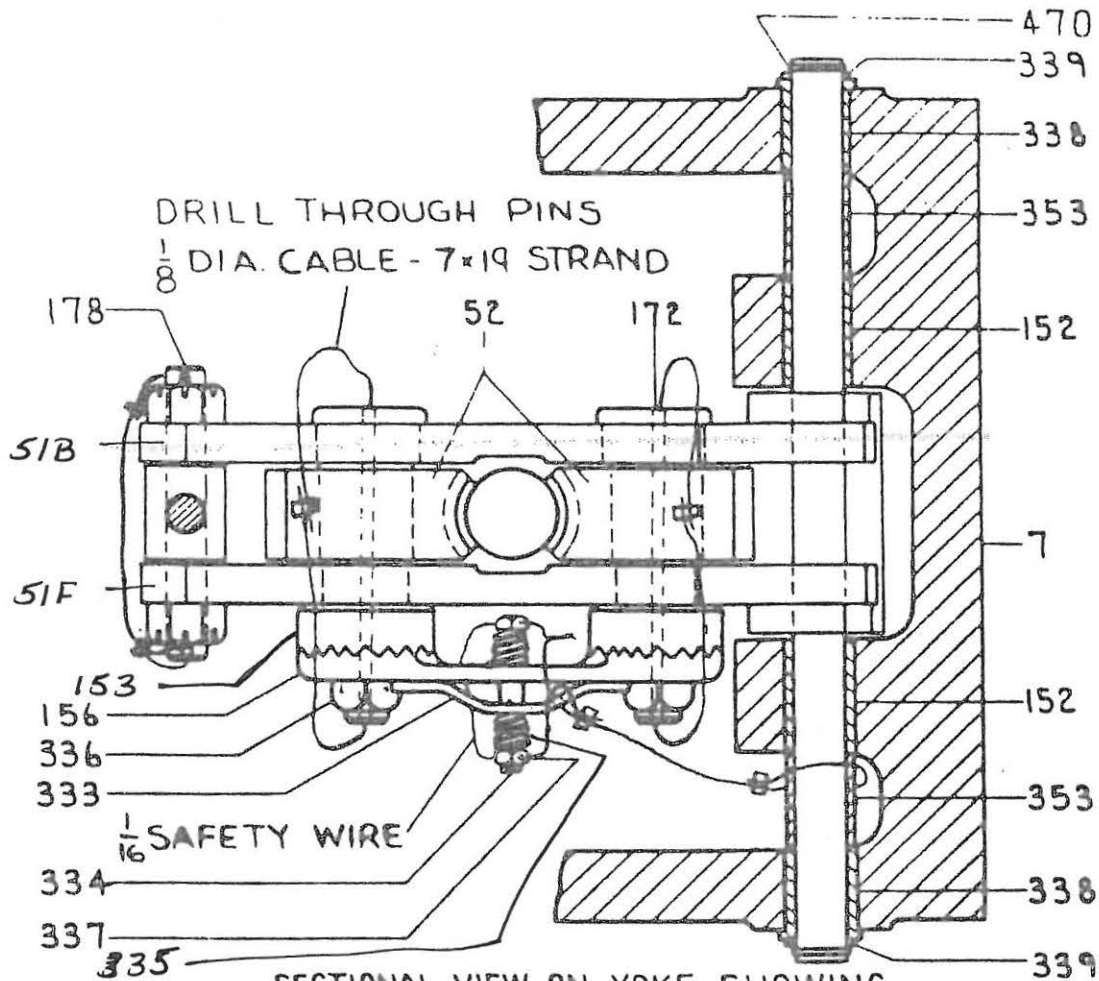


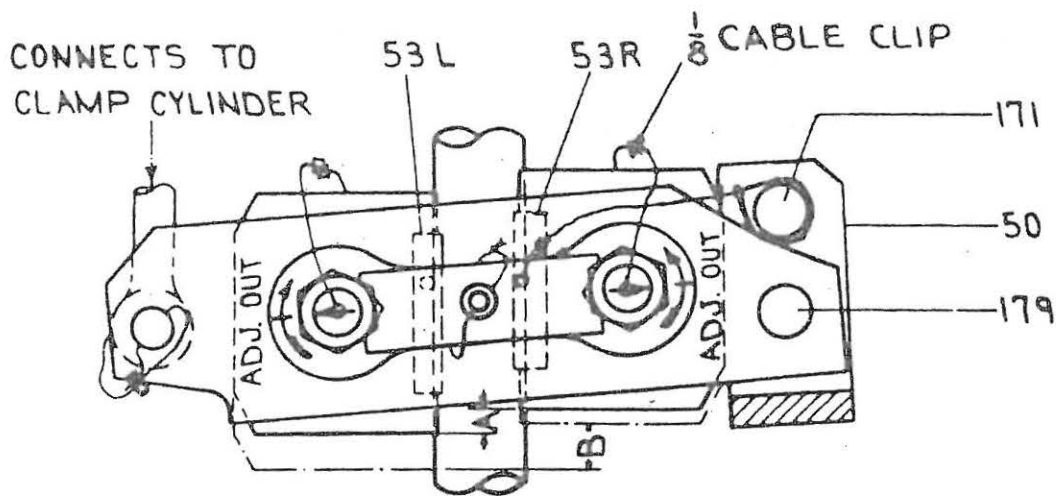
SECTION IXPARTS LISTS - CLUTCH TYPE ROD CLAMP

<u>Pc. No.</u>	<u>Name</u>
7	Yoke
47	Connection Rod
50	Clamp Hanger
51F	Clamp Bar - Front
51B	Clamp Bar - Back
52	Rod Clamp
53L	Half Clamp Bushing - LH
53R	Half Clamp Bushing - RH
152	Bushing
153	Adjusting Clutch
156	Clutch Arm
171	Pin
172	Adjusting Pin
178	Stud
179	Pin (500 lb. thru 5000 lb.)
179	Stud (6000 lb. & larger)
333	Clutch Lock Arm
334	Bolt
335	Spring
336	Nut
337	Nut
338	Bushing
339	Washer
353	Spacer
3531	Spacer (6000 lb. & larger)
470	"O" Ring

SECTION IX - CECO-DROP - LINE DRAWINGS & PARTS LISTS



SECTIONAL VIEW ON YOKE SHOWING
 TOP OF ROD CLAMP AND ROD CLAMP
 HANGER FOR 500 LB. TO 5000 LB. CECO - DROP



A - MINIMUM FALL AFTER ADJUSTMENT
 B - MAXIMUM ALLOWABLE FALL