

SECTION IXPARTS LISTS - DOUBLE ACTING CLAMP CYLINDER

<u>Pc. No.</u>	<u>Name</u>
45	Air Clamp Cylinder
46	Piston Ring
47	Connection Rod
58	Gland
5801	Gland Bushing
5802	Shim
59	Coupling (500 lb. thru 5000 lb. only)
166	Clamp Cylinder Packing
181	Pin
298	Bolt
299	"O" Ring
316	Pad
326	Washer
351	"O" Ring
354	Washer
392	"O" Ring
420	Clamp Valve Seat
421	Clamp Valve
422	Clamp Valve Stem
423	Retainer
424	Coupling
425	Lever
426	Bushing
427	Bushing
428	Pin
429	Pin
430	Pin
431	Valve Bracket
432	Piston Ring
433	Cover
434	Piston Ring
435	Retainer Collar
436	Washer
437	Spring
438	Washer
440	Washer
442	Push-Pull Control
443	Valve Clamp Cylinder Cover
444	Clamp Cylinder Piston
447	Cable Coupling
448	"O" Ring
449	"O" Ring
550	Drain Cock

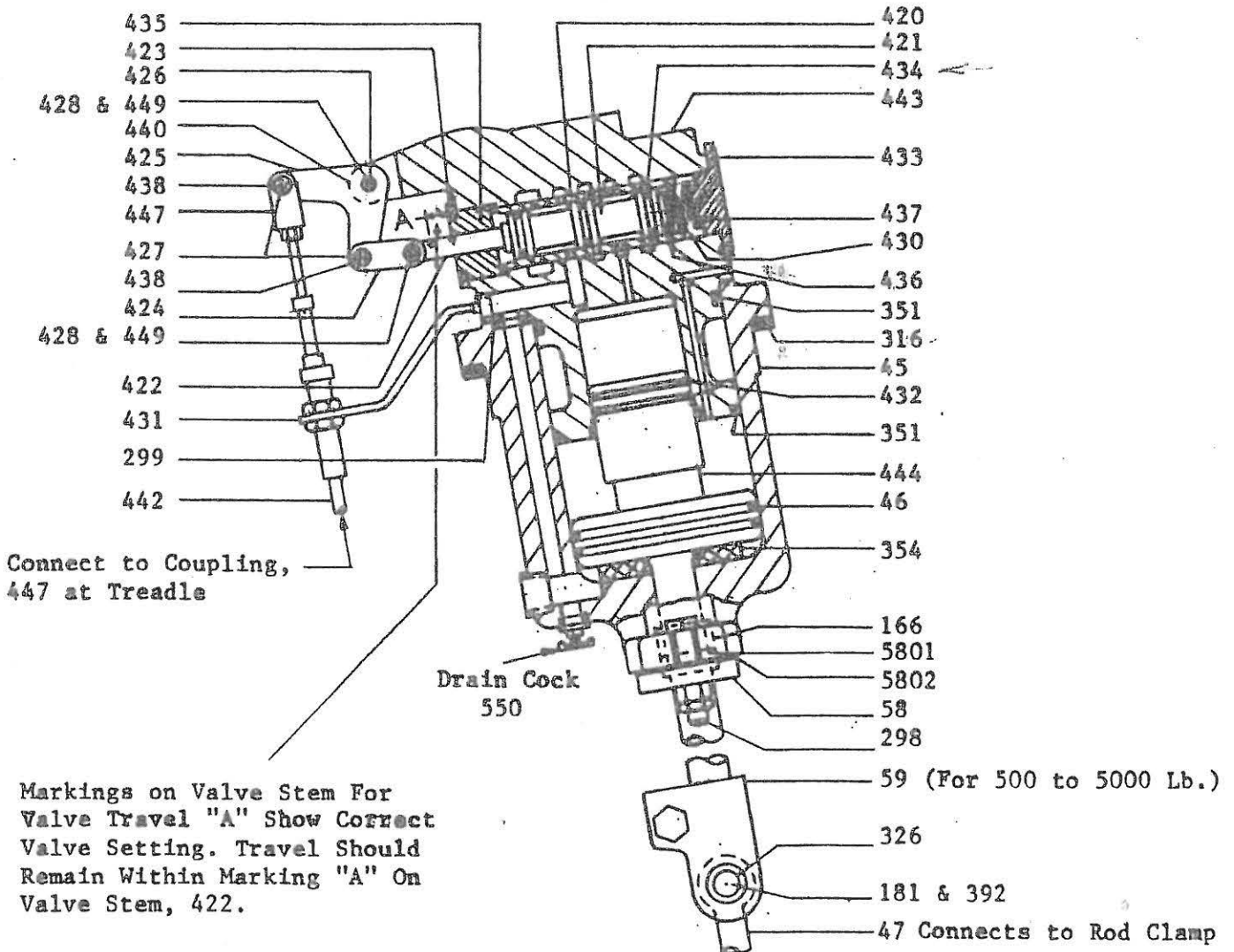
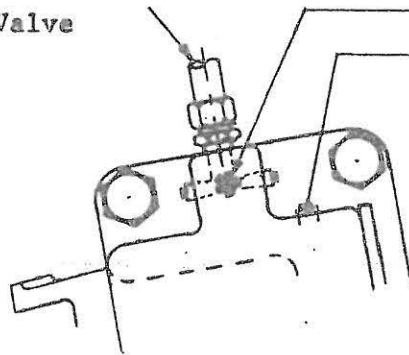
SECTION IX - CECO-DROP - LINE DRAWINGS & PARTS LISTS

From Shop Air Supply Line.
Shutoff Valve, Not Shown, To Be Installed
In Convenient Location In Shop Line.

Hose For Connection Must Be At
Least 18" Long.

Air Hose, Shutoff Valve
and Fittings Not
Furnished By CECO.

Oil Line From Lubricator, 83
1/8" Connection
472



Revised 7/24/72

DOUBLE ACTING CLAMP
CYLINDER ARRANGEMENT