

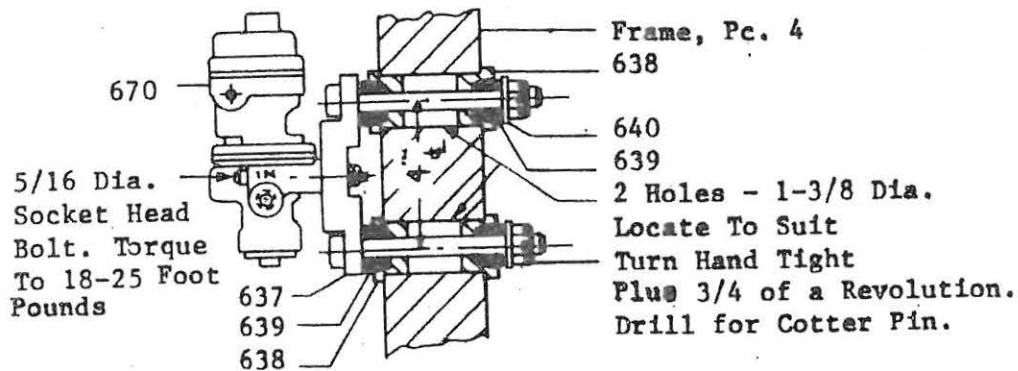
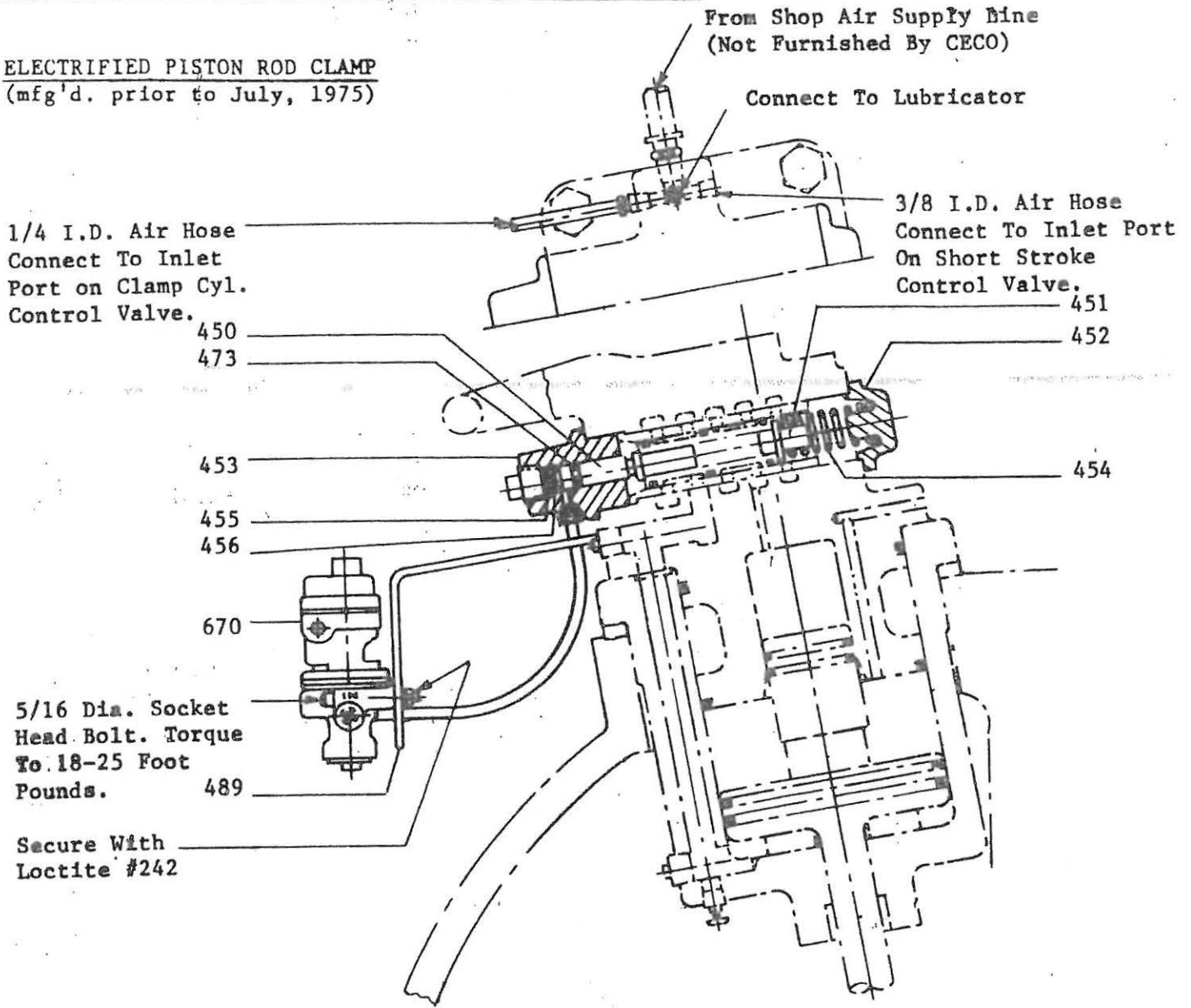
SECTION IX

PARTS LIST - ELECTRIFIED PISTON ROD CLAMP
(manufactured prior to July, 1975)

<u>Pc. No.</u>	<u>Name</u>
4	R.H. Frame
450	Stem
451	Stem
452	Retainer
453	Cover
454	Spring
455	Stop
456	Washer
473	"O" Ring
489	Bracket
602	Valve
637	Bracket
638	Bushing
639	Bushing
640	Washer
670	Solenoid Valve
9501	Control Box
9503	Foot Switch
9505	Running Time Meter
9512	Transformer
9521	Starter

SECTION IX - CECO-DROP - LINE DRAWINGS & PARTS LISTS

ELECTRIFIED PISTON ROD CLAMP
(mfg'd. prior to July, 1975)



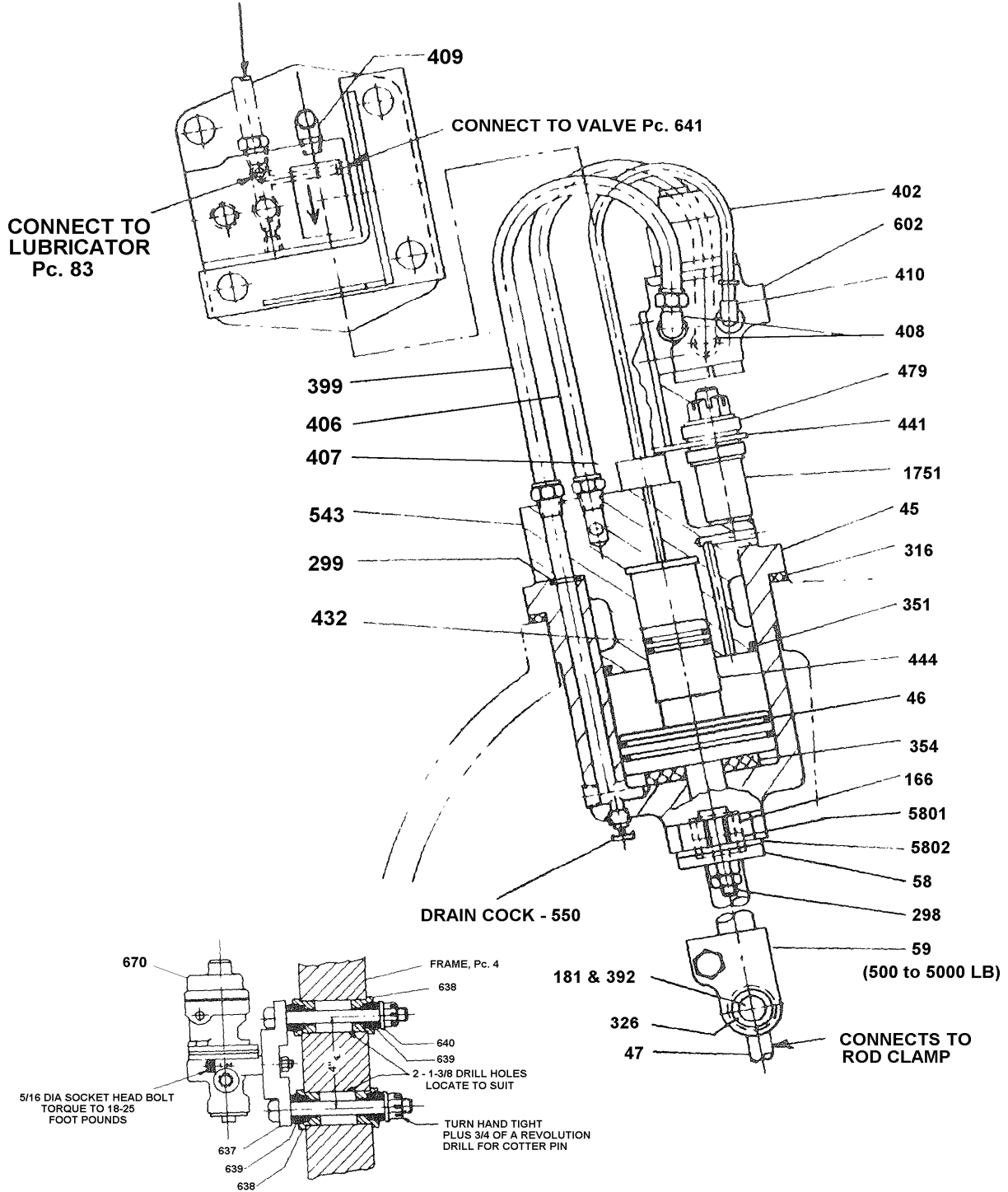
Parts used in conjunction
with Short Stroke Control

SECTION IX – CECO-DROP – LINE DRAWINGS & PARTS LISTS

ELECTRIFIED PISTON ROD CLAMP

3000 lb. and larger mfg'd. after July, 1975 and All Sizes mfg'd after January, 1978

Install Filter, Pc. 675 in control air supply line between receiver and 3 way valve.



Parts used in conjunction with Short Stroke Control