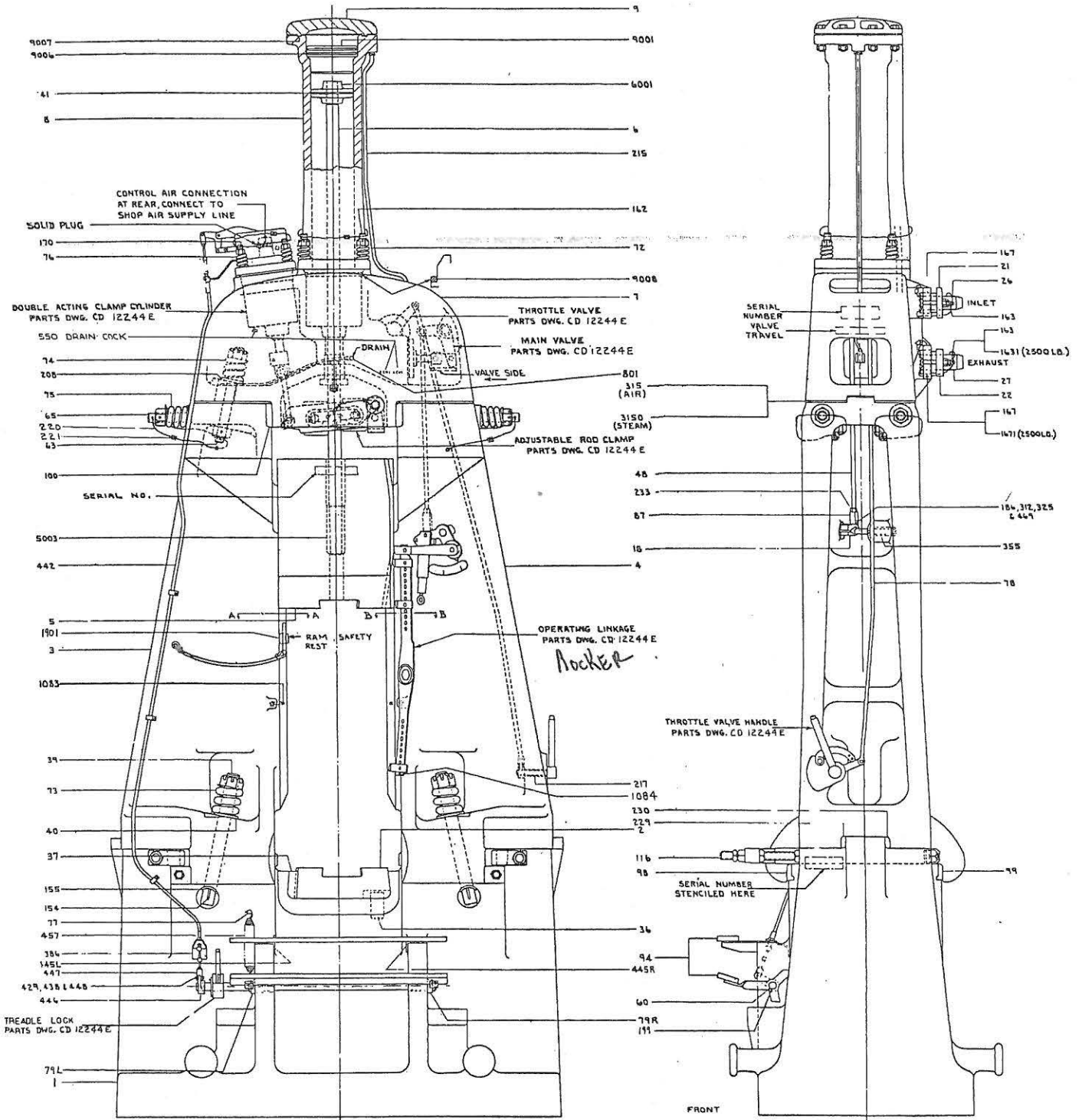


SECTION IXPARTS LISTS - GENERAL ASSEMBLY

<u>Pc. No.</u>	<u>Name</u>	<u>Pc. No.</u>	
1	Anvil	163	Gland Bolt - Inlet &
2	Anvil Cap		Exhaust (500 lb. thru
3	Frame		2000 lb.)-(2500 lb.
4	Frame		Inlet)-(3000 lb. &
5	Ram		larger)
5003	Ram Bushing	1631	Gland Bolt - Exhaust
6	Piston Rod		(2500 lb. only)
6001	Piston Head	167	Packing - Inlet &
7	Yoke		Exhaust (500 lb. thru
8	Cylinder		2000 lb.)-(2500 lb.
9	Cylinder Cover		Inlet)-(3000 lb. &
9001	Plunger		larger)
9006	Piston Ring	1671	Packing - Exhaust
9007	Gasket		(2500 lb. only)
9008	"O"Ring	170	Clamp Cylinder-to-Yoke
18	Rocker Lever		Bolt (500 lb. thru
21	Inlet Gland		5000 lb.)
22	Exhaust Gland	170	Clamp Cylinder-to-Yoke
26	Inlet Nipple		Stud (6000 lb. &
27	Exhaust Nipple		larger)
36	Stop	186	Pin
37	Key	1901	Wedge
39	Frame-to-Anvil Stud	199	Bushing
40	Washer	208	Washer
41	Piston Ring	215	Tubing
48	Valve Connection	217	Bushing
60	Treadle Shaft	220	Cable
63	Frame-to-Yoke Stud	221	Clip
65	Tie Bar	229	Wearing Plate
72	Cylinder-to-Yoke Spring	230	Wearing Plate
73	Frame-to-Anvil Spring	233	Nut
74	Frame-to-Yoke Spring	315	Pad (Air Operation)
75	Tie Bar Spring	3150	Pad (Steam Operation)
76	Clamp Cylinder to Yoke Spring	325	Washer
77	Treadle Pin	355	Bushing
78	Throttle Valve Rod	386	Valve Bracket
79L	Treadle Lever - LH	429	Pin
79R	Treadle Lever - RH	438	Washer
87	Turnbuckle	442	Push-Pull Control
94	Treadle Board	445L	Lever -LH
98	Wearing Plate	445R	Lever - RH
99	Wearing Plate	446	Treadle Arm
100	Wearing Plate	447	Cable Coupling
116	Stud (500 lb. thru 5000 lb.)	448	"O"Ring
116	Bolt (6000 lb. & larger)	457	Treadle Spring
154	Key	465	Stud (500 lb. thru 1500 lb.)
155	Washer	465	Bolt (2000 lb. & larger)
162	Cylinder-to-Yoke Bolt	469	"O"Ring
		515	Spring (500 lb. thru 1500 lb.,

SECTION IX - CECO-DROP - LINE DRAWINGS & PARTS LISTS



GENERAL ASSEMBLY

Revised 7/24/72