

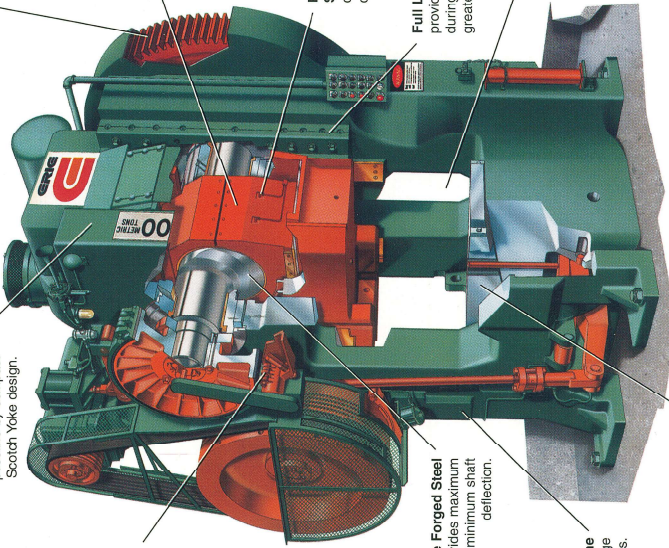
Lower Frame Height
for greater rigidity made possible by compact Scotch Yoke design.

Band-Type Brake
with 3 sections can be reversed to equalize wear.

Extra-Wide Forged Steel
Eccentric provides maximum rigidity and minimum shaft deflection.

Steel Frame
with extra-large cross-sections.

Optional Bottom Wedge



Alloy Steel Spur Gearing for easier assembly and maintenance.

Exclusive Erie Scotch Yoke provides uniform forging pressure and helps minimize deflection on off-center loading. Simplified design reduces maintenance.

Pressure Lubrication System lubricates, cools and cleans all critical working parts.

Full Length Adjustable Guides provide more stability for the ram during forging stroke and promote greater forging accuracy.

Larger Windows are readily suitable for automated forging line equipment.

Options and Accessories

Bottom Wedge
The Erie mechanical forging press is normally designed with a solid bed. Front-to-back moving wedge for shut height adjustment is available. Presses 1600 tons and over have a double wedge arrangement.

Boilers can be furnished as required.

Instrument Package for monitoring and/or recording critical press functions such as flywheel rpm, main drive motor

amperage and bearing temperatures. Alarms indicate hazardous operating conditions.

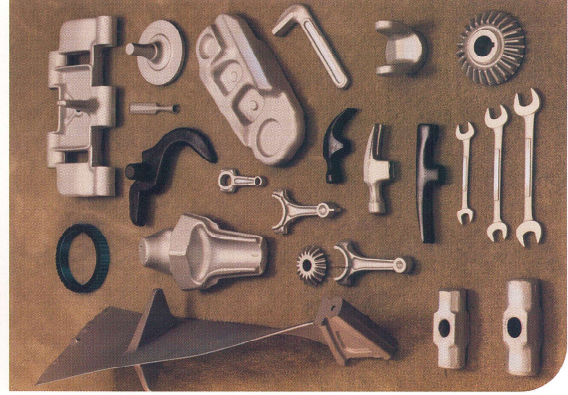
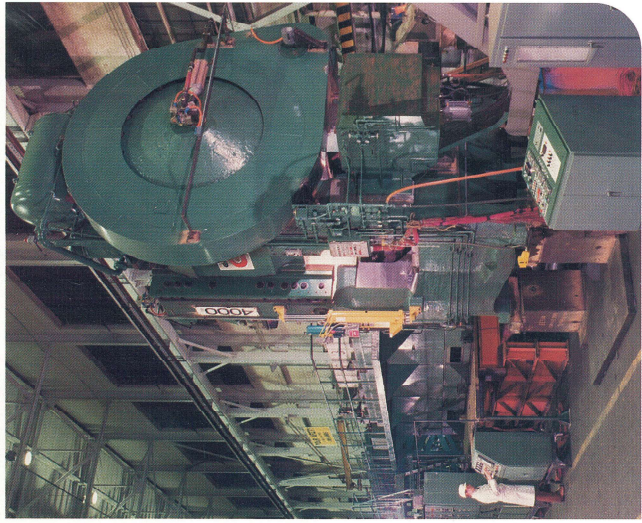
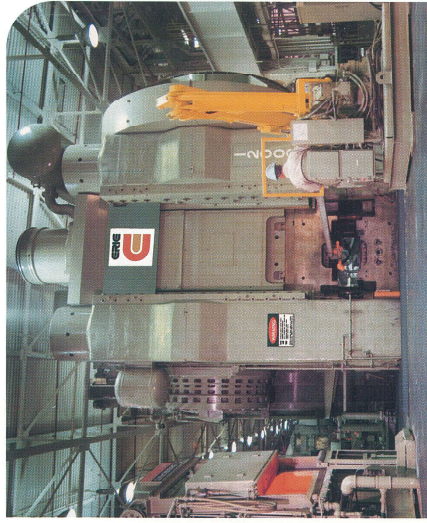
Strain Monitoring (tonnage indicating) systems are also available.

Power Wedge Adjustment. An air operated impact wrench for easy operation of wedge adjustment screw (die height adjustment) is recommended on presses of 2500 tons and larger.

Lower Knockout Time Delay holds forging out of lower die cavity for a specified time to facilitate handling.

Mechanical-Pneumatic Transfer for automatic handling of forgings through the press.

Conveyor Package for automated presses includes billet loading and feeding conveyors with reject chute, part discharge and fast removal conveyors.



PRODUCTIVITY THROUGH ADVANCED FORMING MACHINERY AND SYSTEMS.

ERIE PRESS SYSTEMS
AN ERICO COMPANY

1253 West 12th Street
Erie, Pennsylvania 16512 USA
(814) 455-3941 • FAX (814)456-4819

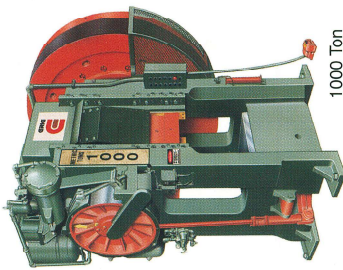


Distributors in principal U.S. cities and major foreign countries

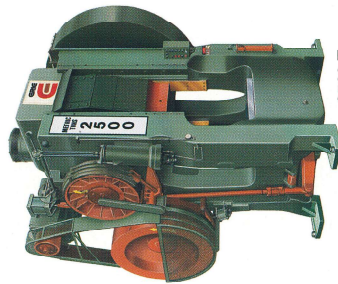
Form No. 11-101 Replaces Bulletin 507 Litho in USA #731-H

Specifications

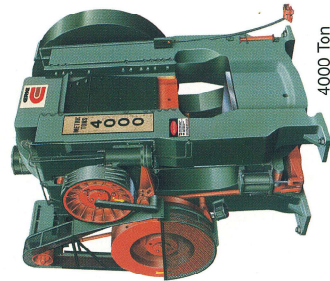
ERIC Mechanical Forging Presses



1000 Ton



2500 Ton



4000 Ton

CAPACITY - METRIC TONS	500	1000	1300	1600	2500	4000	6000	8000	12000
RATED CAPACITY - INCHES (mm)	1/4 in. (6) up	1/2 in. (3) up	1/2 in. (3) up	1/2 in. (3) up	1/2 in. (3) up	1/2 in. (3) up	3/8 in. (5) up	3/8 in. (5) up	1/2 in. (12) up
STROKE - INCHES (mm)	10 (254)	10 (254)	10 (254)	12 (305)	14 (355)	16 (406)	18 (457)	18 (457)	20 (508)
STROKES PER MINUTE	90	90	90	65	55	45	38	35	31
DIE SEAT (L-R & F-B) - INCHES (mm)	27 x 32 (685 x 813)	30 x 40 (762 x 1016)	33 3/8 x 40 (847 x 1016)	39 3/8 x 43 (1000 x 1092)	48 1/2 x 54 (1231 x 1371)	61 1/2 x 60 (1562 x 1524)	78 1/2 x 80 (1994 x 2030)	81 1/2 x 88 (2070 x 2235)	85 1/2 x 101 1/2 (2171 x 2578)
RAM FACE (L-R & F-B) - INCHES (mm)	27 x 32 (685 x 813)	30 x 3 (762 x 767)	32 x 33 (813 x 838)	38 x 40 1/2 (965 x 1028)	44 x 48 (1117 x 1219)	56 x 58 (1422 x 1394)	72 x 72 (1828 x 1828)	78 1/2 x 80 (min.) (1994 x 2032)	86 1/2 x 98 (2197 x 2489)
SHUT HEIGHT (S.D.-A.D.) - INCHES (mm) (BETWEEN RAM PLATE AND HARC PLATE)	20 (508)	24 (605)	25 (635)	30 (762)	35 (889)	40 (1016)	61 (1549)	62 (1575)	—
SHUT HEIGHT WITHOUT K.O. PLATE - INCHES (mm)	20 (508)	28 (711)	29 (736)	34 1/2 (876)	40 (1016)	45 (1143)	67 1/2 (1714)	69 1/2 (1765)	30 (2032)
UPPER K.O. STROKE - INCHES (mm) MAX.	1 (25)	5/8 (15)	5/8 (15)	1 1/4 (31)	1 1/4 (31)	1 1/4 (31)	1 1/4 (31)	1 1/4 (31)	—
*LOWER K.O. STROKE, MANUAL FEED - INCHES (mm) (Automated Press Knockout Stroke, Consult factory)	1 1/2 (38)	1 1/2 (38)	1 1/2 (38)	1 3/4 (38)	1 3/4 (38)	1 3/4 (38)	1 3/4 (38)	1 3/4 (38)	**4 (101)
MOTOR HP (KW) RATING	50 (37)	75 (56)	100 (75)	100 (75)	150 (112)	250 (186)	500 (375)	600 (448)	2 @ 500 (373)
WIDTH OF ECCENTRIC - INCHES (mm)	16 (406)	16 1/2 (412)	18 1/2 (463)	20 1/2 (520)	24 1/2 (616)	32 1/2 (819)	43 (1092)	48 (1219)	51 1/2 (1308)
FLOOR SPACE L-R & F-B FEET/INCHES (mm)	8'6" x 7'7" (2590 x 2311)	7'4" x 9'3" (2235 x 2846)	8'1" x 10'1" (2463 x 3073)	9'10" x 10'6" (2997 x 3200)	12' x 12' (3660 x 3660)	14' x 14' (4978 x 4978)	21'0" x 18'3" (6400 x 5560)	24'6" x 20' (7498 x 6096)	25' x 22'11" (7620 x 6865)
HEIGHT ABOVE FLOOR- FEET/INCHES (mm)	13'3" (4038)	11'3" (3429)	11'6" (3505)	13'9" (4191)	15'5" (4700)	19' (5791)	23'6" (7163)	26'6" (8077)	28'9" (8763)
DISTANCE BELOW FLOOR- FEET/INCHES (mm)	12" (305)	—	—	1'3 1/2" (383)	2'4" (711)	3'3" (990)	12'0" (3658)	14' (4267)	10'7" (3225)
APPROXIMATE WEIGHT - POUNDS (MT)	57,000 (25)	90,000 (40)	124,000 (56)	188,000 (85)	280,000 (127)	460,000 (208)	1,185,000 (540)	1,500,000 (680)	2,750,000 (1247)

* Pivoting Lever Type (Center Pin) Available on Some Models † Rotary Shaft Type

**Hydraulic

Specifications vary with application.

Note: Specifications subject to change without notice.