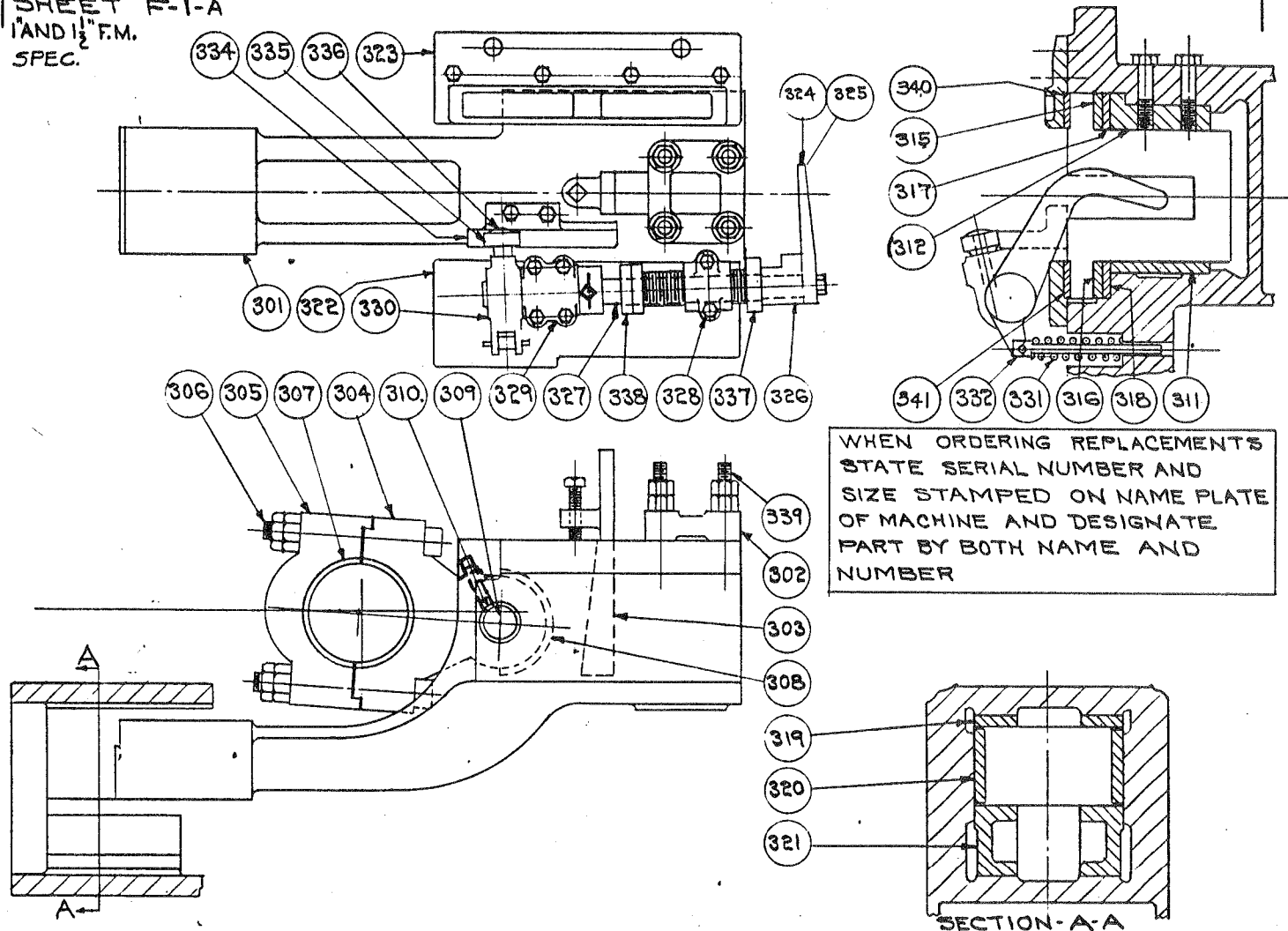


HEADERSLIDE PARTS LIST



SHEET F-1-A
 1" AND 1/2" F.M.
 SPEC.



WHEN ORDERING REPLACEMENTS
 STATE SERIAL NUMBER AND
 SIZE STAMPED ON NAME PLATE
 OF MACHINE AND DESIGNATE
 PART BY BOTH NAME AND
 NUMBER

- 301 HEADER SLIDE
- 302 TOOLHOLDER CLAMP
- 303 TOOLHOLDER WEDGE
- 304 PITMAN
- 305 PITMAN CAP
- 306 PITMAN BOLTS
- 307 PITMAN AND CRANKSHAFT BUSHING
- 308 PITMAN THRUST BUSHING
- 309 PITMAN WRIST PIN
- 310 PITMAN WRIST PIN BUSHINGS
- 311 HEADER SLIDE STATIONARY SIDE LINER
- 312 HEADER SLIDE ADJUSTING SIDE LINER

- 315 HEADER SLIDE RIGHT HAND LIP LINER
- 316 HEADER SLIDE LEFT HAND LIP LINER
- 317 BED LINER FOR HEADER SLIDE RIGHT LIP
- 318 BED LINER FOR HEADER SLIDE LEFT LIP
- 319 HEADER SLIDE EXTENSION TOP LINERS
- 320 HEADER SLIDE EXTENSION SIDE LINERS
- 321 HEADER SLIDE EXTENSION BOTTOM LINERS
- 322 HEADER SLIDE LEFT HAND COVER PLATE
- 323 HEADER SLIDE RIGHT HAND COVER PLATE

- 324 STOCK GAUGE- STRAIGHT
- 325 STOCK GAUGE- OFFSET
- 326 STOCK GAUGE HEAD
- 327 STOCK GAUGE SHAFT
- 328 STOCK GAUGE SHAFT BR'G. CAP-FRONT
- 329 STOCK GAUGE SHAFT BR'G. CAP-REAR
- 330 STOCK GAUGE SLEEVE
- 331 STOCK GAUGE SPRING
- 332 STOCK GAUGE SPRING ROD
- 334 STOCK GAUGE CAM
- 335 STOCK GAUGE CAM ROLLER WITH BUSH.
- 336 STOCK GAUGE CAM ROLLER PIN
- 337 STOCK GAUGE ADJUSTING SLEEVE
- 338 STOCK GAUGE SHAFT COLLAR
- 339 TOOLHOLDER CLAMP STUDS
- 340 HEADER SLIDE LIP TOP LINER - R.H.
- 341 HEADER SLIDE LIP TOP LINER - L.H.

THE AJAX MANUFACTURING CO.
 CLEVELAND 17, OHIO