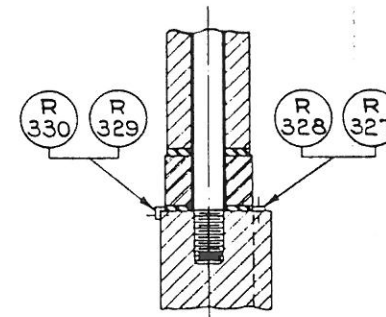
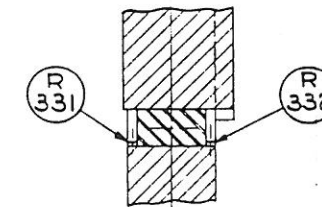


- | | |
|--|---|
| R 264 BEARING BLOCK HOLDUP STUD-L.H. | R 315 SPRING WASHER-R.H. |
| R 268 BEARING BLOCK HOLDUP STUD-R.H. | R 316 SPRING WASHER-L.H. |
| R 300 SPEED REDUCER-R.H. | R 319 LIMIT SWITCH |
| R 301 SPEED REDUCER-L.H. | R 320 STOP BRACKET |
| R 302 COUPLING & PULLEY | R 321 WEDGE OPERATING SCREWS |
| R 303 COUPLING | R 322 THRUST WASHERS |
| R 304 MOUNTING PLATE-R.H. | R 323 HOUSING WEAR PLATE-R.H. |
| R 305 MOUNTING PLATE-L.H. | R 324 HOUSING WEAR PLATE-L.H. |
| R 306 CONNECTING SHAFT | R 325 BEARING BLOCK WEAR PLATE-R.H. |
| R 307 MOTOR BRACKET | R 326 BEARING BLOCK WEAR PLATE-L.H. |
| R 308 DRIVE MOTOR | R 327 TOP WEDGE GUIDE-R.H. OUTSIDE |
| R 309 MOTOR PULLEY | R 328 TOP WEDGE GUIDE-L.H. OUTSIDE |
| R 310 "V" BELT | R 329 TOP WEDGE GUIDE-R.H. INSIDE |
| R 311 SPRING COVER-R.H. | R 330 TOP WEDGE GUIDE-L.H. INSIDE |
| R 312 SPRING COVER-L.H. | R 331 BOTTOM WEDGE GUIDE-R.H. INSIDE |
| R 313 BEARING BLOCK HOLDUP SPRING-R.H. | R 332 BOTTOM WEDGE GUIDE-R.H. OUTSIDE |
| R 314 BEARING BLOCK HOLDUP SPRING-L.H. | R 333 AIR CYLINDER |
| | R 334 WEDGE OPERATING ROD |
| | R 335 TOP ROLL SHAFT BOTTOM LOCKING WEDGE |
| | R 336 ROLL ADJUSTMENT SCALE |

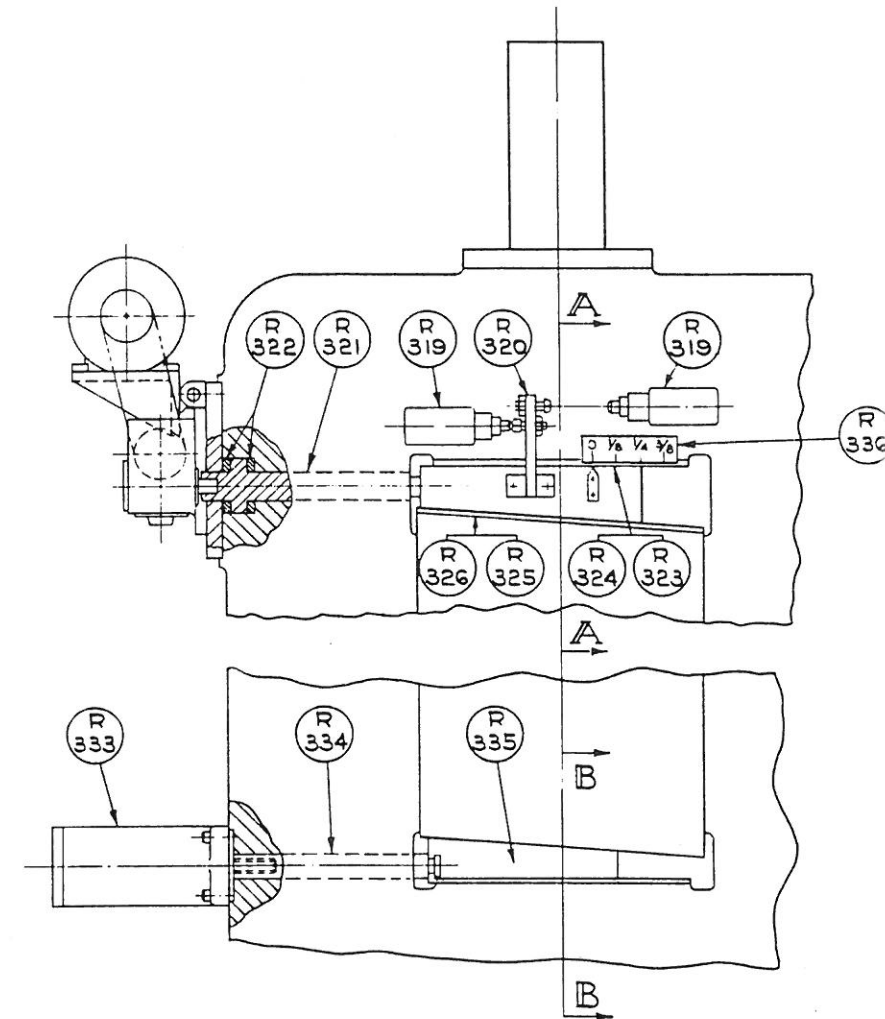
WHEN ORDERING REPLACEMENTS
STATE SERIAL NUMBER AND
SIZE STAMPED ON NAME PLATE
OF MACHINE AND DESIGNATE PART
BY BOTH NAME AND NUMBER



SECTION A-A



SECTION B-B



PROCEDURE FOR ADJUSTING TOP ROLL SHAFT

PLACE SELECTOR HANDLE TO "ADJUST" POSITION. WHEN LOCKING WEDGE-R-335 HAS FULLY RETRACTED, MAKE ADJUSTMENT BY DEPRESSING EITHER "UP" OR "DOWN" MOTOR CONTROL BUTTON AND HOLD UNTIL DESIRED POSITION IS REACHED AS INDICATED ON SCALE-R-336. TURN SELECTOR HANDLE TO "RUN" POSITION; THIS CAUSES LOCKING WEDGE TO ADVANCE UNTIL IT IS TIGHT AGAINST BEARING BLOCK.