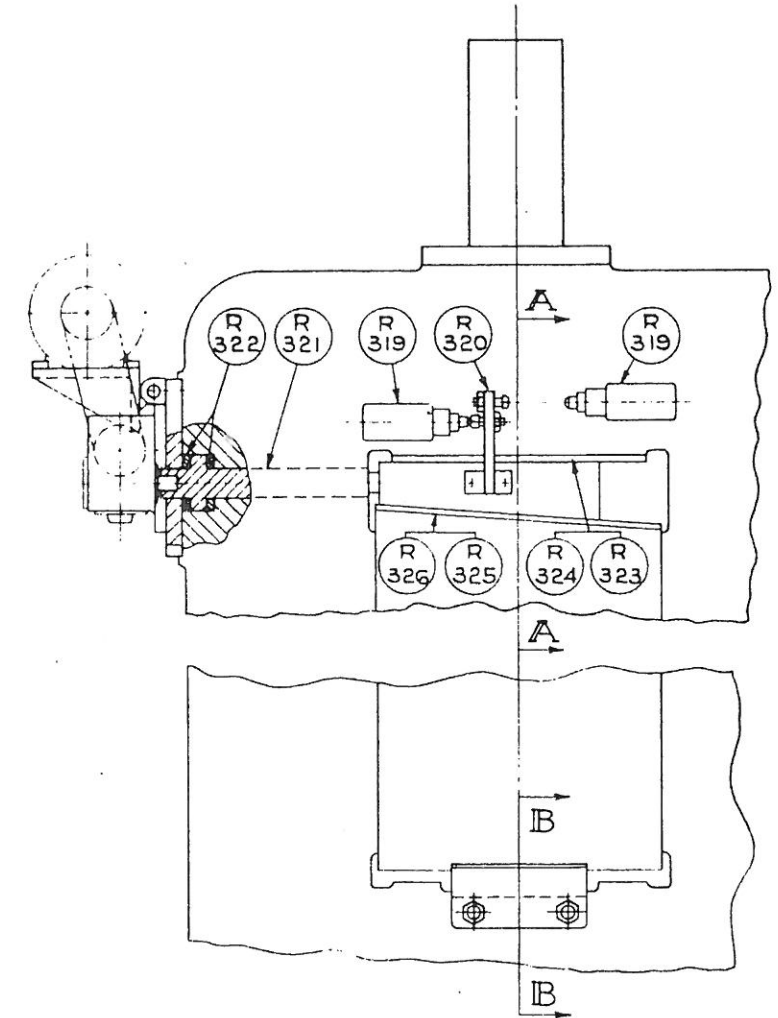
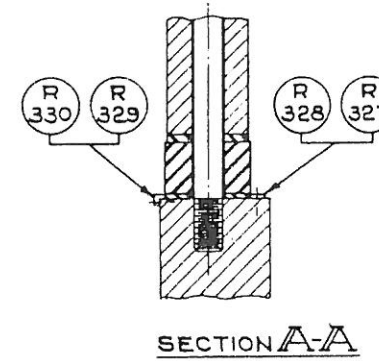


R 264 BEARING BLOCK HOLDUP STUD - L.H.
R 268 BEARING BLOCK HOLDUP STUD - R.H.
R 300 SPEED REDUCER - R.H.
R 301 SPEED REDUCER - L.H.
R 302 COUPLING & PULLEY
R 303 COUPLING
R 304 MOUNTING PLATE - R.H.
R 305 MOUNTING PLATE - L.H.
R 306 CONNECTING SHAFT
R 307 MOTOR BRACKET
R 308 DRIVE MOTOR
R 309 MOTOR PULLEY
R 310 "V" BELT
R 311 SPRING COVER - R.H.
R 312 SPRING COVER - L.H.
R 313 BEARING BLOCK HOLDUP SPRING - R.H.
R 314 BEARING BLOCK HOLDUP SPRING - L.H.

R 315 SPRING WASHER - R.H.
R 316 SPRING WASHER - L.H.
R 317 R.H. BEARING BLOCK BOTTOM WEDGE
R 318 WEDGE STUDS
R 319 LIMIT SWITCH
R 320 STOP BRACKET
R 321 WEDGE OPERATING SCREWS
R 322 THRUST WASHERS
R 323 HOUSING WEAR PLATE - R.H.
R 324 HOUSING WEAR PLATE - L.H.
R 325 BEARING BLOCK WEAR PLATE - R.H.
R 326 BEARING BLOCK WEAR PLATE - L.H.
R 327 TOP WEDGE GUIDE - R.H. OUTSIDE
R 328 TOP WEDGE GUIDE - L.H. OUTSIDE
R 329 TOP WEDGE GUIDE - R.H. INSIDE
R 330 TOP WEDGE GUIDE - L.H. INSIDE

WHEN ORDERING REPLACEMENTS
STATE SERIAL NUMBER AND
SIZE STAMPED ON NAME PLATE
OF MACHINE AND DESIGNATE PART
BY BOTH NAME AND NUMBER



PROCEDURE FOR ADJUSTING TOP ROLL SHAFT

TO ADJUST UPWARD - PUSH THE "UP" MOTOR CONTROL BUTTON AND HOLD UNTIL DESIRED POSITION IS REACHED, THEN RELEASE BUTTON AND MANUALLY ADVANCE LOCKING WEDGE - R 317 SO IT IS TIGHT AGAINST BOTTOM OF THE BEARING BLOCK.

TO ADJUST DOWNWARD - FIRST RELEASE BOTTOM LOCKING WEDGE AND BACK-OFF, THEN DEPRESS "DOWN" BUTTON AND HOLD UNTIL DESIRED POSITION IS REACHED. LOCKING WEDGE IS THEN ADVANCED UNTIL IT IS TIGHT AGAINST BEARING BLOCK. IF THE LOCKING WEDGE IS NOT RETRACTED ENOUGH TO MAKE THE ADJUSTMENT, THE BEARING BLOCK WILL HIT WEDGE AND STALL DRIVE MOTOR. IT WOULD THEN BE NECESSARY TO REPEAT THE PROCEDURE TO REACH DESIRED POSITION.

THE MAXIMUM "UP" OR "DOWN" POSITION OF TOP ROLL SHAFT IS RESTRICTED BY LIMIT SWITCHES WHICH CUT OUT DRIVE MOTOR WHEN EXTREMES ARE REACHED.