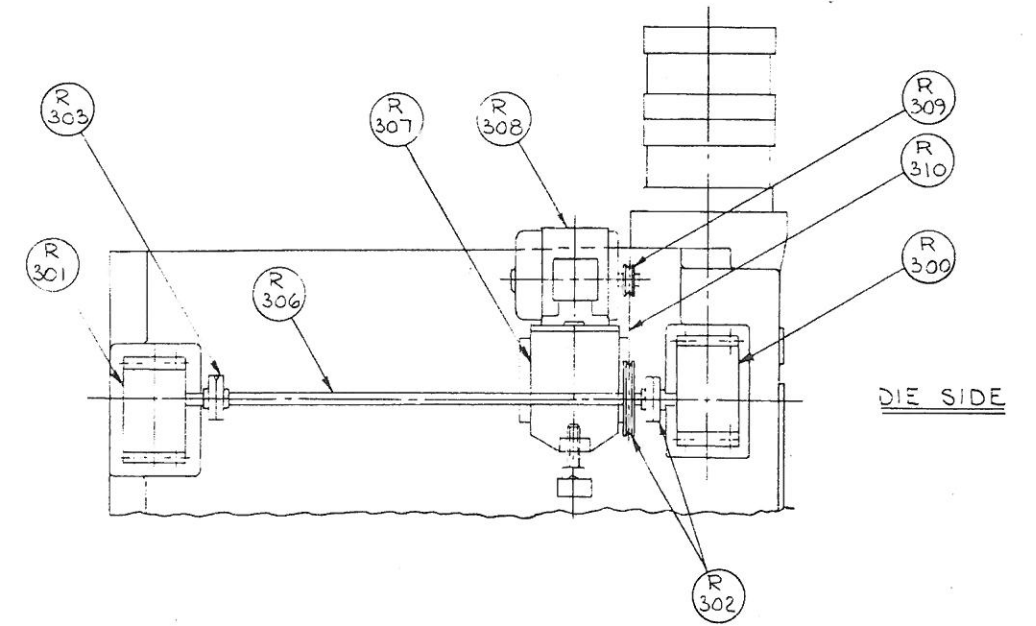
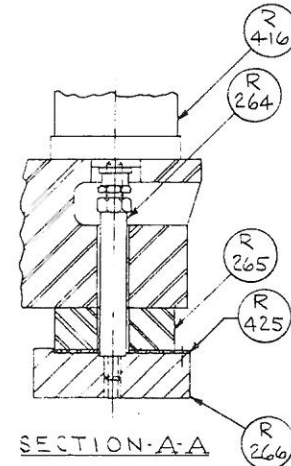


WHEN ORDERING REPLACEMENTS, STATE SERIAL NUMBER AND SIZE STAMPED ON NAME PLATE OF MACHINE AND DESIGNATE PART BY BOTH NAME AND NUMBER.



NOTE:  
FOR TOP ROLL SHAFT ADJUSTMENT PROCEDURES, SEE ROLL OPERATING PROCEDURES.

- |                                      |  |
|--------------------------------------|--|
| R-264 BEARING BLOCK HOLDUP STUD-R.H. | R-321 WEDGE OPERATING SCREWS-R.H.#L.H.         |
| R-265 ADJUSTING WEDGE-R.H.           | R-333 AIR CYLINDERS-R.H.#L.H.                  |
| R-266 BEARING BLOCK-R.H.             | R-334 WEDGE OPERATING RODS-R.H.#L.H.           |
| R-269 ADJUSTING WEDGE-L.H.           | R-335 BOTTOM LOCKING WEDGES-R.H.#L.H.          |
| R-270 BEARING BLOCK-L.H.             | R-416 BALANCE CYLINDER.                        |
| R-300 SPEED REDUCER-R.H.             | R-417 LIMIT SWITCH TRIPPERS.                   |
| R-301 SPEED REDUCER-L.H.             | R-418 ADJUSTING WEDGE SHIM-L.H.                |
| R-302 COUPLING & PULLEY.             | R-419 LOCKNUT.                                 |
| R-303 COUPLING.                      | R-420 WEDGE OPERATING SCREW BEARINGS-R.H.#L.H. |
| R-306 CONNECTING SHAFT.              | R-421 BEARING RETAINER COLLARS-R.H.#L.H.       |
| R-307 MOTOR BRACKET.                 | R-422 PULL ROD LIMIT SWITCH.                   |
| R-308 DRIVE MOTOR.                   | R-423 PULL ROD LIMIT SWITCH BRACKET.           |
| R-309 MOTOR PULLEY.                  | R-424 PULL ROD LIMIT SWITCH ACTUATOR.          |
| R-310 "V" BELT.                      | R-425 ADJUSTING WEDGE SHIM-R.H.                |
| R-319 LIMIT SWITCH.                  |  |