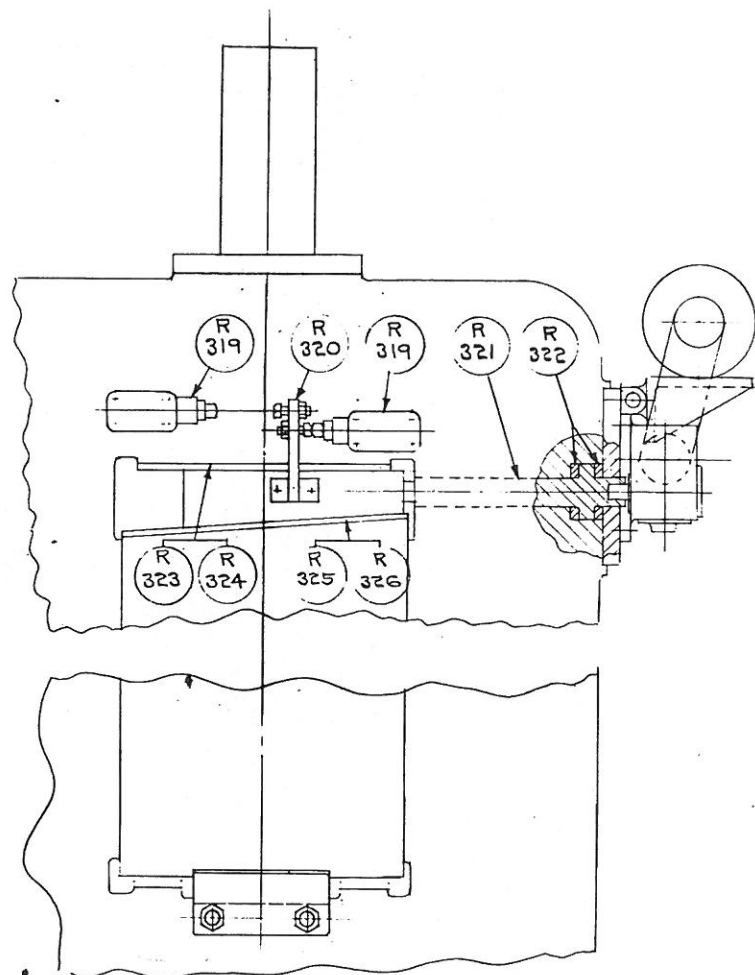


AJAX

SHEET NO FR-12

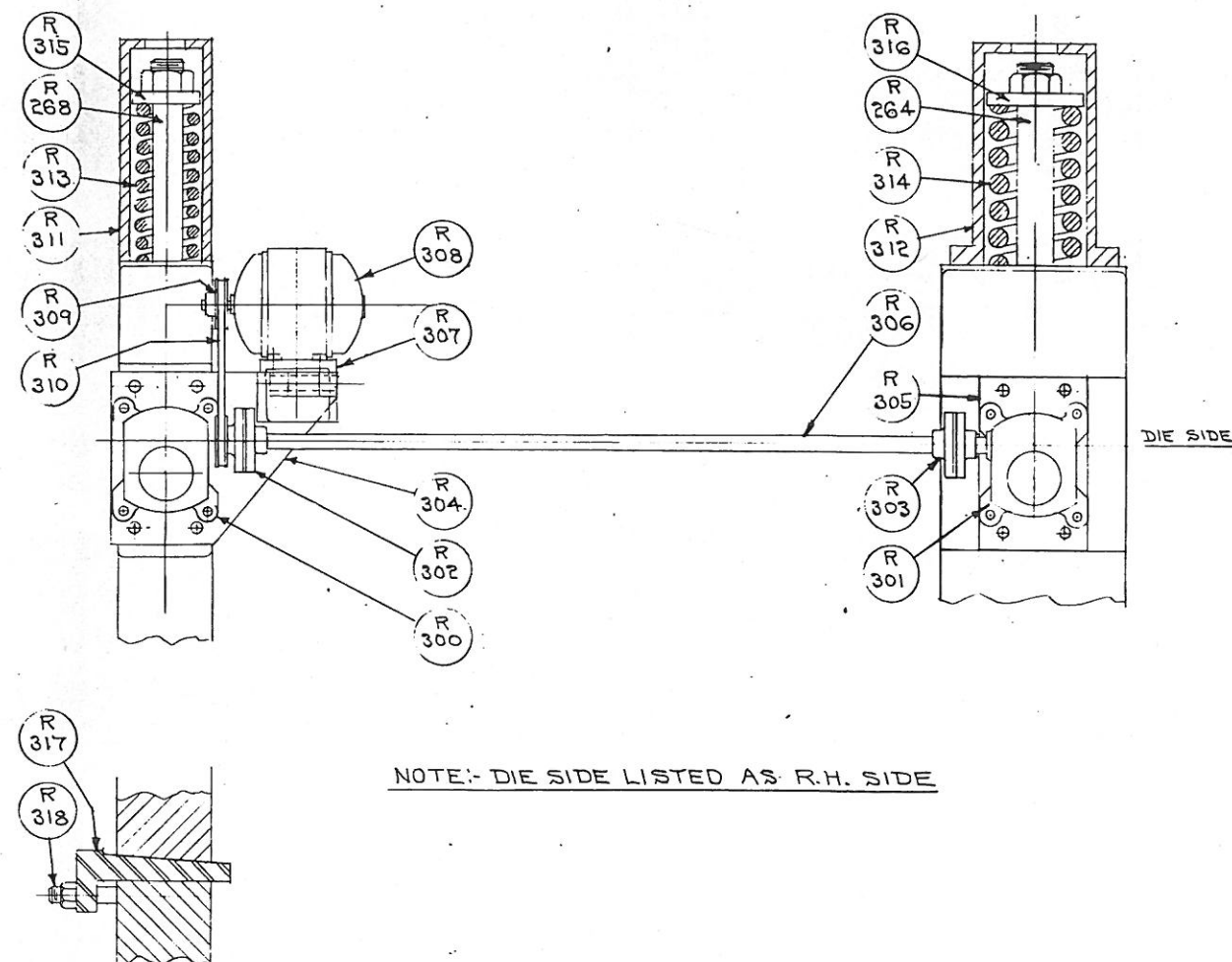


WHEN ORDERING REPLACEMENTS
STATE SERIAL NUMBER AND
SIZE STAMPED ON NAME PLATE
OF MACHINE AND DESIGNATE PART
BY BOTH NAME AND NUMBER

- | | |
|--|--|
| R 264 BEARING BLOCK HOLDUP STUD- R.H. | R 314 BEARING BLOCK HOLDUP SPRING-R.H. |
| R 268 BEARING BLOCK HOLDUP STUD- L.H. | R 315 SPRING WASHER- L.H. |
| R 300 SPEED REDUCER- L.H. | R 316 SPRING WASHER- R.H. |
| R 301 SPEED REDUCER- R.H. | R 317 L.H. BEARING BLOCK BOTTOM WEDGE |
| R 302 COUPLING & PULLEY | R 318 WEDGE STUDS |
| R 303 COUPLING | R 319 LIMIT SWITCH |
| R 304 MOUNTING PLATE- L.H. | R 320 STOP BRACKET |
| R 305 MOUNTING PLATE- R.H. | R 321 WEDGE OPERATING SCREWS |
| R 306 CONNECTING SHAFT | R 322 THRUST WASHERS |
| R 307 MOTOR BRACKET | R 323 HOUSING WEAR PLATE- R.H. |
| R 308 DRIVE MOTOR | R 324 HOUSING WEAR PLATE- L.H. |
| R 309 MOTOR PULLEY | R 325 BEARING BLOCK WEAR PLATE- R.H. |
| R 310 V BELT | R 326 BEARING BLOCK WEAR PLATE- L.H. |
| R 311 SPRING COVER- L.H. | |
| R 312 SPRING COVER- R.H. | |
| R 313 BEARING BLOCK HOLDUP SPRING L.H. | |

THE AJAX MANUFACTURING CO.
CLEVELAND 17, OHIO.

AJAX



NOTE:- DIE SIDE LISTED AS R.H. SIDE

PROCEDURE FOR ADJUSTING TOP ROLL SHAFT

TO ADJUST UPWARD - PUSH THE "UP" MOTOR CONTROL BUTTON AND HOLD UNTIL DESIRED POSITION IS REACHED, THEN RELEASE BUTTON AND MANUALLY ADVANCE LOCKING WEDGE-R 317 SO IT IS TIGHT AGAINST BOTTOM OF THE BEARING BLOCK.

TO ADJUST DOWNWARD - FIRST RELEASE BOTTOM LOCKING WEDGE AND BACK-OFF, THEN DEPRESS "DOWN" BUTTON AND HOLD UNTIL DESIRED POSITION IS REACHED. LOCKING WEDGE IS THEN ADVANCED UNTIL IT IS TIGHT AGAINST BEARING BLOCK. IF THE LOCKING WEDGE IS NOT RETRACTED ENOUGH TO MAKE THE ADJUSTMENT, THE BEARING BLOCK WILL HIT WEDGE AND STALL DRIVE MOTOR. IT WOULD THEN BE NECESSARY TO REPEAT THE PROCEDURE TO REACH DESIRED POSITION.

THE MAXIMUM "UP" OR "DOWN" POSITION OF TOP ROLL SHAFT IS RESTRICTED BY LIMIT SWITCHES WHICH CUT OUT DRIVE MOTOR WHEN EXTREMES ARE REACHED.

THE AJAX MANUFACTURING CO.
CLEVELAND 17, OHIO.