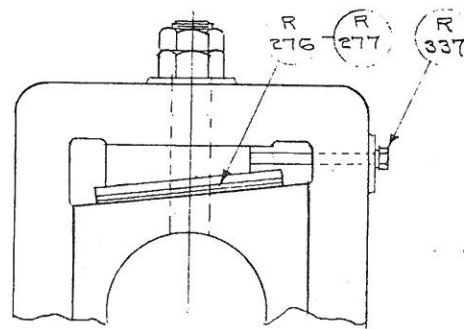
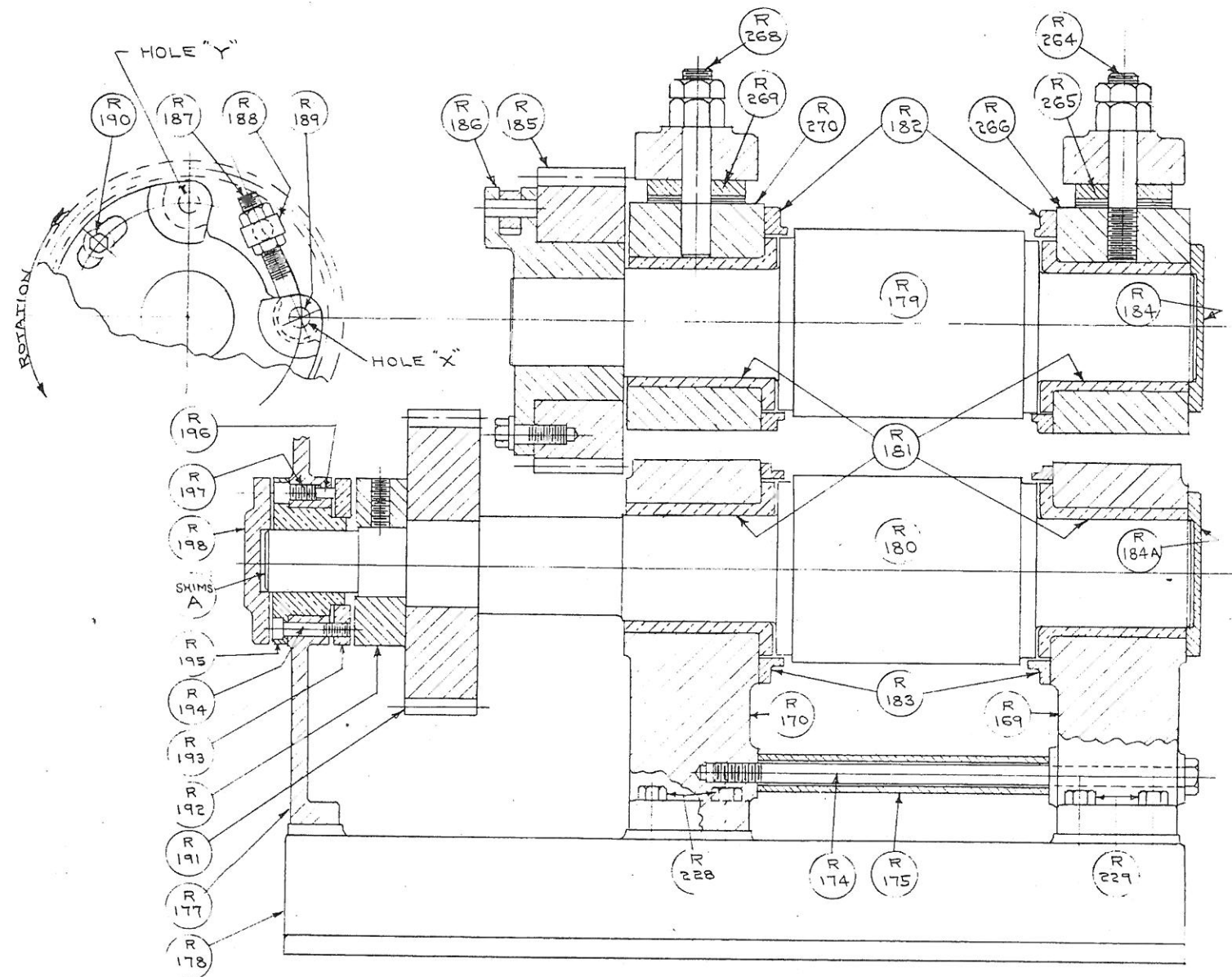


DIRECTION OF ROTATION

STANDARD ROLLS ARE FURNISHED TO OPERATE IN DIRECTION SHOWN BY ARROW, IF IT IS MORE CONVENIENT TO OPERATE ROLL IN OPPOSITE DIRECTION, SHIFT EYE BOLT R-187 AND EYE BOLT PIN R-189 FROM HOLE 'X' TO HOLE 'Y' IN SLEEVE R-186 TO KEEP EYE BOLT IN TENSION WHEN UNDER WORKING LOAD



- |  |  |
|--|--|
| R 169 ROLL HOUSING-R.H.                        | R 191 BOTTOM ROLL SHAFT GEAR                         |
| R 170 ROLL HOUSING-L.H.                        | R 192 BOTTOM ROLL SHAFT SPACER COLLAR                |
| R 174 ROLL HOUSING TIE ROD                     | R 193 BOTTOM ROLL SHAFT THRUST RING                  |
| R 175 ROLL HOUSING SPACER                      | R 194 BOTTOM ROLL SHAFT THRUST RING HOLD BACK SCREW  |
| R 177 GEAR HOUSING                             | R 195 GEAR HOUSING BUSHING                           |
| R 178 BASE PLATE                               | R 196 BOTTOM ROLL SHAFT ADJUSTING FLUG               |
| R 179 TOP ROLL SHAFT                           | R 197 BOTTOM ROLL SHAFT ADJUSTING FLUG SET SCREW     |
| R 180 BOTTOM ROLL SHAFT                        | R 198 BOTTOM ROLL SHAFT END RETAINER COLLAR          |
| R 181 ROLL HOUSING FLANGED BUSHING             | R 228 L.H. HSG. HOLD DOWN SCREWS (STD. CAP SCREW)    |
| R 182 TOP ROLL SHAFT BRG. BLOCK END PLATE      | R 229 R.H. HSG. HOLD DOWN SCREWS (SPECIAL CAP SCREW) |
| R 183 BOTTOM ROLL SHAFT BRG SHIELD RING        | R 264 BEARING BLOCK HOLD UP STUD (R.H.)              |
| R 184 TOP ROLL SHAFT END COVER                 | R 265 ADJUSTING WEDGE (R.H.)                         |
| R 184A BOTTOM ROLL SHAFT END COVER             | R 266 BEARING BLOCK (R.H.)                           |
| R 185 TOP ROLL SHAFT GEAR                      | R 268 BEARING BLOCK HOLD UP STUD (L.H.)              |
| R 186 TOP ROLL ADJUSTING SLEEVE                | R 269 ADJUSTING WEDGE (L.H.)                         |
| R 187 TOP ROLL ADJUSTING SLEEVE EYE BOLT       | R 270 BEARING BLOCK (L.H.)                           |
| R 188 TOP ROLL ADJUSTING SLEEVE POPPET         | R 276 SHIMS-(R.H.) COMPLETE SET                      |
| R 189 TOP ROLL ADJUSTING SLEEVE EYE BOLT PIN   | R 277 SHIMS (L.H.) COMPLETE SET                      |
| R 190 TOP ROLL ADJUSTING SLEEVE SCREW & WASHER | R 337 WEDGE ADJUSTING SCREW                          |

WHEN ORDERING REPLACEMENTS, STATE SERIAL NUMBER AND SIZE STAMPED ON NAME PLATE OF MACHINE AND DESIGNATE PART BY BOTH NAME AND NUMBER