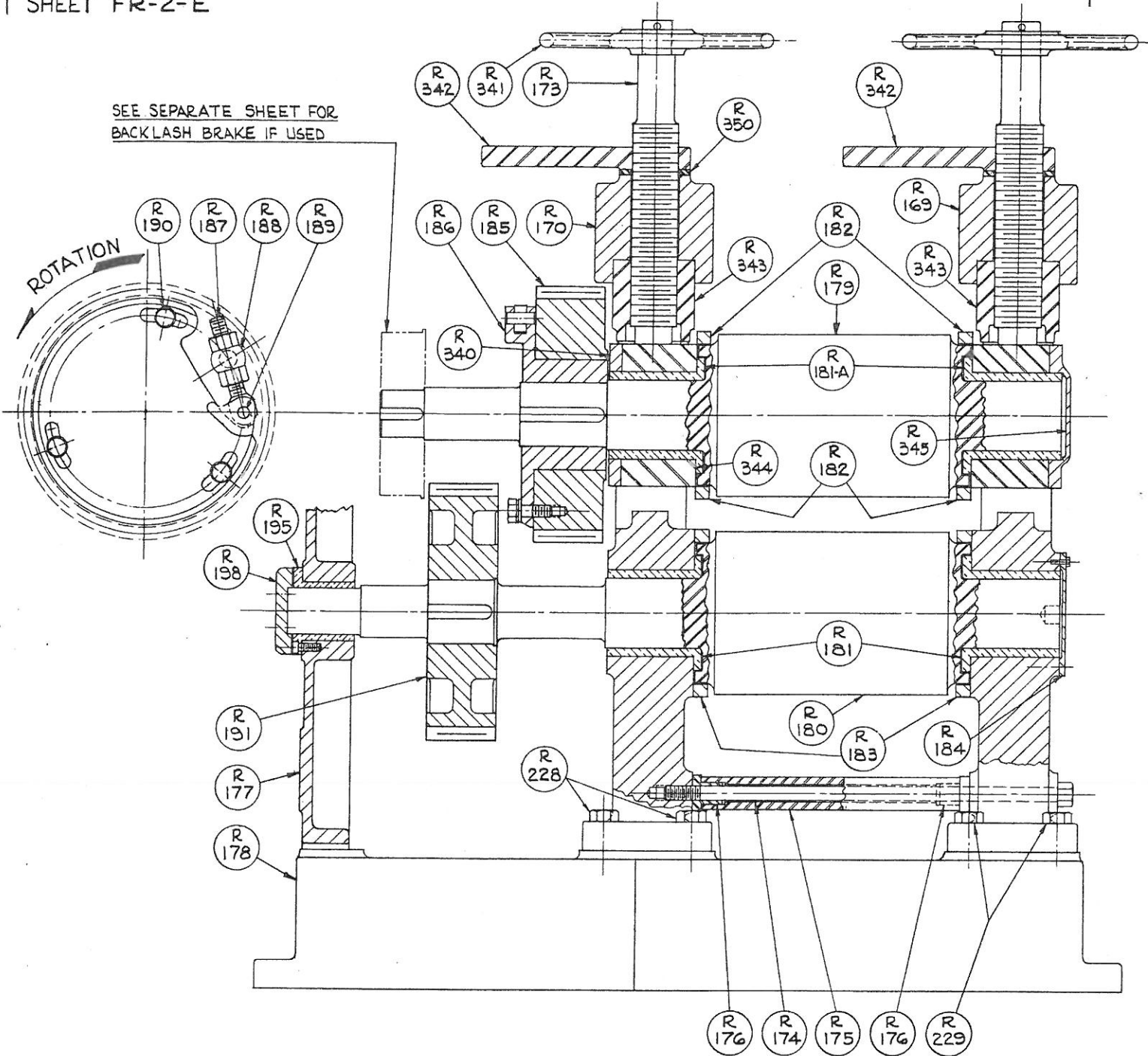
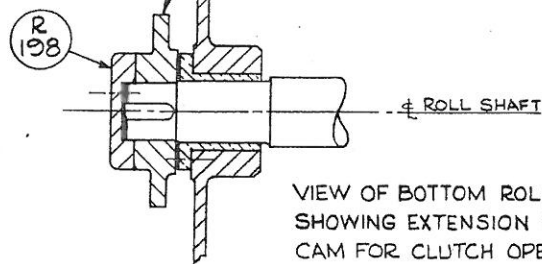


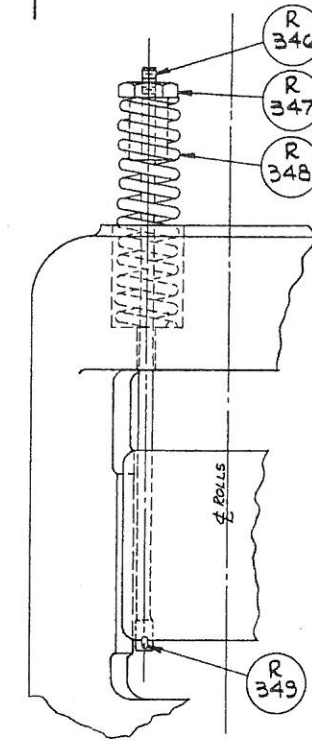
SEE SEPARATE SHEET FOR
BACKLASH BRAKE IF USED



SEE TIMER SHEET FOR CAM



VIEW OF BOTTOM ROLL SHAFT
SHOWING EXTENSION FOR TIMER
CAM FOR CLUTCH OPERATED ROLLS



ADJUSTMENT

TOP SHAFT MAY BE ADJUSTED VERTICALLY WITH HANDWHEELS ON STUDS R-173
BE CERTAIN TO TIGHTEN LOCK NUTS AFTER ADJUSTING.

TO TAKE UP WEAR IN FLANGES OF BUSHINGS, LOOSEN CAP SCREWS R-229
AND REMOVE TIE RODS R-174. MACHINE EQUAL AMOUNTS OFF END OF
SPACER SLEEVES R-176 TO PROVIDE $\frac{1}{32}$ TOTAL SIDE CLEARANCE AT TOP
ROLL SHAFT R-179. WHEN TIE RODS R-174 ARE REASSEMBLED, ROLL
HOUSING R-169 WILL BE SHIFTED TO THE LEFT GIVING PROPER
CLEARANCE.

- | | | | |
|---------|-----------------------------------|-------|----------------------------------------------|
| R-169 | ROLL HOUSING -R.H. | R-188 | TOP ROLL ADJ. SLEEVE POPPET |
| R-170 | ROLL HOUSING-L.H. | R-189 | TOP ROLL ADJ. SLEEVE EYEBOLT PIN |
| R-173 | UPPER BRG. ADJ. SCR. | R-190 | TOP ROLL ADJ. SLEEVE SCR. & WASHER |
| R-174 | ROLL HOUSING TIE RODS | R-191 | BOTTOM ROLL SHAFT GEAR |
| R-175 | ROLL HOUSING SPACER | R-195 | GEAR HOUSING BUSH. |
| R-176 | ROLL HOUSING SPACER SLEEVES | R-198 | BOTTOM ROLL SHAFT END CAP |
| R-177 | GEAR HOUSING | R-228 | L.H. HSG. HOLD DOWN SCRS. (STD CAP SCR.) |
| R-178 | BASE PLATE | R-229 | R.H. HSG. HOLD DOWN SCRS. (SPECIAL CAP SCR.) |
| R-179 | TOP ROLL SHAFT | R-340 | BRG. BLOCK END PLATE FOR L.H. HSG. |
| R-180 | BOTTOM ROLL SHAFT | R-341 | UPPER BRG. ADJ. SCR. HAND WHEEL |
| R-181 | BOTT.ROLL SHAFT FLANGED BUSH. | R-342 | UPPER BRG. ADJ. SCR. LOCKNUT |
| R-181-A | TOP ROLL SHAFT FLANGED BUSH. | R-343 | UPPER BRG. ADJ. SCR. HSG. NUTS |
| R-182 | TOP ROLL SHAFT BUSH. SHIELD RING | R-344 | UPPER ROLL SHAFT BRG. BLOCKS |
| R-183 | BOTT.ROLL SHAFT BUSH. SHIELD RING | R-345 | BRG. BLOCK END PLATE FOR R.H. HSG. |
| R-184 | ROLL SHAFT END COVER | R-346 | UPPER BRG. SPRING ROD |
| R-185 | TOP ROLL SHAFT GEAR | R-347 | UPPER BRG. SRING ROD NUT |
| R-186 | TOP ROLL ADJ. SLEEVE | R-348 | SPRING FOR UPPER BRG. |
| R-187 | TOP ROLL ADJ. SLEEVE EYEBOLT | R-349 | UPPER BRG. SPRING ROD LOCK KEY |
| | | R-350 | LOCK NUT BRG. PLATE |

WHEN ORDERING REPLACEMENTS, STATE SERIAL NUMBER
AND SIZE STAMPED ON NAME PLATE OF MACHINE AND
DESIGNATE PART BY BOTH NAME AND NUMBER