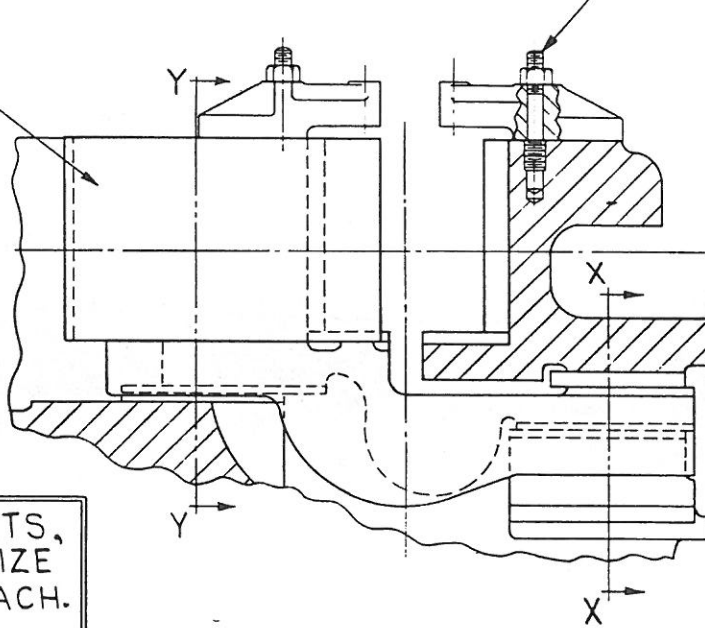
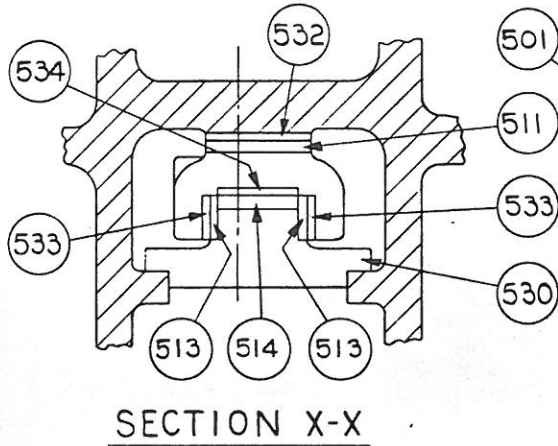
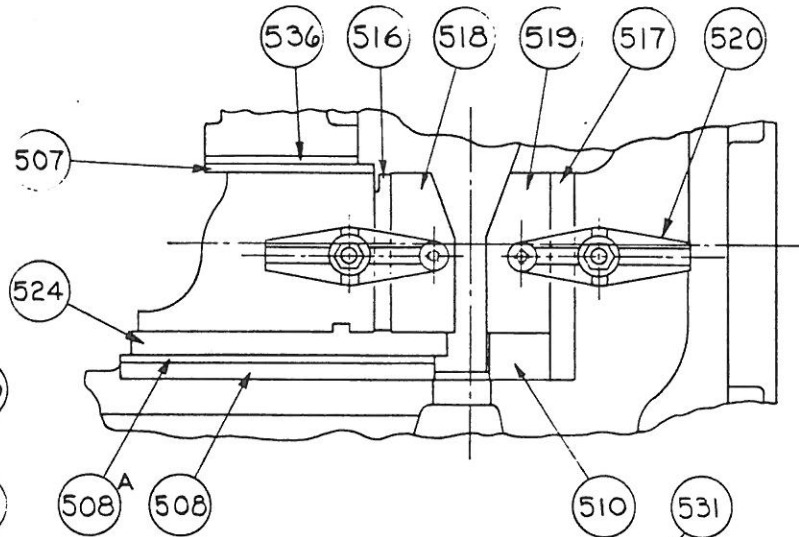
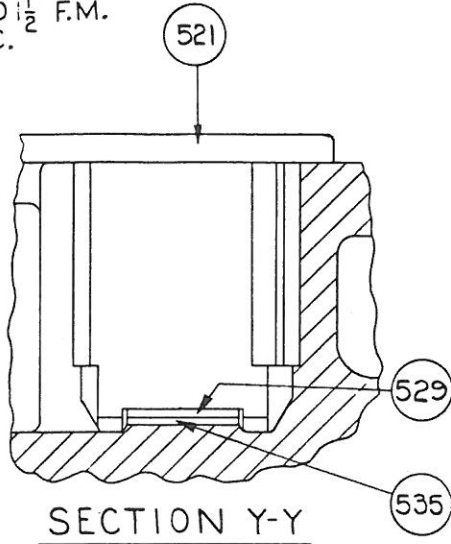


DIE SLIDE PARTS LIST



SHEET H-2-A
1" AND 1/2" F.M.
SPEC.



WHEN ORDERING REPLACEMENTS,
STATE SERIAL NUMBER AND SIZE
STAMPED ON NAME PLATE OF MACH.
AND DESIGNATE PART BY BOTH
NAME AND NUMBER.

- 501 DIE SLIDE
- 507 DIE SLIDE SIDE LINER
- 508 MOVING DIE BACKING PLATE
- 508^A MOVING DIE BACKING PLATE LINER
- 510 STATIONARY DIE THRUST BLOCK
- 511 DIE SLIDE EXTENSION TOP LINER
- 513 DIE SLIDE EXT. BLOCK SIDE LINERS
- 514 DIE SLIDE EXT. BLOCK TOP LINER
- 516 MOVING DIE SIDE LINER
- 517 STATIONARY DIE SIDE LINER
- 518 MOVING DIE BOTTOM LINER
- 519 STATIONARY DIE BOTTOM LINER

- 520 DIE CLAMPS
- 521 DIE SLIDE COVER PLATE
- 524 DIE SLIDE THRUST LINER
- 529 DIE SLIDE BOTTOM LINER
- 530 DIE SLIDE EXTENSION BLOCK
- 531 DIE CLAMP STUDS
- 532 DIE SLIDE EXT. TOP BED LINER
- 533 DIE SLIDE EXT. SIDE LINERS
- 534 DIE SLIDE EXT. BOTTOM LINER
- 535 DIE SLIDE BOTTOM BED LINER
- 536 DIE SLIDE SIDE LINER FOR BED

THE AJAX MANUFACTURING CO.
CLEVELAND 17, OHIO