

Figure B

SECTION XI - PARTS LIST

## CHAMBERSBURG MODEL "L" FORGING HAMMER (Double Frame)

Use with Assembly Drawings

<u>Part No.</u>	<u>Name</u>	<u>Part. No.</u>	<u>Name</u>
1	Anvil	67	Guide Adj. Bolt
2	Anvil Cap	68	Spool
3	Anvil Die	70	Guide Clamp Stud
4	Ram Die	71	Guide Clamp Stud
5	Ram	83	Lubricator
6	Piston Rod	93	Spreader (2000 Lb. thru 8000 Lb.)
7L	LH Frame	93	Distance Piece (12,000 Lb.)
7R	RH Frame	94	Tie Bar (2000 Lb. thru 8000 Lb.)
8	Cylinder	113	Washer
9	Cylinder Cover	115	Washer
10	Main Valve	121	Base Plate
11	Main Valve Seat	122	Segment Sleeve
13	Gland	123	Throttle Valve Connection
14	Cover	125	Throttle Arm
15	Main Valve Link	126	Rocker
16	Main Valve Rocker	127	Distance Piece
17	Throttle Valve	128	Rocker Shaft
18	Stuffing Box	137	Bushing
20	Throttle Valve Cover	138	Bracket
21	Inlet Gland	139	Base Plate Tie Bar
22	Exhaust Gland	140	Slotted Nut
23	Piston Gland	142	Upper Tie Bar
29	Ram Guide	150	Piston Gland Stud
30	Guide Shoe	151	Stud
31	Cam Lever	154	Stud
34	Segment	156	Base Plate Spreader
36	Cam	158	Key
41	Piston Ring	160	Bushing
45	Ram Die Key	165	Pin
46	Anvil Die Key	166	Pin
47	Anvil Cap Key	167	Bushing
48	Main Valve Connection	168	Stop Pin
49	Main Valve Hand Lever	169	Stop Pin
50	Throttle Valve Hand Lever	180	Weight
51	Main Valve Connection	230	Key
54	Hand Lever Shaft	231	Key
58	Rocker Lever	232	Washer
61	Coupling	233	Lube Control Meter
62	Main Valve Stem	234	Washer
63	Throttle Valve Stem	235	Gasket
64	Segment Stud	238	Square Packing

SECTION XI - PARTS LIST (cont'd)

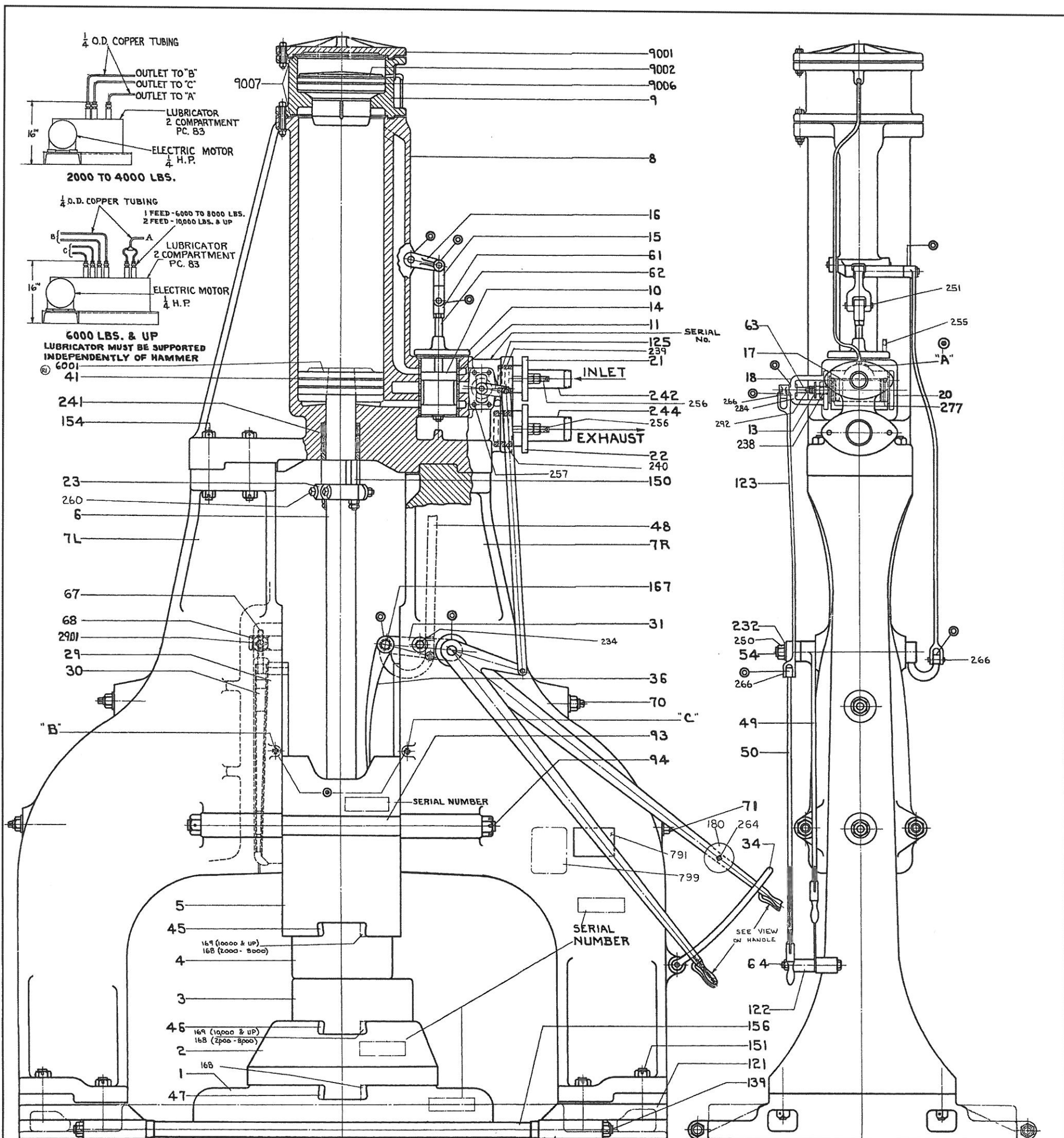
## CHAMBERSBURG MODEL "L" FORGING HAMMER (Double Frame)

Use with Assembly Drawings

<u>Part No.</u>	<u>Name</u>	<u>Part No.</u>	<u>Name</u>
239	Square Packing	1405	Spring
240	Square Packing	1406	Thumb Screw
241	Piston Rod Packing	2901	Adjusting Screw
242	Pipe Nipple	6001	Piston Head
244	Pipe Nipple	8801	Pad
247	Pin	8802	Plate
249	Nut	8803	Pad
250	Nut	9001	Lid
251	Pin	9002	Plunger
252	Tubing	9006	Piston Ring
255	Stud	9007	Gasket
256	Stud	9008	Gasket
257	Stud	9009	Cap Screw
258	Cap Screw	9010	Cap Screw
260	Clamp Bolt		
261	Washer		
264	Set Screw		
266	Pin		
268	Cap Screw		
269	Wrench		
270	Jam Nut		
271	Union Tube Tee		
273	Male Tube Elbow		
277	"O" Ring		
280	Eye Bolt		
281	Eye Bolt		
283	Grease Gun		
284	Thrust Bearing		
290	"O" Ring		
291	Plain Washer		
292	Stud		
540	Nut		
791	Name Plate		
799	Name Plate		
1001	Anvil Base		
1002	Anvil Stop Key		
1221	Segment Sleeve		
1401	Handle		
1402	Latch		
1403	Plunger		
1404	Plug		

SECTION XI - PARTS LIST (cont'd)  
 CHAMBERSBURG MODEL "L" FORGING HAMMERS  
 EQUIPPED WITH CONSOLE TYPE POWER/TROLS

<u>Part No.</u>	<u>Name</u>	<u>Part No.</u>	<u>Name</u>
461	Bushing	8511	Name Plate
491	Operating Valve Lever	8512	Cable Bracket
501	Throttle Valve Lever	8513	Pin
1251	Throttle Valve Lever	8514	Name Plate
1601	Main Valve Lever	8515	Spacer
8401	Bracket	8518	Ball Joint Connector
8402	Connector	8519	Seal Nut
8403	Connection	8520	Jam Nut
8404	Connection	8521	Jam Nut
8405	Clamp	8522	Safety Chain
8407	Bracket	8601	Power Unit
8408	Bushing (All High Frame Hammers (2000 Lb. thru 8000 Lb. Double Frame Hammers)	8602	Operating Valve Power Assist Cylinder
8408	Connection (10,000 Lb. Double Frame Hammers and Larger)	8603	Extended Connector
8409	Bushing	8604	Connector
8410	Bolt	8606	Elbow
8414	Bushing	8607	Hose
8415	Bushing	8608	Hose
8416	Washer	8611	Oil
8417	Washer	8612	Throttle Valve Power Assist Cylinder
8418	Pin	9301	Manual Starter
8501	Control Console	9302	Starter
8502	Control Console Cover	9303	Starter
8504	Bracket	9304	Transformer
8505	Lever Assebly	9305	Pushbutton
8506	Control	9306	Pushbutton
8507	Segment Support	9307	Light
8509	Coupling	9308	Light
8510	Switch Cover	9309	Fuse



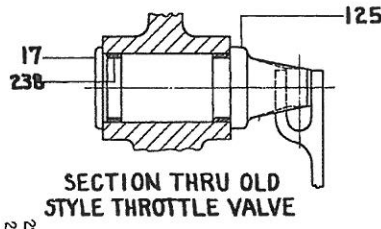
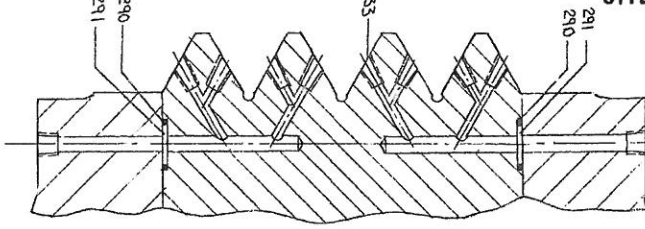
TWO PIECE ANVIL FOR 10000 LBS. HAMMERS AND UP.

ONE PIECE BASE PLATE FOR 2000 TO 4000 LBS. HAMMERS.

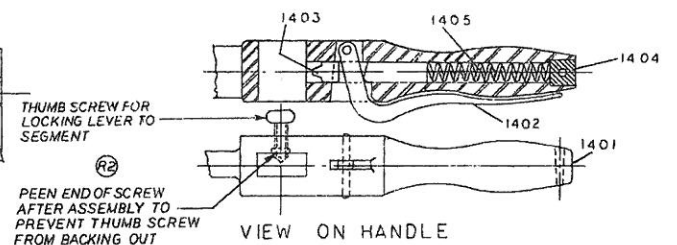
TWO PIECE BASE PLATE FOR 6000 LBS. HAMMERS AND UP.

- FOR SAFETY CABLE DIAGRAM SEE DWG NO 16941E
- ⊙ OIL - TWICE EACH EIGHT HOUR SHIFT  
SHELL HASZSA OIL 178 OR EQUAL  
VISCOSITY @ 100° F. OF 225-372
  - ⊙ LUBRICATOR - FILL AS NEEDED  
GUIDE LUBRICATION - 2 OUTLETS  
SHELL MACOMA OIL 82 OR EQUAL  
VISCOSITY @ 100° F. OF 250-3450  
CYLINDER LUBRICATION - 1 OUTLET  
SHELL CLAVIS OIL 137 OR EQUAL  
VISCOSITY @ 100° F. OF 475-525

ENLARGED SECTION SHOWING GUIDE LUBRICATION



SECTION THRU OLD STYLE THROTTLE VALVE



VIEW ON HANDLE

THIS DRAWING IS THE PROPERTY OF THE  
 STEAM HAMMER MANUFACTURING COMPANY  
 WHICH HAS BEEN CHANGED 3-28-38 REC 2

NO.	REV.	DATE	BY	CHKD.	DESCRIPTION
1					ASSEMBLY
2					DOUBLE HAMMER
3					STEAM

CONSULTING ENGINEERING COMPANY  
 1700 Broadway  
 New York, N. Y. U. S. A.  
 TITLE: ASSEMBLY  
 DOUBLE HAMMER  
 STEAM  
 SIZE: HD  
 1407E