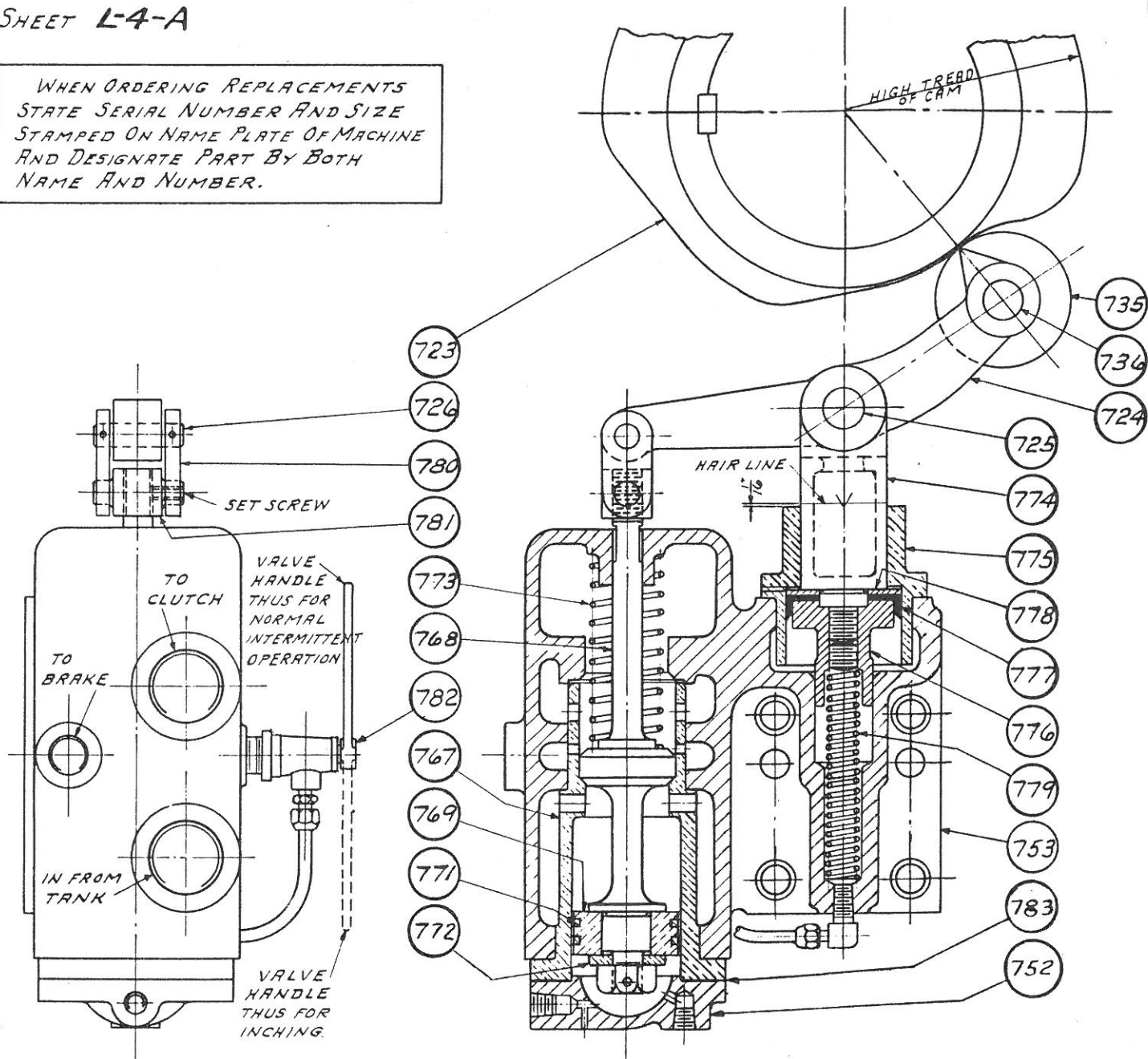


WHEN ORDERING REPLACEMENTS  
STATE SERIAL NUMBER AND SIZE  
STAMPED ON NAME PLATE OF MACHINE  
AND DESIGNATE PART BY BOTH  
NAME AND NUMBER.



- 723 TIMER CAM
- 724 TIMER BELL CRANK
- 725 CAM LEVER FULCRUM PIN
- 726 LINK PIN
- 735 CAM ROLLER
- 736 CAM ROLLER STUD
- 752 CYLINDER HEAD
- 753 VALVE BODY
- 767 VALVE SLEEVE
- 768 VALVE POPPET
- 769 VALVE PISTON
- 771 VALVE PISTON RINGS
- 772 VALVE PISTON CLAMP WASHER

- 773 VALVE POPPET SPRING
- 774 FULCRUM PLUNGER
- 775 FULCRUM CYLINDER
- 776 FULCRUM PISTON NUT
- 777 FULCRUM PISTON CUP PACKING
- 778 FULCRUM PACKING FOLLOWER RING
- 779 FULCRUM COUNTER BALANCE SPRING
- 780 LINKS
- 781 TRUNION NUT
- 782 INCHING SELECTOR VALVE
- 783 VALVE CYLINDER HEAD GASKET

ADJUSTMENT

WITH HANDLE OF CLECO VALVE (782) SET FOR NORMAL INTERMITTENT OPERATION, DEPRESS FOOT VALVE TO "ON", AND OBSERVE POSITION OF "V" ON FULCRUM PLUNGER (774). ROTATE CRANKSHAFT UNTIL CAM ROLLER (735) IS UNDER HIGH PART OF TIMER CAM (723) AND AGAIN OBSERVE POSITION OF "V". THE HIGH PART OF THE TIMER CAM (723) SHOULD DEPRESS THE FULCRUM PLUNGER (774),  $\frac{1}{8}$ " FROM ITS EXTREME UP POSITION AS OBSERVED AT "V". PROPER ADJUSTMENT CAN READILY BE OBSERVED WITH MACHIN