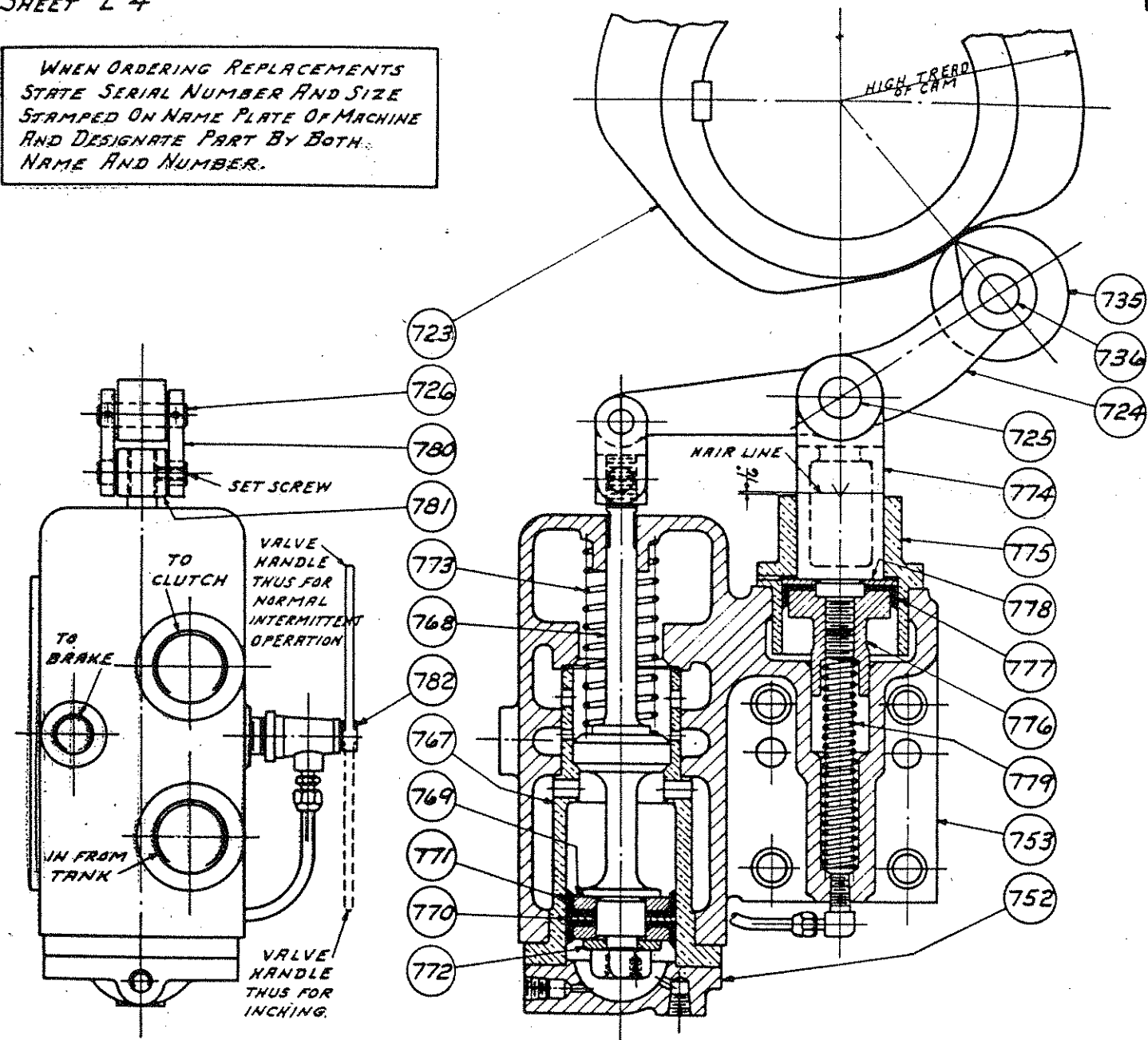


WHEN ORDERING REPLACEMENTS
STATE SERIAL NUMBER AND SIZE
STAMPED ON NAME PLATE OF MACHINE
AND DESIGNATE PART BY BOTH
NAME AND NUMBER.



- 723 TIMER CAM
- 724 TIMER BELL CRANK
- 725 CAM LEVER FULCRUM PIN
- 726 LINK PIN
- 735 CAM ROLLER
- 736 CAM ROLLER PIN
- 752 CYLINDER HEAD
- 753 VALVE BODY
- 767 VALVE SLEEVE
- 768 VALVE POPPET
- 769 VALVE CUP PACKING RET. RINGS.
- 770 VALVE CUP PACKING FOLLOWER RING.
- 771 VALVE PISTON CUP PACKINGS.
- 772 VALVE PACKING CLAMP WASHERS.

- 773 VALVE SPRING
- 774 FULCRUM PLUNGER
- 775 FULCRUM CYLINDER
- 776 FULCRUM PISTON NUT
- 777 FULCRUM PISTON CUP PACKING.
- 778 FULCRUM PACKING FOLLOWER RING.
- 779 FULCRUM COUNTER BALANCE SPRING.
- 780 LINKS.
- 781 TRUNION NUT.
- 782 1/4 CLECO VALVE - STYLE RA

ADJUSTMENT

WITH HANDLE OF CLECO VALVE (782) SET FOR NORMAL INTERMITTENT OPERATION, DEPRESS FOOT VALVE TO "ON" POSITION. WHEN ROLLER (735) IS ON HIGH TREAD OF CAM (723) RELEASE SET SCREW IN TRUNION NUT (781), RAISE OR LOWER VALVE POPPET (768) WITH WRENCH ON FLATS OF STEM, UNTIL POINT OF "V" STAMPED ON FULCRUM PLUNGER (774) IS IN LINE WITH FINISHED TOP OF FULCRUM CYLINDER (775), AND HAIR LINE ON FULCRUM PLUNGER (774) IS 1/16" ABOVE. AFTER THIS ADJUSTMENT IS MADE, TIGHTEN SET SCREW IN TRUNION NUT (781).