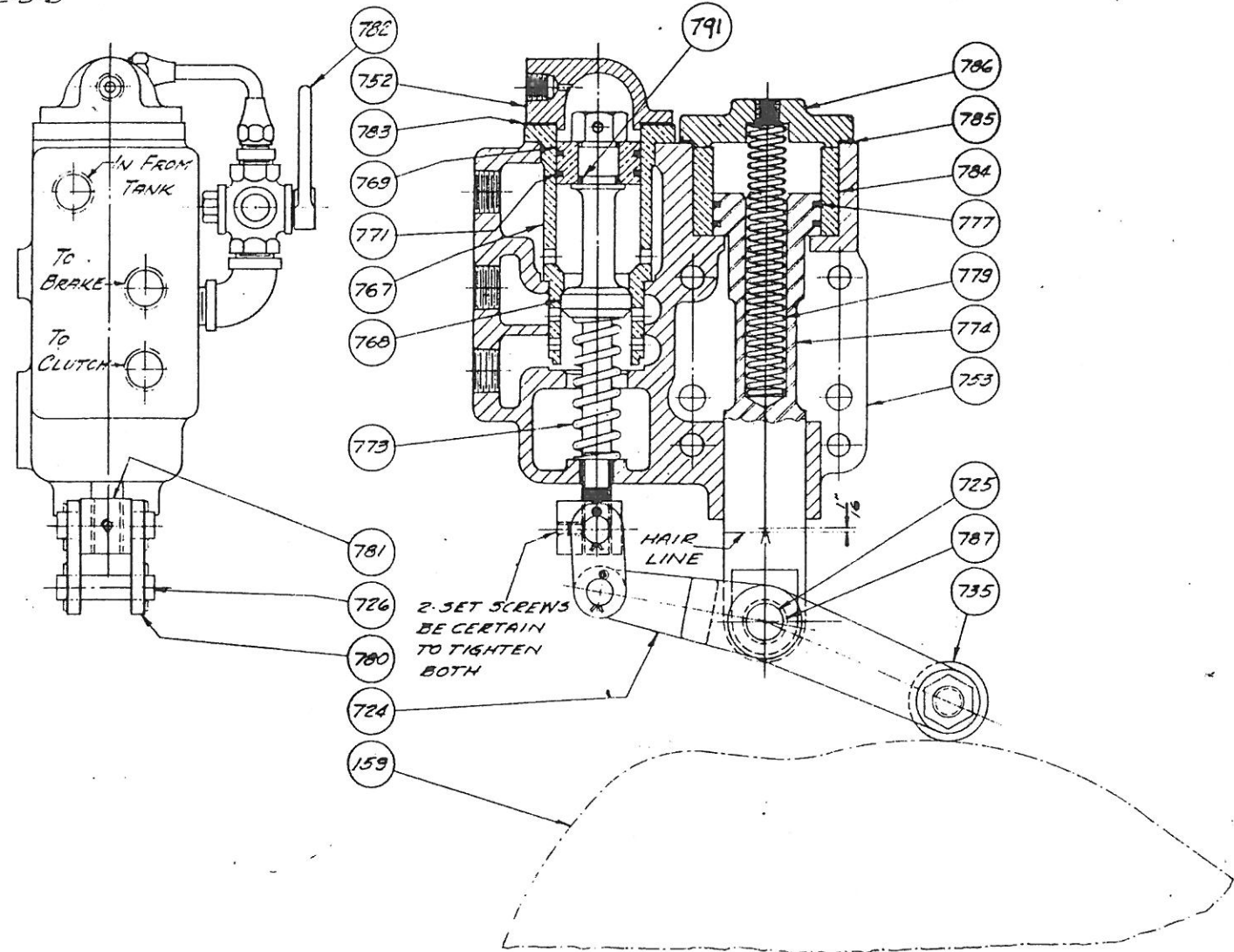


AJAX



WHEN ORDERING REPLACEMENTS STATE SERIAL NUMBER AND SIZE STAMPED ON NAME PLATE OF MACHINE, AND DESIGNATE PART BY BOTH NAME AND NUMBER

- 159 ECCENTRIC BRAKE DRUM & CAM
- 724 TIMER BELLCRANK
- 725 CAM LEVER FULCRUM PIN
- 726 LINK PIN
- 735 CAM ROLLER, PIN, AND BUSHING ASSEMBLY
- 752 VALVE CYLINDER HEAD
- 753 VALVE BODY
- 767 VALVE SLEEVE
- 768 VALVE POPPET
- 769 VALVE PISTON
- 771 VALVE PISTON "O" RINGS

- 773 VALVE POPPET SPRING
- 774 FULCRUM PLUNGER PISTON
- 777 FULCRUM PLUNGER PISTON RINGS
- 779 FULCRUM COUNTERBALANCE SPRING
- 780 LINKS
- 781 TRUNNION NUT
- 782 INCHING SELECTOR VALVE
- 783 VALVE CYLINDER HEAD GASKET
- 784 FULCRUM CYLINDER BUSHING
- 785 FULCRUM CYLINDER HEAD GASKET
- 786 FULCRUM CYLINDER HEAD
- 787 FULCRUM PIN BUSHING
- 791 "O" RING

AJAX

ADJUSTMENT

FLYWHEEL NOT RUNNING — AIR PRESSURE ON SYSTEM.
WITH HANDLE OF INCHING SELECTOR VALVE (782) SET ON "RUN" FOR NORMAL INTERMITTENT OPERATION, DEPRESS FOOT VALVE TO "ON" AND OBSERVE POSITION OF "V" ON FULCRUM PLUNGER (774). ROTATE CRANKSHAFT UNTIL CAM ROLLER (735) IS ON HIGH PART OF TIMER CAM (723) AND AGAIN OBSERVE POSITION OF "V". IF THE HIGH PART OF THE TIMER CAM HAS MOVED "V" ABOUT $\frac{1}{16}$ ", THE SETTING IS CORRECT. IF NOT, ADJUST THE TRUNNION NUT (781) ON STEM OF VALVE POPPET (768) TO OBTAIN THIS MOVEMENT, AND LOCK IN POSITION BY TIGHTENING THE SET SCREWS AGAINST THE NEAREST FLAT ON THE STEM. (BE SURE TO TIGHTEN SET SCREW AND LOCKING SET SCREW.) PROPER ADJUSTMENT CAN BE READILY OBSERVED WITH MACHINE IN NORMAL OPERATION.

TO "INCH" MACHINE

TURN HANDLE OF INCHING SELECTOR VALVE (782) TO "INCH" POSITION AND OPERATE MACHINE BY TREADLING FOOT VALVE WITH FLYWHEEL COASTING AT REDUCED SPEED.