

ADJUSTMENT

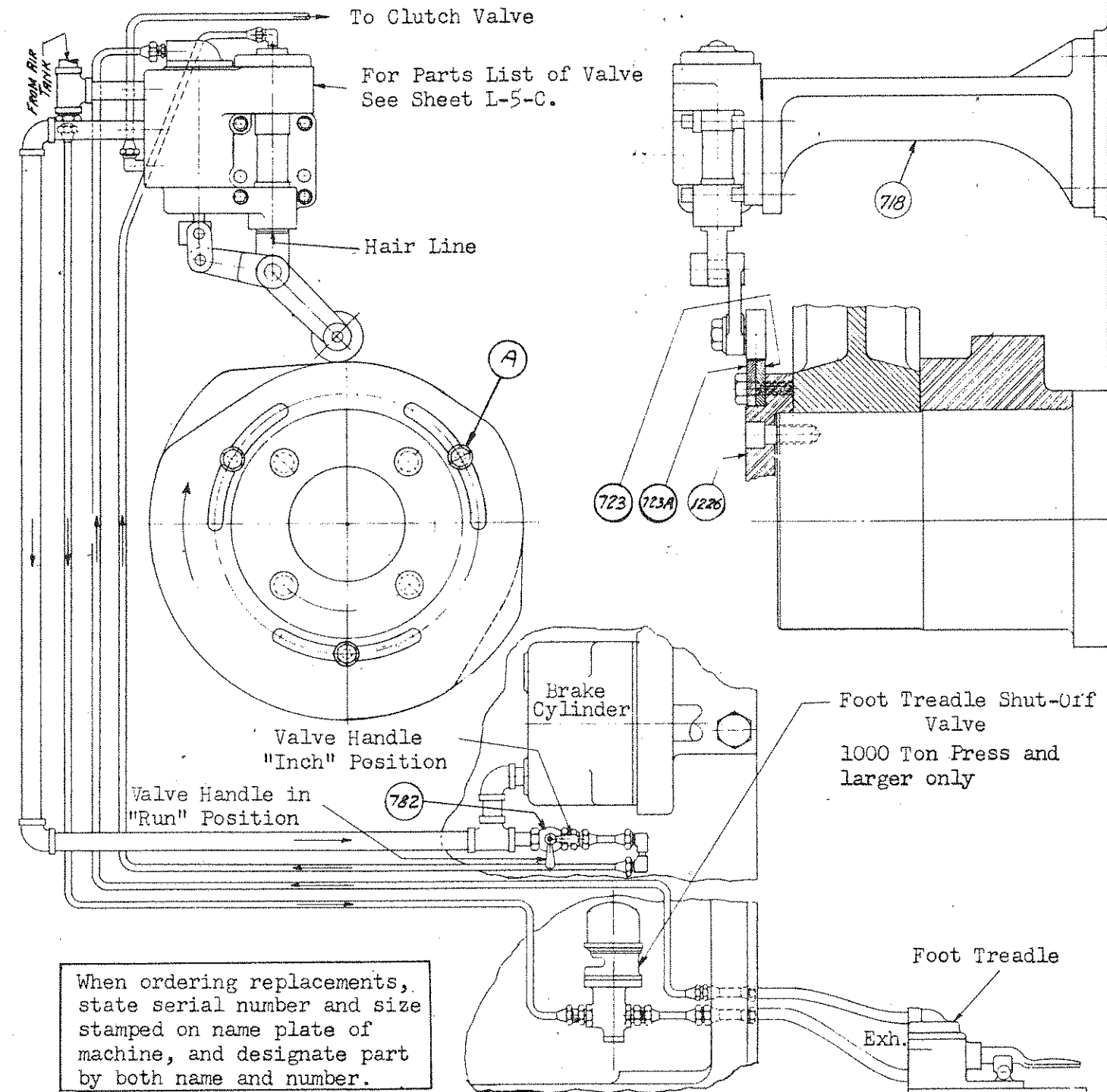
With handle of Inching Selector Valve (782) set for normal intermittent operation, depress Foot Valve to "On", and observe position of "V" on Fulcrum Plunger (774). Rotate Eccentric Shaft until Cam Roller (735) is on high part of Timer Cam (723) and again observe position of "V". If the high part of the Timer Cam has moved "V" about 1/16", the setting is correct. If not, adjust the Trunnion Nut (781) on Stem of Valve Poppet (768) to obtain this movement, and lock in position by tightening the set-screws against the nearest flat on the stem. (Be certain to tighten both set-screw and locking set-screw). Proper adjustment can be readily observed with machine in normal operation.

TO CHANGE TIMING

Check to see that brake is in proper adjustment and that clutch is releasing promptly, before changing timing. If brake and clutch are adjusted properly, and press still does not stop at top dead center, proceed as follows: - (1) Loosen Cap Screws (A) in Timer Cam (723). (2) To advance timing (to stop machine earlier), rotate Adjustable Timer Cam (723-A) clockwise. To delay timing (to stop machine later), rotate Cam counter-clockwise.

TO "INCH" MACHINE

Turn handle of Inching Selector Valve (782) to "Inch" Position and operate machine by treading foot Valve with Flywheel Coasting at reduced speed.



When ordering replacements, state serial number and size stamped on name plate of machine, and designate part by both name and number.

- | | | | |
|------|------------------------|------|---------------------------|
| 718 | Timer mounting Bracket | 774 | Fulcrum Plunger Piston |
| 723 | Stationary Timer Cam | 777 | Ful.Plun.Piston Rings |
| 723A | Adjustable Timer Cam | 779 | Ful.Counterbalance Spring |
| 724 | Timer Bellcrank | 780 | Links |
| 725 | Cam Lever Fulcrum Pin | 781 | Trunnion Nut |
| 726 | Link Pin | 782 | Inching Selector Valve |
| 735 | Cam Roller Assembly | 783 | Valve Cyl.Head Gasket |
| 752 | Valve Cylinder Head | 784 | Fulcrum Cylinder Bushing |
| 753 | Valve Body | 785 | Fulcrum Cyl.Head Gasket |
| 767 | Valve Sleeve | 786 | Fulcrum Cyl.Head |
| 768 | Valve Poppet | 787 | Fulcrum Pin Bushing |
| 769 | Valve Piston | 791 | "O" Ring |
| 771 | Valve Piston "O" Rings | 1226 | Brake Drum Retainer Plate |
| 773 | Valve Poppet Spring | | |