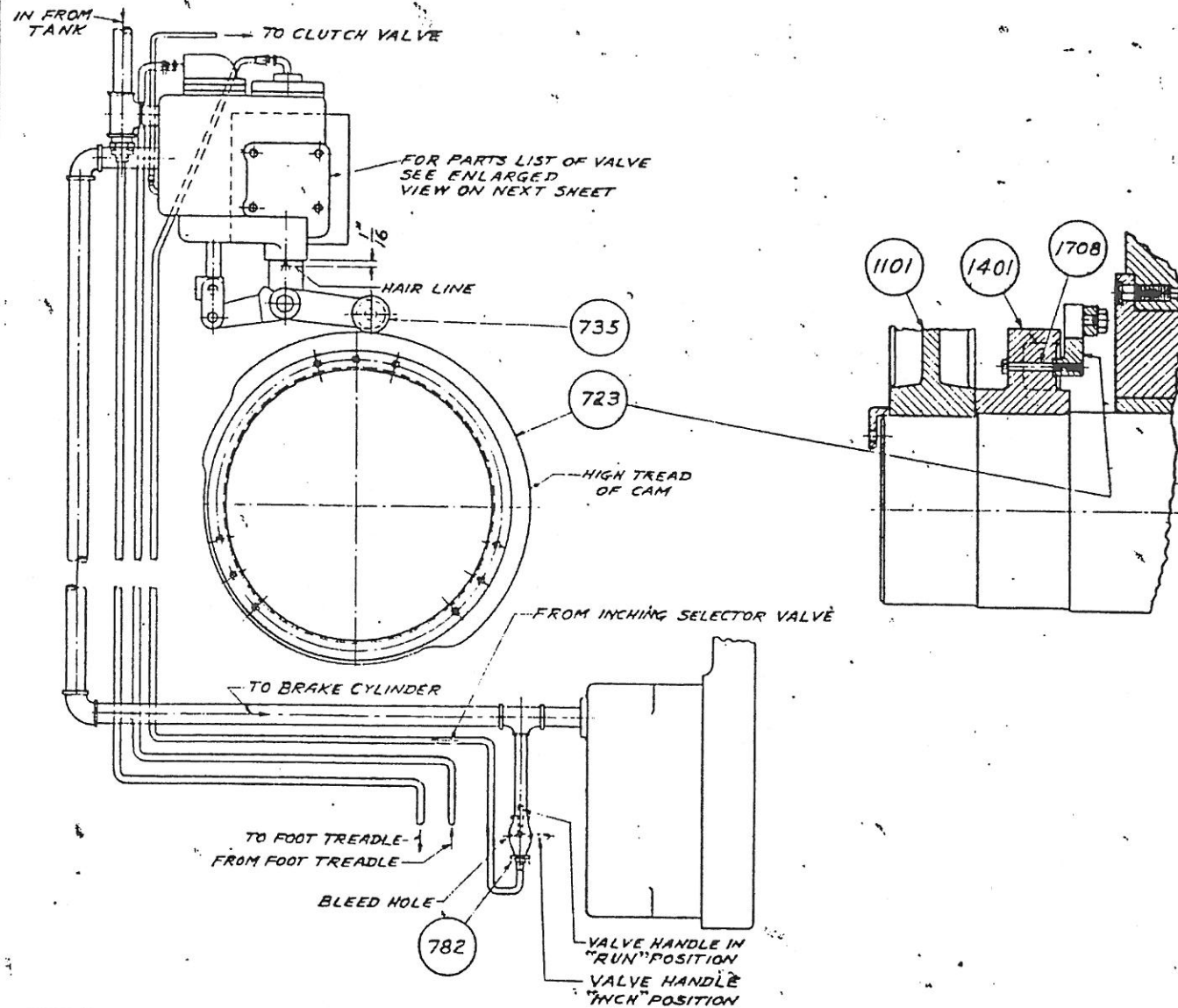


POPPET TYPE VALVE
TIMER PARTS LIST

SHEET L-5PA

AJAX



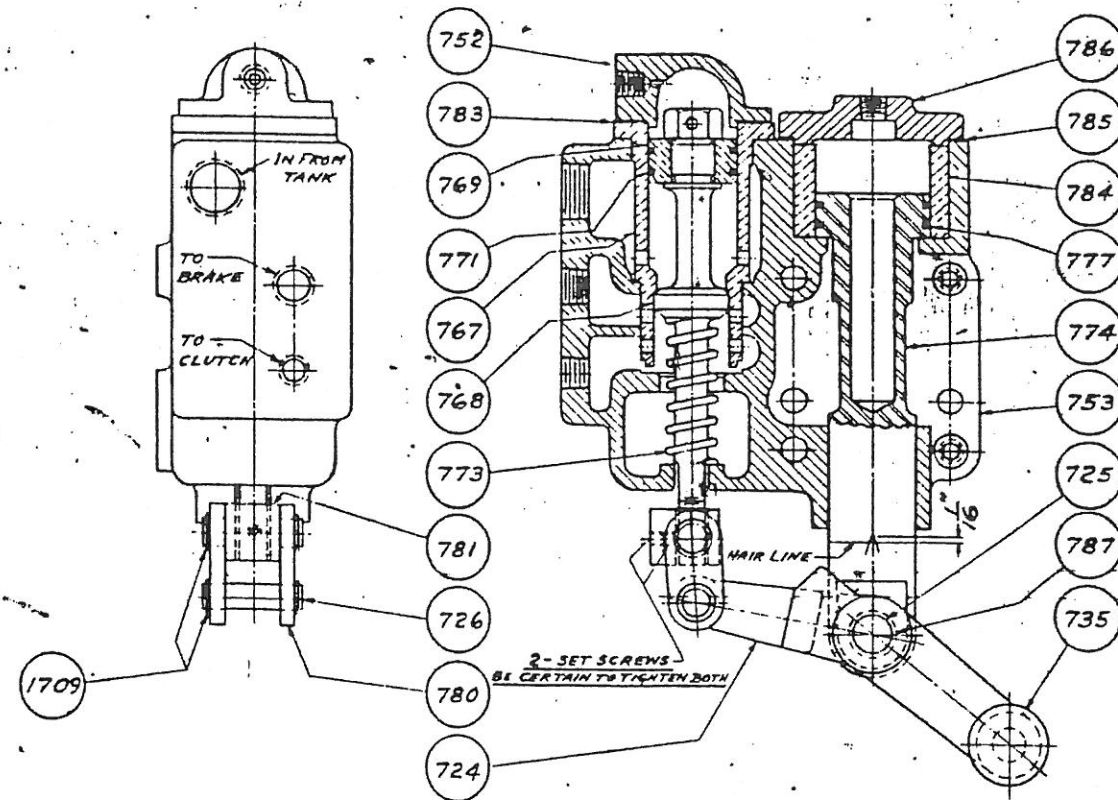
WHEN ORDERING REPLACEMENTS, STATE SERIAL NUMBER AND SIZE STAMPED ON NAME PLATE OF MACHINE, AND DESIGNATE PART BY BOTH NAME AND NUMBER.

- | | |
|---|-----------------------------------|
| 723 TIMER CAM. | 774 FULCRUM PLUNGER PISTON. |
| 724 TIMER BELL CRANK. | 777 FULCRUM PLUNGER PISTON RINGS. |
| 725 CAM LEVER FULCRUM PIN. | 780 LINKS. |
| 726 LINK PIN. | 781 TRUNNION NUT. |
| 735 CAM ROLLER, PIN, AND BRG. ASSEMBLY. | 782 INCHING SELECTOR VALVE. |
| 752 VALVE CYLINDER HEAD. | 783 VALVE CYLINDER HEAD GASKET. |
| 753 VALVE BODY. | 784 FULCRUM CYLINDER BUSHING. |
| 767 VALVE SLEEVE. | 785 FULCRUM CYLINDER HEAD GASKET. |
| 768 VALVE POPPET. | 786 FULCRUM CYLINDER HEAD. |
| 769 VALVE PISTON. | 787 FULCRUM PIN BUSHING. |
| 771 VALVE PISTON RINGS. | 1708 TIMER CAM CAP SCREWS. |
| 773 VALVE POPPET SPRING. | 1709 RETAINING RINGS. |

THE AJAX MANUFACTURING COMPANY
CLEVELAND (17), OHIO.

POPPET TYPE VALVE
TIMER INSTRUCTIONS

AJAX



ADJUSTMENT

WITH HANDLE OF INCHING SELECTOR VALVE (782) SET FOR NORMAL INTERMITTENT OPERATION, DEPRESS FOOT VALVE TO "ON", AND OBSERVE POSITION OF "V" ON FULCRUM PLUNGER (774). ROTATE CRANKSHAFT UNTIL CAM ROLLER (735) IS ON HIGH PART OF TIMER CAM (723) AND AGAIN OBSERVE POSITION OF "V". IF THE HIGH PART OF THE TIMER CAM (723) HAS MOVED "V" ABOUT $\frac{1}{16}$; THE SETTING IS CORRECT, IF NOT, ADJUST THE TRUNNION NUT (781) ON STEM OF VALVE POPPET (768) TO OBTAIN THIS MOVEMENT, AND LOCK IN POSITION BY TIGHTENING THE SET SCREWS AGAINST THE NEAREST FLAT ON THE STEM. (BE CERTAIN TO TIGHTEN BOTH SET SCREW AND LOCKING SET SCREW). PROPER ADJUSTMENT CAN BE READILY OBSERVED WITH MACHINE IN NORMAL OPERATION.

TO CHANGE TIMING

IF MACHINE FAILS TO STOP ON TOP DEAD CENTER, THE TIMING MAY BE CHANGED AS FOLLOWS:
1- BACK OUT CAM HOLDING SCREWS (1708) SUFFICIENTLY TO ALLOW TIMER CAM (723) TO BE ROTATED ON SHAFT.
2- TO ADVANCE TIMING (TO STOP MACHINE EARLIER) ROTATE TIMER CAM (723) CLOCKWISE UNTIL BOLT HOLES IN BOTTOM KNOCKOUT CAM (1401) ARE IN LINE WITH THE NEXT SET OF TAPPED HOLES IN TIMER CAM (723), AND REBOLT TIMER CAM (723) TIGHTLY TO BOTTOM KNOCKOUT CAM (1401).
TO RETARD TIMING (TO STOP MACHINE LATER) ROTATE TIMER CAM (723) COUNTERCLOCKWISE, AND PROCEED AS ABOVE.
IN THE EVENT THAT THE MAXIMUM ADJUSTMENT OF THE TIMER CAM (723) IN EITHER DIRECTION FAILS TO STOP MACHINE ON TOP DEAD CENTER, ADJUST THE BRAKE BAND LENGTH, OR BRAKE SPRING COMPRESSION.

TO INCH MACHINE

TO "INCH" MACHINE TURN HANDLE OF INCHING SELECTOR VALVE (782) TO "INCH" POSITION AND OPERATE MACHINE BY TREADLING FOOT VALVE WITH FLYWHEEL COASTING AT REDUCED SPEED.

THE AJAX MANUFACTURING COMPANY
CLEVELAND (17), OHIO.