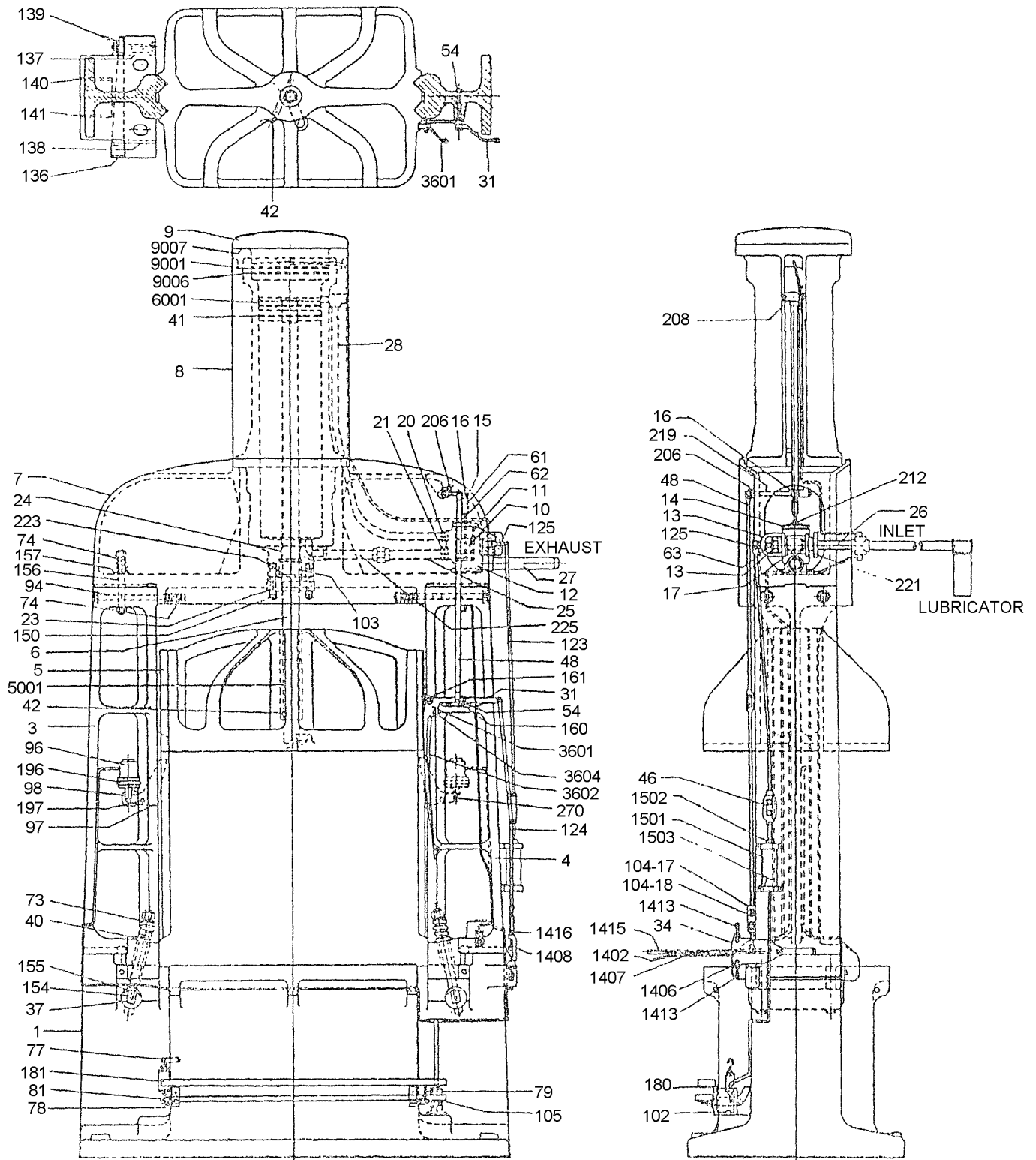


**PARTS LIST****30 x 24, 48 x 36, 66 x 36 Cecostamps – Refer to Sheet MH-100 (pg. 21) and MH-102 (Pg. 24)**

Part No.	Name	Part No.	Name	Part No.	Name
1	Anvil	18	Stuffing Box	96	Air Cylinder
3	L.H. Frame	20	Pipe Flange	97	Safety Rests
4	R.H. Frame	21	Pipe Flange	98	Piston
5	Ram	23	Piston Gland	100	Cup Leather
5001	Ram Bushing	24	Bushing	102	Operating Valve
6	Piston Rod	25	Pipe	103	Piston Rod Packing
6001	Piston Head	26	Pipe	104-17	Turnbuckle
7	Yoke	27	Pipe	104-18	Nut
8	Cylinder	28	Cooper Tubing	105	Board Plate
9	Cylinder Cover	31	Cam Lever	123	Connection Rod
9001	Plunger	34	Segment	124	Connection Rod
9006	Plunger Rings	3601	Cam Body	125	Throttle Lever
9007	Gasket	3602	Cam Center	136	Adj. Wedge
10	Main Valve	3604	Pin	137	Wearing Plate
11	Main Valve Seat	39	Stud	138	Wearing Plate
12	Main Valve Body	40	Washer	139	Clamp
13	Gland	41	Piston Ring	140	Wearing Plate
14	Main Valve Cover	42	Taper Pin	141	Wearing Plate
1402	Lever	46	Turnbuckle	150	Bolts-Piston Gland
1403	Latch	48	Main Valve Connection	154	Key
1404	Strap	54	Cam Shaft	155	Washer
1406	Bushing	61	Main Valve Coupling	156	Stud
1407	Connection Rod	62	Main Valve Stem	157	Washers
1408	Connection	63	Throttle Stem	160	Bushing
1409	Spring	73	Spring	161	Bushing
1413	Adj. Screw	74	Spring	180	Angle
1414	Lock Nut	75	Spring	181	Safety Board
1415	Handle	77	Treadle Pin	196	“U” Bolt
1416	Connection Collar	78	Treadle Shaft	197	Bolts
1417	Support Shaft	79	Treadle Arm	198	Washer
15	Main Valve Link	81	Treadle Board	206	Rocker Arm
1501	Throttle Valve Cylinder	8302	Cover	208	Air Connection
1502	Cylinder Cap Top	8303	Gland	212	Gland
1503	Cylinder Cap Bottom	8304	Washer	217	Spring
1504	Piston	8305	Washer	219	Rocker Shaft
1505	Washer	8306	Plunger	221	Gland
1506	Separator	8307	Lever Ball	223	Bushing
1507	Cup Leather	8308	Ball	225	Pipe
1508	Spring	8309	Washer	270	Arms
16	Main Valve Rocker	8310	Stop Cock		
17	Throttle Valve	94	Tie Bar		

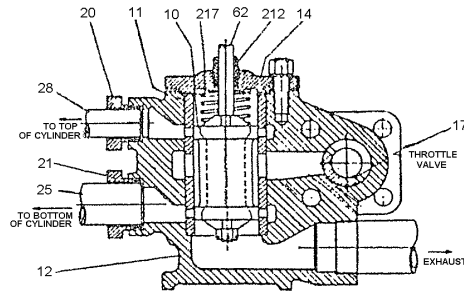
When Ordering Replacement Parts give Part Number, Name, Size Cecostamp, and Machine Number. Machine Number will be found stenciled on Right Hand Front End of Anvil, Part 1, and Yoke, Part 7.

Parts List

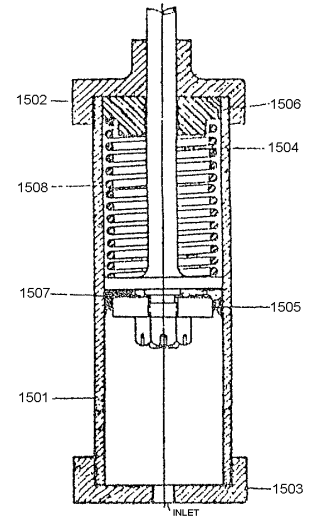


MH-100

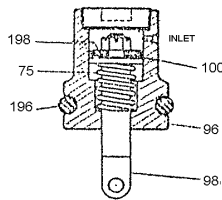
# Parts List



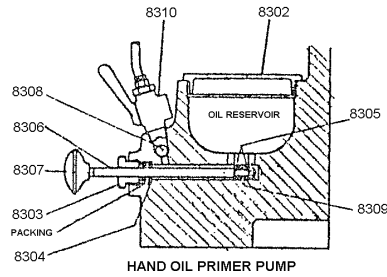
SECTION THRU OPERATING VALVE



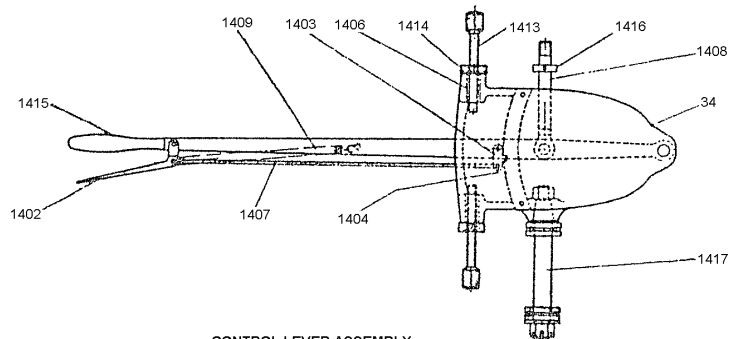
SECTION THRU THROTTLE VALVE OPERATING CYLINDER



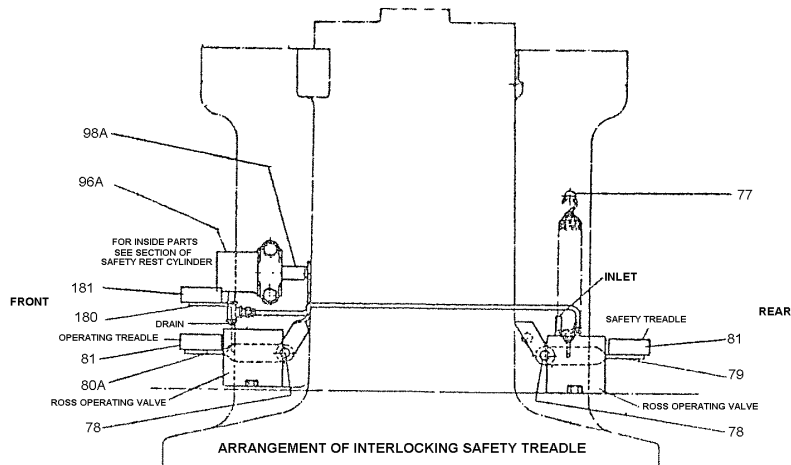
SECTION THRU SAFETY REST AIR OPERATING CYLINDERS



HAND OIL PRIMER PUMP



CONTROL LEVER ASSEMBLY



ARRANGEMENT OF INTERLOCKING SAFETY TREADLE

MH-102