

WHEN ORDERING REPLACEMENTS, STATE SERIAL NUMBER AND SIZE STAMPED ON NAME PLATE OF MACHINE AND DESIGNATE PART BY BOTH NAME AND NUMBER.

- 1101 BRAKE DRUM.
- 1102 BRAKE LINING + RIVETS.
- 1103 END BRAKE SHOES.
- 1103-A CENTER BRAKE SHOE.
- 1104 BRAKE LEVER.
- 1105 BRAKE ADJUSTING EYE BOLT.
- 1107-L BR. ANCHOR LINK - OUTSIDE.
- 1107-R BR. ANCHOR LINK - INSIDE.
- 1109 BR. CYL. INNER SPRING.
- 1109-A BR. CYL. OUTER SPRING.
- 1115 BR. OPERATING CYLINDER.
- 1116 BR. OPER. CYL. COVER.
- 1117 BR. OPER. CYL. PISTON.
- 1118 BR. CYL. PISTON PACKING RETAINER.
- 1119 BR. CYL. PISTON PACKING.
- 1120 BR. CYL. PISTON ROD.
- 1121 BR. CYL. PISTON ROD PACKING.
- 1122 PISTON ROD PACKING RETAINER.
- 1124 BR. SPRING ADJUSTING NUT.
- 1141 BR. ANCHOR CONNECT & LINK PIN.
- 1146 BR. ADJG EYE BOLT PIN.
- 1150 BR. LEVER FULCRUM PIN.
- 1152 BR. LEVER + CONNECT & LINK PIN.
- 1157 BR. SPRING RETAINER WASHER.
- 1162 BR. LEVER SUPPORT BRACKET.
- 1171 BR. SHOE CONNECT & LINK PIN.
- 1178 BR. ADJUSTING END ROCKER PIN.

- 1179 ROCKER PIN WASHER - TOP.
- 1179-A ROCKER PIN WASHER - BOTTOM.
- 1193 BR. LEVER LINK PIN.
- 1194 BR. LEVER LINKS.
- 1195 BR. LEVER TRUNNION.

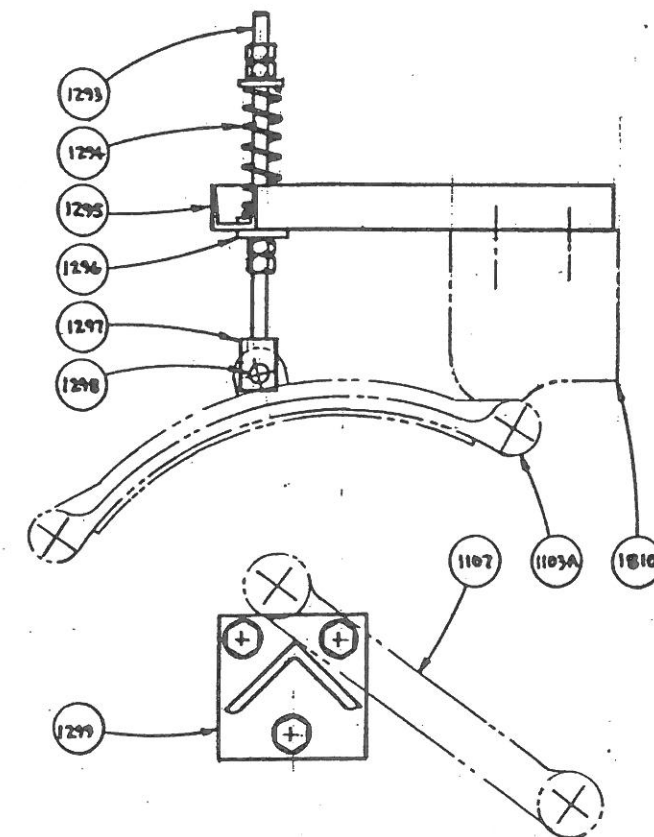
ADJUSTMENT

Adjustment of Brake Shoes by means of Brake Adjusting Eye Bolt (1105), determines Distance "A", which must not be changed as long as Distance "A" is between 1" and 1/4".

When Distance "A" has been reduced to 1/4", due to wear of Brake Lining (1102), ADJUST, making Distance "A" = 1". This is accomplished by Nuts on (1105) at "B", and if necessary, by means of turning Brake Lever Trunnion (1195) at "C".

By means of Brake Spring Adjusting Nut (1124), Brake Springs (1109) and (1109-A) should be adjusted to stop Machine on Top Center. If they must be set so tight that Air Cylinder Piston (1117), with normal recommended air pressure, cannot completely release Brake, CHECK THE CLUTCH to see that it is releasing promptly, also CHECK THE SETTING OF THE CAMS IN THE ROTARY LIMIT SWITCH, which controls Release of Clutch, and Application of Brakes.

REVERSE COMPLETE ASSEMBLY OF BRAKE SHOES when lining near the Anchor End is worn half way through, thereby increasing the life of the lining. If braking is irregular, clean lining and drum with Non-Flammable Detergent. To prevent scoring drum, use only BRASS Rivets to secure Brake Lining (1102), and never permit Brake Shoes (1103 and 1103-A) to contact Brake Drum (1101). The Brake Lining furnished will stand a temperature of 500° F., but if temperature exceeds 300° F., INVESTIGATE. If Brake Drum (1101) shows uneven wear on brake surface, pull Keys and rotate Drum 120° on Shaft, and replace Keys.



- 1293 Rod For Spring
- 1294 SPRING FOR BAND SUPPORT
- 1295 SUPPORT FOR BAND
- 1296 WASHER FOR ROD
- 1297 EYE FOR ROD
- 1298 PIN FOR EYE & SHOE
- 1299 SUPPORT FOR LINK