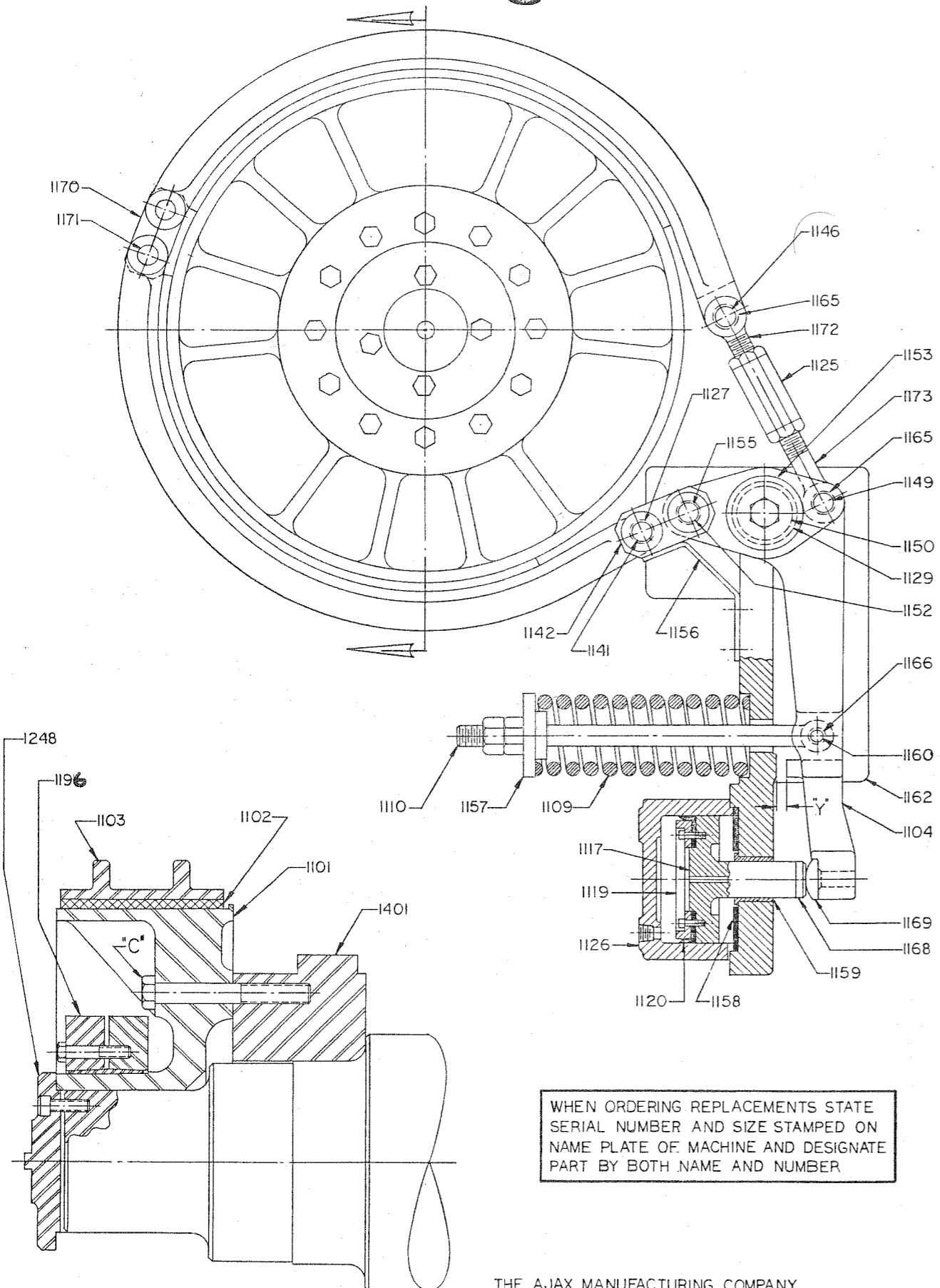


# Ajax

# Ajax



WHEN ORDERING REPLACEMENTS STATE  
SERIAL NUMBER AND SIZE STAMPED ON  
NAME PLATE OF MACHINE AND DESIGNATE  
PART BY BOTH NAME AND NUMBER

ADJUSTMENT OF BRAKE BY MEANS OF BRAKE ADJUSTING TURNBUCKLE(1125) DETERMINES DISTANCE "Y" BUT MUST NOT BE CHANGED AS LONG AS DISTANCE "Y" IS BETWEEN 12 AND 3MM (1/2 AND 1/8 IN.). WHEN LESS THAN 3MM (1/8 IN.) DUE TO WEAR OF BRAKE LINING (1102), ADJUST.

BRAKE TORQUE IS DETERMINED BY AJUSTING NUTS ON BRAKE SPRING ADJUSTING ROD(1110). SET BRAKE SPRING(1109) TO STOP RAM AT TOP DEAD CENTER. IF SPRING MUST BE SET SO TIGHT THAT AIR CYLINDER PISTON(1117) WITH NORMAL AIR PRESSURE CANNOT COMPLETELY RELEASE BRAKE, CHECK THE CLUTCH TO SEE THAT IT IS RELEASING PROMPTLY. CHECK ROTARY CAM LIMIT SWITCH TO VARIIFY THAT CLUTCH RELEASE AND BRAKE SET POINTS ARE AS RECOMMENDED ON CONTROL DIAGRAM.

REVERSE BRAKE SHOES (1103) WHEN LINING IS WORN HALF WAY THRU NEAR ANCHOR END THEREBY INCREASING THE LIFE OF THE LINING. IF BRAKING IS IRREGULAR CLEAN LINING AND DRUM WITH NON-FLAMMABLE DETERGENT. TO PREVENT SCORING DRUM USE BRASS RIVETS ONLY WHEN FASTENING BRAKE LINING(1102) TO BRAKE SHOES(1103). NEVER ALLOW BRAKE SHOES (1103) TO CONTACT BRAKE DRUM (1101). THE BRAKE LINING USED WILL STAND 500°F TEMPERATURE, BUT IF HOTTER THAN 300°F, INVESTIGATE. IF BRAKE DRUM(1101) SHOWS UNEVEN WEAR OF BRAKING SURFACE, INCH RAM TO BOTTOM DEAD CENTER THEN LOOSEN SHRINK DISC ASSEMBLY(1195) AND ROTATE TO A NEW LOCATION. REFER TO SHRINK DISC ASSEMBLY AND REMOVAL PROCEDURES.

- |   |   |
|---|---|
| 1101 BRAKE DRUM                                 | 1153 BRAKE LEVER FULCRUM PIN WASHER         |
| 1102 BRAKE LINING AND RIVETS                    | 1155 BRAKE LEVER AND CONN. LINK PIN BUSHING |
| 1103 BRAKE SHOES                                | 1156 BRAKE SHOE SUPPORT BRACKET             |
| 1104 BRAKE LEVER                                | 1157 BRAKE SPRING RETAINING WASHER          |
| 1109 BRAKE SPRING                               | 1158 BRAKE AIR CYLINDER PISTON BUMPER       |
| 1110 BRAKE SPRING ADJUSTING ROD                 | 1159 BRAKE AIR CYLINDER PISTON GUIDE BUSH.  |
| 1117 BRAKE AIR CYLINDER PISTON                  | 1160 BRAKE SPRING ADJUSTING ROD PIN         |
| 1119 BRAKE AIR CYLINDER PISTON FOLLOWER RING    | 1162 BRAKE LEVER SUPPORT BRACKET            |
| 1120 BRAKE AIR CYLINDER PISTON CUP PACKING      | 1165 BRAKE ADJUSTING EYE BOLT BUSHING       |
| 1125 BRAKE ADJUSTING TURNBUCKLE AND NUTS        | 1166 BRAKE ADJUSTING ROD BUSHING            |
| 1126 BRAKE OPERATING CYLINDER                   | 1168 BRAKE PISTON ROD BUMPER PLUG           |
| 1127 BRAKE SHOE AND CONNECTING LINK PIN BUSHING | 1169 BRAKE LEVER BUMPER PLUG                |
| 1129 BRAKE LEVER FULCRUM PIN BUSHING            | 1170 BRAKE SHOE CONNECTING LINK             |
| 1141 BRAKE SHOE AND CONNECTING LINK PIN         | 1171 BRAKE SHOE CONNECTING LINK PIN         |
| 1142 BRAKE SHOE AND LEVER CONNECTING LINKS      | 1172 BRAKE ADJUSTING TOP EYE BOLT           |
| 1146 BRAKE TOP ADJUSTING EYE BOLT PIN           | 1173 BRAKE ADJUSTING BOTTOM EYE BOLT        |
| 1149 BRAKE BOTMOM ADJUSTING EYE BOLT PIN        | 1195 SHRINK DISC ASSEMBLY                   |
| 1150 BRAKE LEVER FULCRUM PIN                    | 1248 BRAKE DRUM RETAINING PLATE             |
| 1152 BRAKE LEVER AND CONNECTING LINK PIN        | 1401 BOTTOM KNOCKOUT CAM                    |