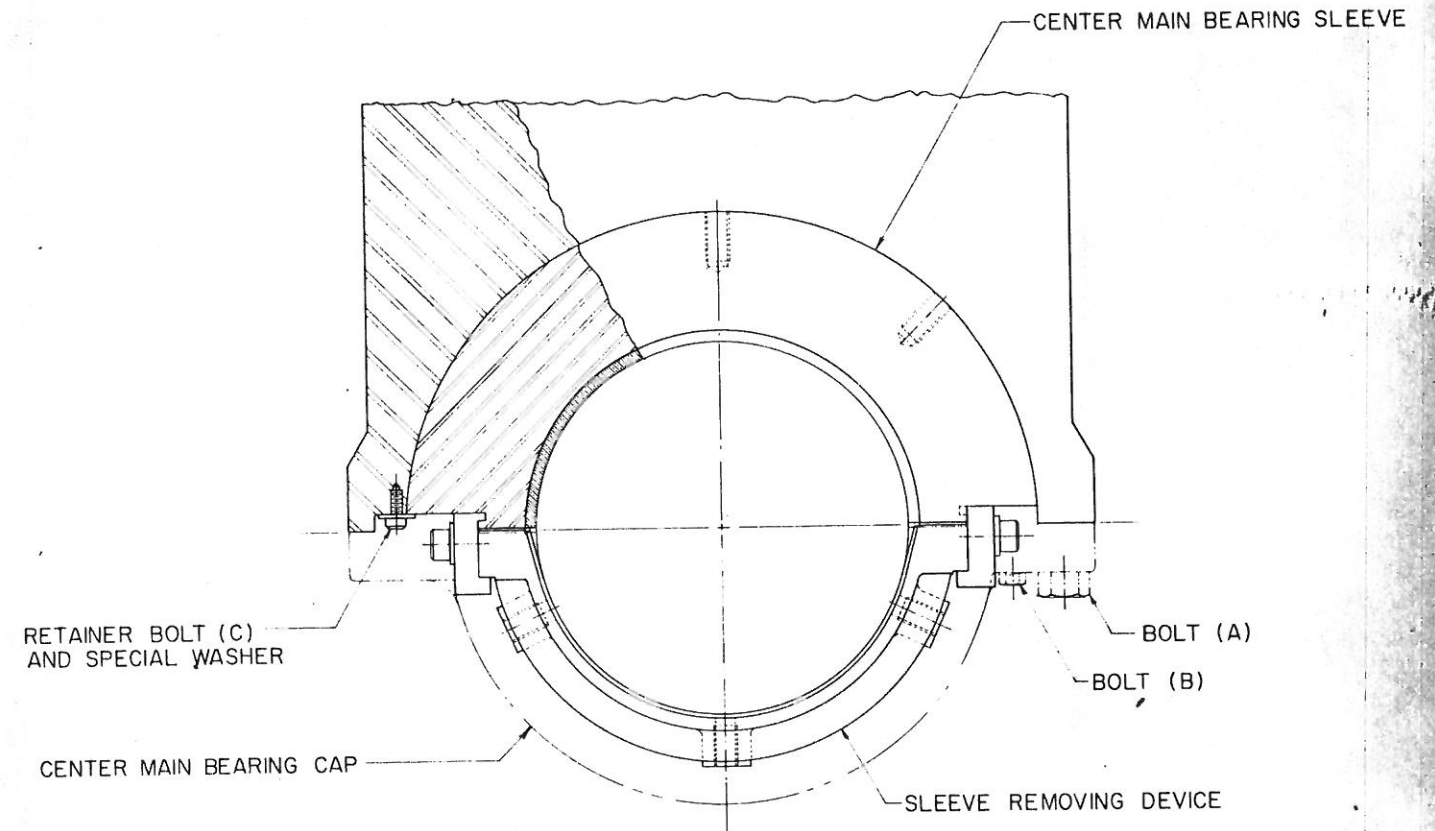


WHEN ORDERING REPLACEMENTS, STATE SERIAL NUMBER AND SIZE STAMPED ON NAME PLATE OF MACHINE, AND DESIGNATE PART BY BOTH NAME AND NUMBER.

- | | | | |
|------|---|------|--|
| 1201 | CRANKSHAFT | 1234 | BEARING SPACER |
| 1202 | CRANKSHAFT R.H. SLEEVE | 1238 | PINION SHAFT END CAP |
| 1203 | CRANKSHAFT R.H. SLEEVE BUSHING | 1240 | BEARING SPACER |
| 1204 | CRANKSHAFT L.H. SLEEVE | 1241 | PINION SHAFT L.H. BEARING RETAINING COLLAR |
| 1205 | CRANKSHAFT L.H. SLEEVE BUSHING | 1243 | FLYWHEEL CLAMP BOLT GUARD |
| 1206 | MAIN GEAR | 1244 | FLYWHEEL CLAMP BOLT NUTS |
| 1208 | MAIN PINION | 1245 | BELLEVILLE WASHERS |
| 1209 | PINION SHAFT | 1246 | FLYWHEEL CLAMP BOLT SHIMS |
| 1211 | PINION SHAFT R.H. ROLLER BEARING | 1247 | FLYWHEEL BUSHING |
| 1212 | PINION SHAFT R.H. BEARING RETAINING COVER | 1248 | BRAKE DRUM RETAINING PLATE |
| 1216 | PINION SHAFT L.H. ROLLER BEARING | 1249 | TIMER DRIVING SPROCKET |
| 1220 | FLYWHEEL RIM | 1251 | LUBRICATION SEAL |
| 1221 | FLYWHEEL HUB | 1252 | SEAL RETAINING PLATE |
| 1222 | FLYWHEEL CLAMP PLATE | 1253 | CENTER MAIN BEARING SLEEVE |
| 1223 | FLYWHEEL CLAMP BOLTS | 1254 | CENTER MAIN BUSHING (UPPER HALF) |
| 1224 | FLYWHEEL FRICTION PLATES | 1255 | CENTER MAIN BEARING CAP |
| 1225 | FLYWHEEL HUB RETAINING PLATE | 1256 | CENTER MAIN BUSHING (LOWER HALF) |
| 1232 | BEARING SPACER | | |



REMOVING THE CENTER MAIN BEARING

THE CENTER MAIN BEARING CONSISTS OF A BEARING CAP (1255) WITH A HALF BUSHING (1256), AND A BEARING SLEEVE (1253), ALSO WITH A HALF BUSHING (1254). THE SLEEVE IS BOLTED TO THE CAP WITH SIX BOLTS (B). THE CAP IS BOLTED TO THE FRAME WITH EIGHT BOLTS (A). ALSO, THE UPPER HALF SLEEVE IS RETAINED IN THE FRAME WITH FOUR BOLTS (C) AND SPECIAL WASHERS.

TO REMOVE THE CENTER MAIN BEARING, FOLLOW THE PROCEDURE LISTED BELOW:

- 1 REMOVE ALL PIPING AND THERMOCOUPLES FROM THE CENTER MAIN BEARING.
 - 2 REMOVE EIGHT BOLTS (A).
 - 3 WHILE SUPPORTING THE CAP, REMOVE SIX BOLTS (B), AND REMOVE CAP (1255).
 - 4 ATTACH SLEEVE REMOVING DEVICE TO SLEEVE TIGHTLY.
- NOTE:** THE SLEEVE WEIGHS IN THE VICINITY OF 4000 POUNDS, AND CARE MUST BE EXERCISED IN HANDLING IT.
- 5 INSERT EYEBOLTS INTO THE SLEEVE REMOVING DEVICE, AND SECURE THE DEVICE. REMOVE THE FOUR RETAINER BOLTS (C) AND SPECIAL WASHERS. GENTLY ROTATE THE SLEEVE AROUND THE ECCENTRIC SHAFT, KEEPING IT UNDER CONTROL. DO NOT HESITATE TO "WALK" THE EYE BOLTS AROUND THE PERIPHERY, USING TAPPED HOLES IN THE DEVICE AND THE SLEEVE.
 - 6 WHEN THE SLEEVE HAS BEEN ROTATED DOWN, PLACE A SUPPORT UNDER IT, AND DISENGAGE THE DEVICE. THEN REMOVE THE SLEEVE.

TO INSTALL THE CENTER MAIN BEARING, REVERSE THE ABOVE PROCEDURE.