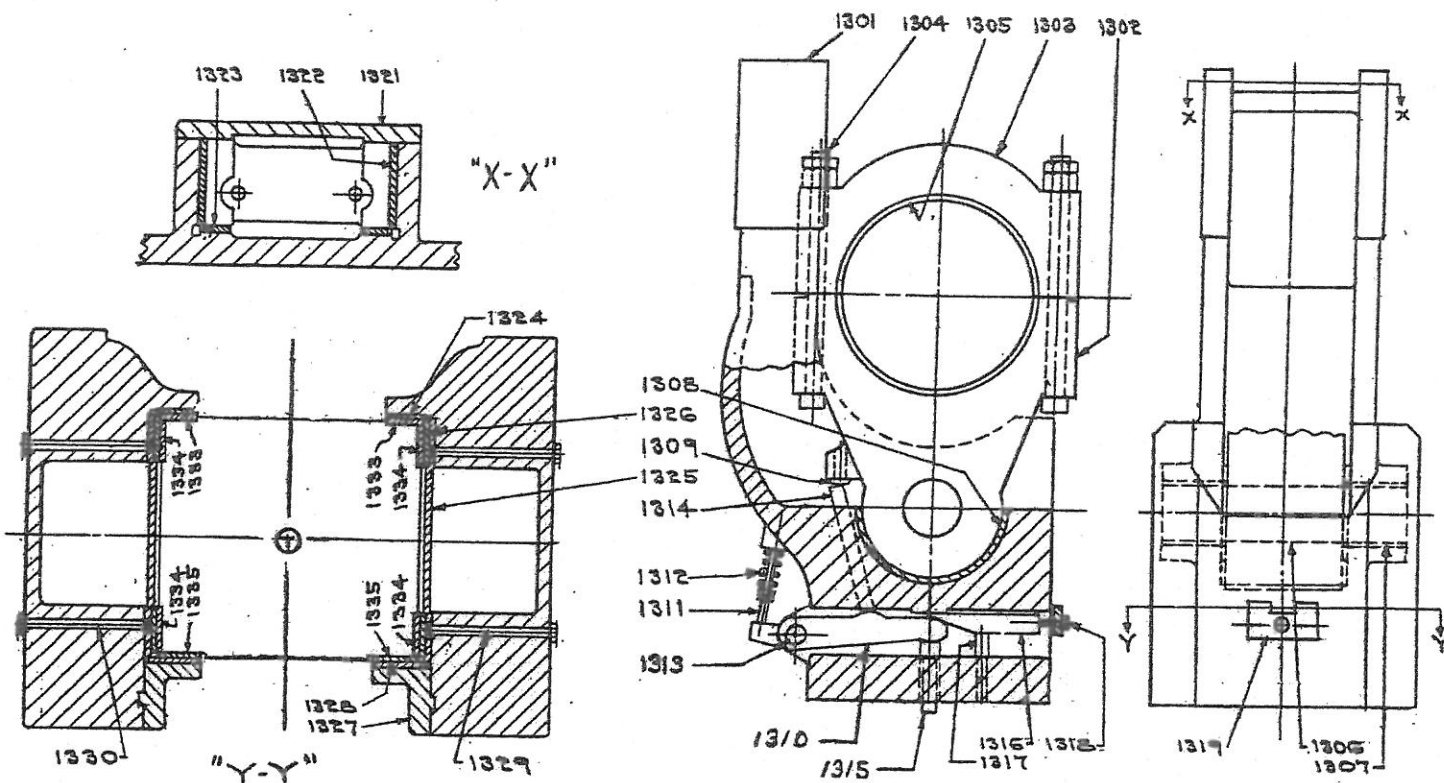


RAM PARTS LIST

AJAX

SHEET PF-1-B



WHEN ORDERING REPLACEMENTS, STATE SERIAL NUMBER AND SIZE STAMPED ON NAME PLATE OF MACHINE AND DESIGNATE PART BY BOTH NAME AND NUMBER

1301 RAM	1321 RAM EXTENSION COVER PLATE
1302 PITMAN	1322 RAM EXTENSION SIDE LINERS
1303 PITMAN CAP	1323 RAM EXTENSION REAR LINERS
1304 PITMAN BOLTS	1324 FRAME REAR LINERS
1305 PITMAN AND CRANKSHAFT BUSHING	1325 FRAME SIDE LINERS
1306 PITMAN WRIST PIN	1326 FRAME SIDE LINER INSERTS
1307 PITMAN WRIST PIN BUSHINGS	1327 FRONT GIBS-RIGHT AND LEFT HAND
1308 RAM THRUST BUSHING	1328 FRONT GIB LINERS
1309 PITMAN KICKER LUG INSERT	1329 RIGHT SIDE LINER SCREWS
1310 UPPER KNOCKOUT LEVER	1330 LEFT SIDE LINER SCREWS
1311 UPPER KNOCKOUT SPRING ROD	1333 RAM REAR LINERS
1312 UPPER KNOCKOUT SPRING	1334 RAM SIDE LINERS
1313 UPPER KNOCKOUT LEVER FULCRUM PIN	1335 RAM FRONT LINERS
1314 UPPER KNOCKOUT DRIVE PIN	
1315 UPPER KNOCKOUT KICKER PIN	
1316 UPPER KNOCKOUT ADJUSTABLE WEDGE	
1317 UPPER KNOCKOUT WEDGE SUPPORT	
1318 UPPER KNOCKOUT ADJUSTING SCREW	
1319 UPPER KNOCKOUT ADJ. SCREW PLATE	

THE AJAX MANUFACTURING CO.
CLEVELAND 17 OHIO

AJAX

ADJUSTMENT FOR SIDE WEAR

- 1 REMOVE FRONT GIBS (1327)
- 2 LOOSEN SCREWS (1329 & 1330) IN SIDE OF PRESS FRAME AND REMOVE LINERS (1325)
- 3 INSTALL SUITABLE SHIMS TO FIT BETWEEN LINER AND FRAME, ALLOWING APPROX .0005" PER INCH OF RAM WIDTH FOR RUNNING CLEARANCE AND REPLACE LINERS REVERSING ABOVE PROCEDURE

ADJUSTMENT FOR FRONT TO BACK WEAR

- 4 REMOVE LINERS (1323) AND INSTALL SUITABLE SHIMS BETWEEN THEM AND FRONT GIBS (1327). ALSO REMOVE LINERS (1324) AND INSTALL SUITABLE SHIMS BETWEEN THEM AND FRAME, ALLOW OPERATING CLEARANCE OF APPROX .0005" PER INCH OF WIDTH.
- 5 TO COMPENSATE FOR WEAR OF THE RAM EXTENSION REMOVE LINERS (1323) AND INSTALL SUITABLE SHIMS BETWEEN THEM AND FRAME IF NECESSARY REMOVE SHIMS OF THE PROPER THICKNESS FROM UNDER EXTENSION COVER PLATE (1321)

UPPER KNOCKOUT ADJUSTMENT

- 6 TURNING ADJUSTING SCREW (1318) COUNTERCLOCKWISE WILL DRIVE ADJUSTING WEDGE (1316) IN ABOVE KNOCKOUT LEVER (1310) LIMITING THE MOVEMENT AND FORMING A POSITIVE BACKING UP OF KICKER PIN (1315)

THE AJAX MANUFACTURING CO.
CLEVELAND 17 OHIO