

Ajax

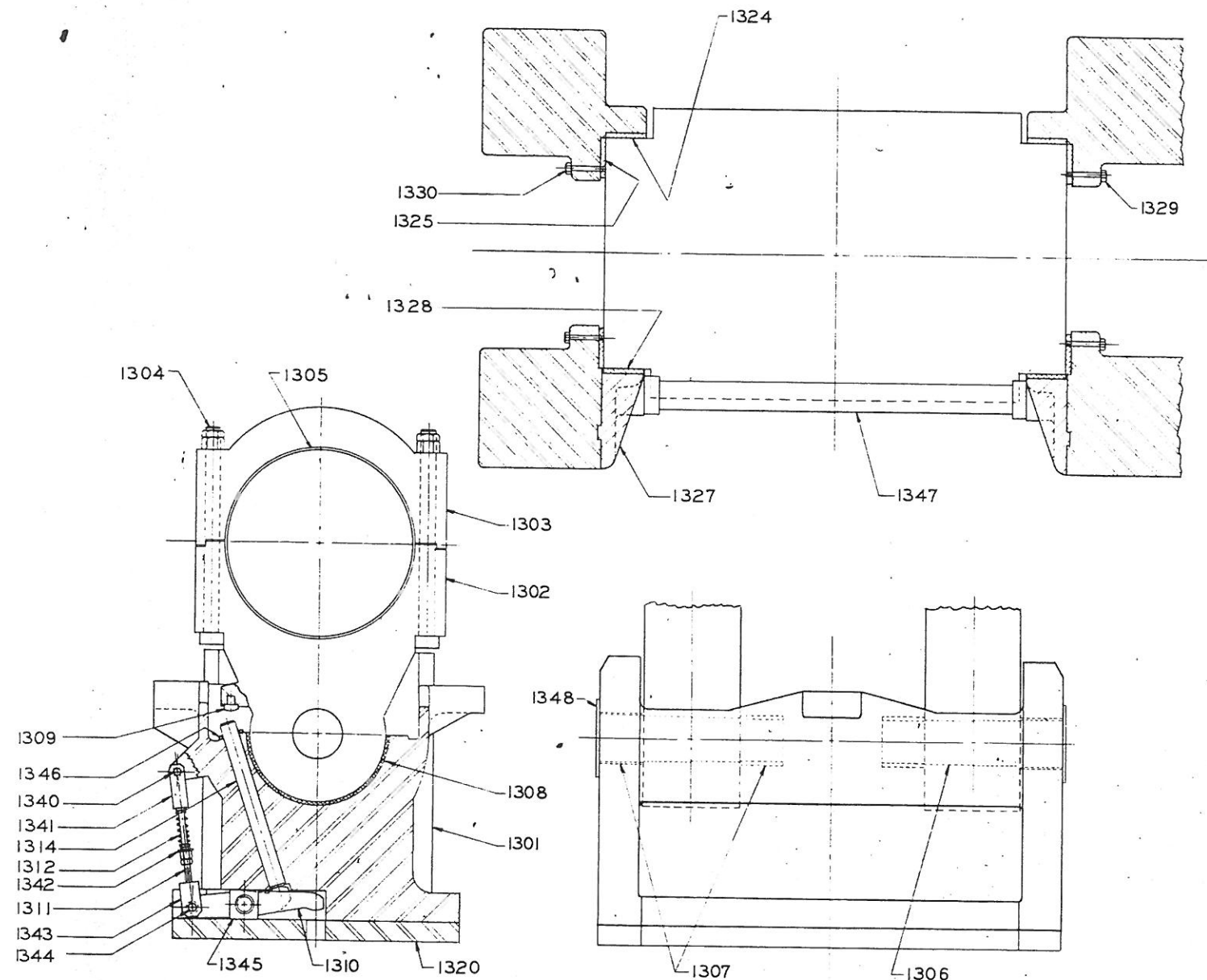
Ajax

ADJUSTMENT FOR SIDE WEAR

1. REMOVE COMPRESSION BAR (1347) AND GIBS (1327)
2. LOOSEN SCREWS (1329 & 1330) IN SIDE OF PRESS FRAME AND REMOVE LINERS (1325)
3. INSTALL SUITABLE SHIMS TO FIT BETWEEN LINER AND BED ALLOWING APPROX. .0005" PER INCH OF RAM WIDTH FOR RUNNING CLEARANCE AND REPLACE LINERS REVERSING THE ABOVE PROCEDURE.

ADJUSTMENT FOR FRONT TO BACK WEAR

4. REMOVE LINERS (1328) AND INSTALL SUITABLE SHIMS BETWEEN THEM AND FRONT GIBS (1327). ALSO REMOVE LINERS (1324) AND INSTALL SUITABLE SHIMS BETWEEN THEM AND BED. ALLOW OPERATING CLEARANCE OF APPROX. .0005" PER INCH OF RAM WIDTH.



WHEN ORDERING REPLACEMENTS, STATE SERIAL NUMBER AND SIZE STAMPED ON NAME PLATE OF MACHINE AND DESIGNATE PART BY BOTH NAME AND NUMBER.

1301	RAM	1324	FRAME REAR LINERS
1302	PITMAN	1325	FRAME SIDE LINERS
1303	PITMAN CAP	1327	FRONT GIBS - RIGHT AND LEFT HAND
1304	PITMAN BOLTS	1328	FRONT GIB LINERS
1305	PITMAN AND CRANKSHAFT BUSHING	1329	RIGHT SIDE LINER SCREWS
1306	PITMAN WRIST PIN	1330	LEFT SIDE LINER SCREWS
1307	PITMAN WRIST PIN BUSHINGS	1340	RAM SPRING ROD CLEVIS PIN
1308	RAM THRUST BUSHING	1341	RAM SPRING ROD CLEVIS
1309	PITMAN KICKER LUG INSERTS	1342	SPRING ROD SPACER
1310	UPPER KNOCKOUT LEVER	1343	UPPER KNOCKOUT LEVER SPRING ROD CLEVIS
1311	UPPER KNOCKOUT SPRING RODS	1344	UPPER KNOCKOUT LEVER SPRING ROD CLEVIS PIN
1312	UPPER KNOCKOUT SPRINGS	1345	UPPER KNOCKOUT LEVER MOUNTING BLOCKS
1314	UPPER KNOCKOUT DRIVE PINS	1346	UPPER KNOCKOUT DRIVE PIN WASHER
1320	RAM PLATE	1347	COMPRESSION BAR
		1348	PITMAN PIN COVER PLATE