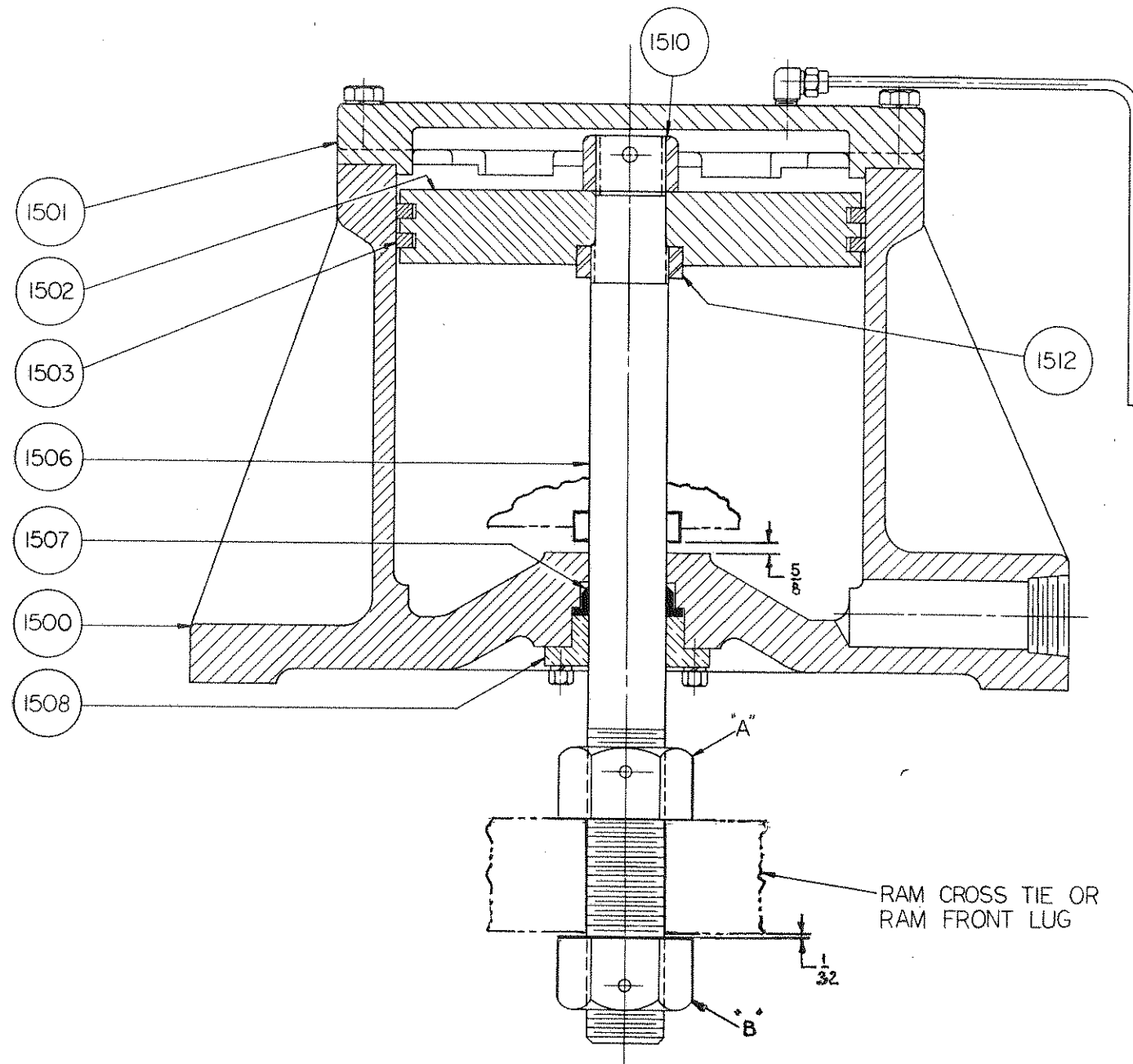


Ajax



- 1500 BALANCE CYLINDER
- 1501 BALANCE CYL. HEAD
- 1502 BALANCE CYL. PISTON
- 1503 BALANCE CYL. PISTON RINGS
- 1506 BALANCE CYL. PISTON ROD
- 1507 BALANCE CYL PISTON ROD PACKING
- 1508 BALANCE CYL PISTON ROD PACKING GLAND
- 1510 BALANCE CYL PISTON ROD NUT
- 1512 BALANCE CYL PISTON ROD SHOULDER NUT

WHEN ORDERING REPLACEMENTS,
STATE SERIAL NUMBER AND SIZE
STAMPED ON NAME PLATE OF
MACHINE, AND DESIGNATE PART BY
BOTH NAME AND NUMBER

Ajax

INSTRUCTIONS FOR ASSEMBLY OF BALANCE CYLINDER

WITH THE RAM AT BOTTOM DEAD CENTER, ASSEMBLE THE BALANCE CYLINDER PISTON ROD-(1506) TO THE RAM CROSS TIE OR RAM FRONT LUG. BACK OFF NUT "A" UNTIL BOTTOM OF PISTON 1502 OR 1512 MAKES CONTACT WITH BALANCE CYLINDER 1500. ADJUST NUT "A" RAISING PISTON UNTIL 5/8" CLEARANCE IS OBTAINED. PIN NUT "A" IN PLACE. ASSEMBLE NUT "B" TO WITHIN 1/32 OF RAM CROSS TIE BAR OR FRONT LUG & PIN IN PLACE.