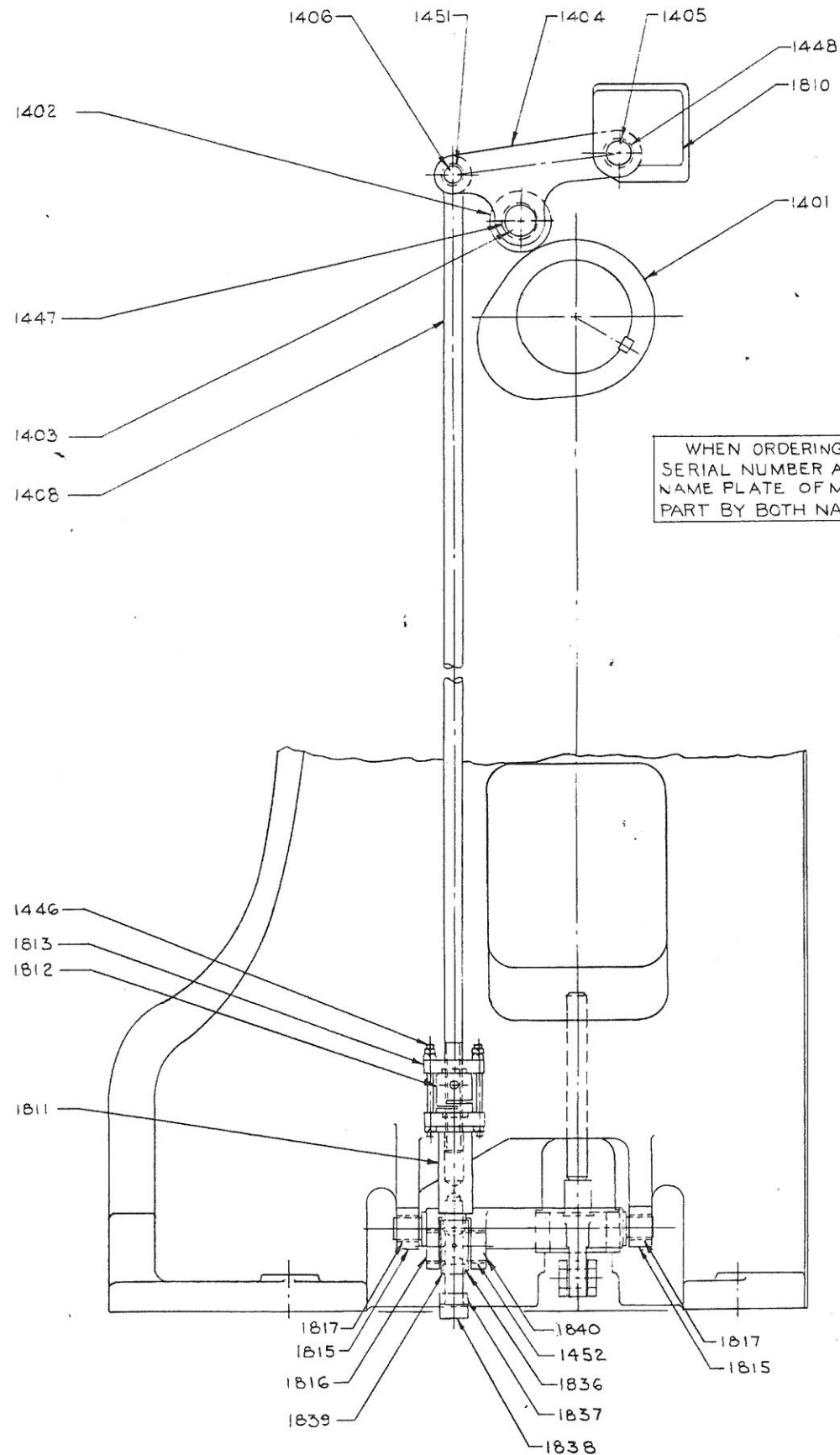


Ajax



Ajax

TO REMOVE BOTTOM KNOCKOUT MECHANISM

1. UNFASTEN LUBE LINES.
2. REMOVE KICKER PIN(S) (1419).
3. REMOVE OUTSIDE CONNECTING LINK PIN (1821).
4. REMOVE SCREWS "A" AND SLIDE OUT BOTTOM K.O. ASSEMBLY.
5. TO REPLACE THE MECHANISM, REVERSE THE ABOVE PROCEDURE.

TO ADJUST FOR SHORTER STROKE OF KICKER PIN.

1. LOOSEN NUTS ON BREAKER BOLTS (1446).
2. TURN ADJUSTING NUT (1812) TO INCREASE DISTANCE BETWEEN CLEVIS ROD BUMPER PAD (1836) AND BOTTOM OF CLEVIS (839). DURING ADJUSTMENT, THE CAM ROLLER (1402) MUST NEVER LIFT OFF FROM CAM (1401).
3. AFTER ADJUSTMENT IS MADE, TIGHTEN NUTS ON BREAKER BOLTS (1446).

| | |
|---|---|
| 1401 BOTTOM K.O. CAM | 1815 BOTTOM K.O. BELLCRANK MOUNTING BLOCKS |
| 1402 BOTTOM K.O. CAM ROLLER | 1816 BOTTOM K.O. BELLCRANK |
| 1403 BOTTOM K.O. CAM ROLLER PIN | 1817 BOTTOM K.O. BELLCRANK BUSHINGS |
| 1404 BOTTOM K.O. CAM ROLLER LEVER | 1818 BOTTOM K.O. CONNECTING LINK PIN BUSHINGS |
| 1405 BOTTOM K.O. CAM ROLLER LEVER FULCRUM PIN | 1821 BOTTOM K.O. CONNECTING LINK PIN |
| 1406 BOTTOM K.O. LIFT ROD PIN | 1822 BOTTOM K.O. LEVER LONG LINK |
| 1408 BOTTOM K.O. LIFT ROD | 1823 BOTTOM K.O. LEVER LINK BUSHINGS |
| 1417 BOTTOM K.O. LEVERS | 1824 BOTTOM K.O. LEVER LINK PINS |
| 1418 BOTTOM K.O. LEVER BRACKET PINS | 1826 BOTTOM K.O. LEVER BRACKET |
| 1419 BOTTOM K.O. KICKER PIN(S) | 1829 BOTTOM K.O. LIFT BEAM |
| 1446 BOTTOM K.O. BREAKER BOLTS | 1830 BOTTOM K.O. LIFT BEAM PILLOW BLOCKS |
| 1447 BOTTOM K.O. CAM ROLLER BUSHING | 1831 BOTTOM K.O. LIFT BEAM PILLOW BLOCK PINS |
| 1448 BOTTOM K.O. CAM ROLLER LEVER BUSHING | 1832 BOTTOM K.O. LEVER BUSHINGS |
| 1450 BOTTOM K.O. LEVER BUSHINGS | 1836 BOTTOM K.O. CLEVIS BUSHING |
| 1451 BOTTOM K.O. LIFT ROD EYE BUSHING | 1837 BOTTOM K.O. CLEVIS ROD BUMPER PAD |
| 1452 BOTTOM K.O. LIFT ROD CLEVIS BUSHINGS | 1838 BOTTOM K.O. CLEVIS ROD |
| 1810 BOTTOM K.O. CAM ROLLER LEVER SUPPORT | 1839 BOTTOM K.O. CLEVIS |
| 1811 BOTTOM K.O. ADJUSTING SLEEVE | 1840 BOTTOM K.O. CLEVIS PIN |
| 1812 BOTTOM K.O. ADJUSTING NUT | 1841 BOTTOM K.O. CONNECTING LINKS |
| 1813 BOTTOM K.O. ADJUSTING NUT CAP | |

