

Ajax

Ajax

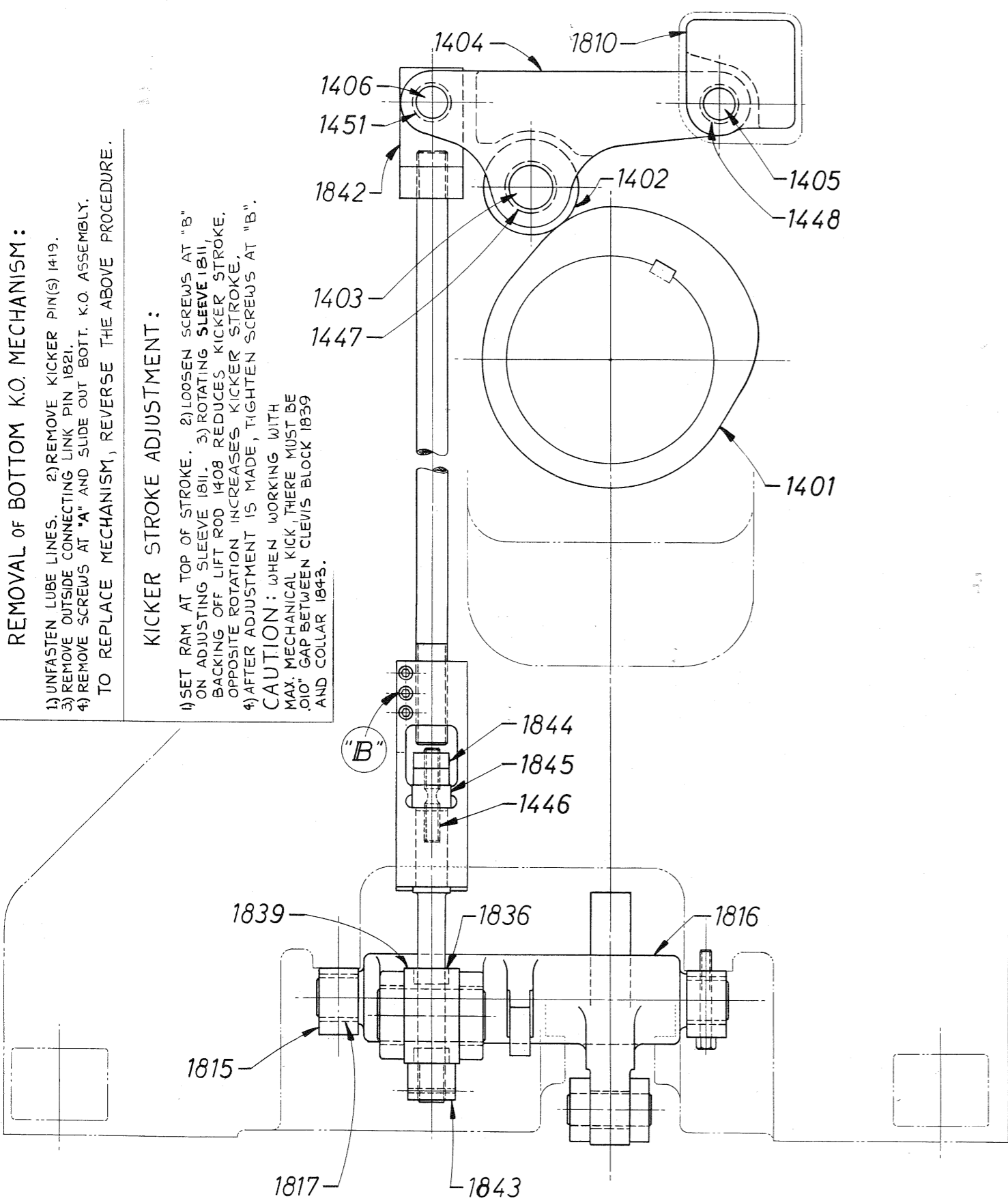
WHEN ORDERING REPLACEMENTS, STATE SERIAL NUMBER AND SIZE STAMPED ON NAME PLATE OF MACHINE AND DESIGNATE PART BY BOTH NAME AND NUMBER

REMOVAL OF BOTTOM K.O. MECHANISM:

- 1) UNFASTEN LUBE LINES.
 - 2) REMOVE KICKER PIN(S) 1419.
 - 3) REMOVE OUTSIDE CONNECTING LINK PIN 1821.
 - 4) REMOVE SCREWS AT "A" AND SLIDE OUT BOT. K.O. ASSEMBLY.
- TO REPLACE MECHANISM, REVERSE THE ABOVE PROCEDURE.

KICKER STROKE ADJUSTMENT:

- 1) SET RAM AT TOP OF STROKE.
 - 2) LOOSEN SCREWS AT "B" ON ADJUSTING SLEEVE 1811.
 - 3) ROTATING SLEEVE 1811, BACKING OFF LIFT ROD 1408 REDUCES KICKER STROKE.
 - 4) OPPOSITE ROTATION INCREASES KICKER STROKE.
- AFTER ADJUSTMENT IS MADE, TIGHTEN SCREWS AT "B".
- CAUTION:** WHEN WORKING WITH MAX. MECHANICAL KICK, THERE MUST BE .010" GAP BETWEEN CLEVIS BLOCK 1839 AND COLLAR 1843.



- | | |
|---------------------------------------|-------------------------------------|
| 1401 CAM | 1817 BUSHING FOR BELLCRANK (2) |
| 1402 ROLLER FOR CAM | 1818 BUSHING FOR CONN. LINK PIN (2) |
| 1403 PIN FOR CAM ROLLER | 1821 PIN FOR CONN. LINK (2) |
| 1404 LEVER FOR CAM ROLLER | 1822 LONG LINK |
| 1405 PIN FOR CAM ROLLER LEVER | 1823 BUSHING FOR LONG LINK PIN (2) |
| 1406 PIN FOR LIFT ROD EYE | 1824 PIN FOR LONG LINK (2) |
| 1408 LIFT ROD | 1826 BRACKET FOR LIFT BEAM LVR |
| 1417 LEVER FOR LIFT BEAM (2) | 1829 LIFT BEAM |
| 1418 PIN FOR LIFT BEAM LVR (2) | 1831 PIN FOR LIFT BEAM (2) |
| 1419 KICKER PIN(S) | 1832 BUSHING FOR LIFT BEAM PIN (4) |
| 1446 BREAKER BOLT | 1836 BUSHING FOR CLEVIS ROD (2) |
| 1447 BUSHING FOR CAM ROLLER PIN. | 1838 CLEVIS ROD |
| 1448 BUSHING FOR CAM ROLLER LEVER PIN | 1839 CLEVIS BLOCK |
| 1450 BUSHING FOR LIFT BEAM LVR (4) | 1840 CLEVIS PIN |
| 1451 BUSHING FOR LIFT ROD PIN | 1841 CONNECTING LINK |
| 1452 BUSHING FOR CLEVIS PIN (2) | 1842 EYE FOR LIFT ROD |
| 1810 SUPPORT FOR CAM ROLLER LEVER | 1843 COLLAR FOR CLEVIS ROD |
| 1811 ADJUSTING SLEEVE | 1844 NUT FOR BREAKER BOLT (2) |
| 1815 MOUNTING BLOCK (2) | 1845 SPACER FOR BREAKER BOLT |
| 1816 BELLCRANK | |

