

PK-10D  
BOTTOM K.O.  
PARTS & INSTRUCTIONS

REMOVAL OF BOTTOM K.O. MECHANISM

1. UNFASTEN LUBE LINES
2. REMOVE KICKER PIN 1419
3. REMOVE LINK PIN AT BELLCRANK 1847(1)
4. REMOVE SCREWS AT 'A'
5. SLIDE OUT BOTTOM K.O. ASSEMBLY

NOTE:

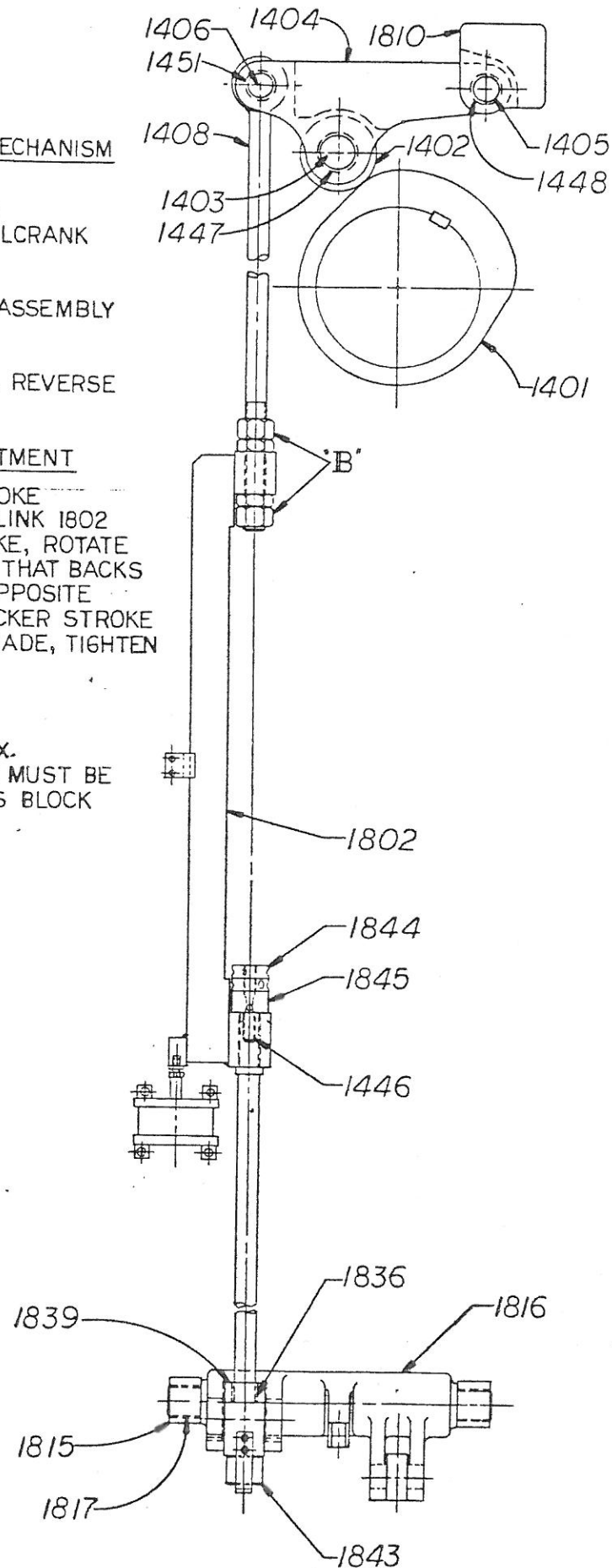
TO REPLACE MECHANISM, REVERSE THE ABOVE PROCEDURE

KICKER STROKE ADJUSTMENT

1. SET RAM AT TOP OF STROKE
2. LOOSEN NUTS AT 'B' ON LINK 1802
3. TO REDUCE KICKER STROKE, ROTATE NUTS IN THE DIRECTION THAT BACKS OUT LIFT ROD 1408—OPPOSITE ROTATION INCREASES KICKER STROKE
4. AFTER ADJUSTMENT IS MADE, TIGHTEN NUTS AT 'B'

CAUTION

WHEN WORKING WITH MAX. MECHANICAL KICK, THERE MUST BE .010 GAP BETWEEN CLEVIS BLOCK 1839 AND COLLAR 1843



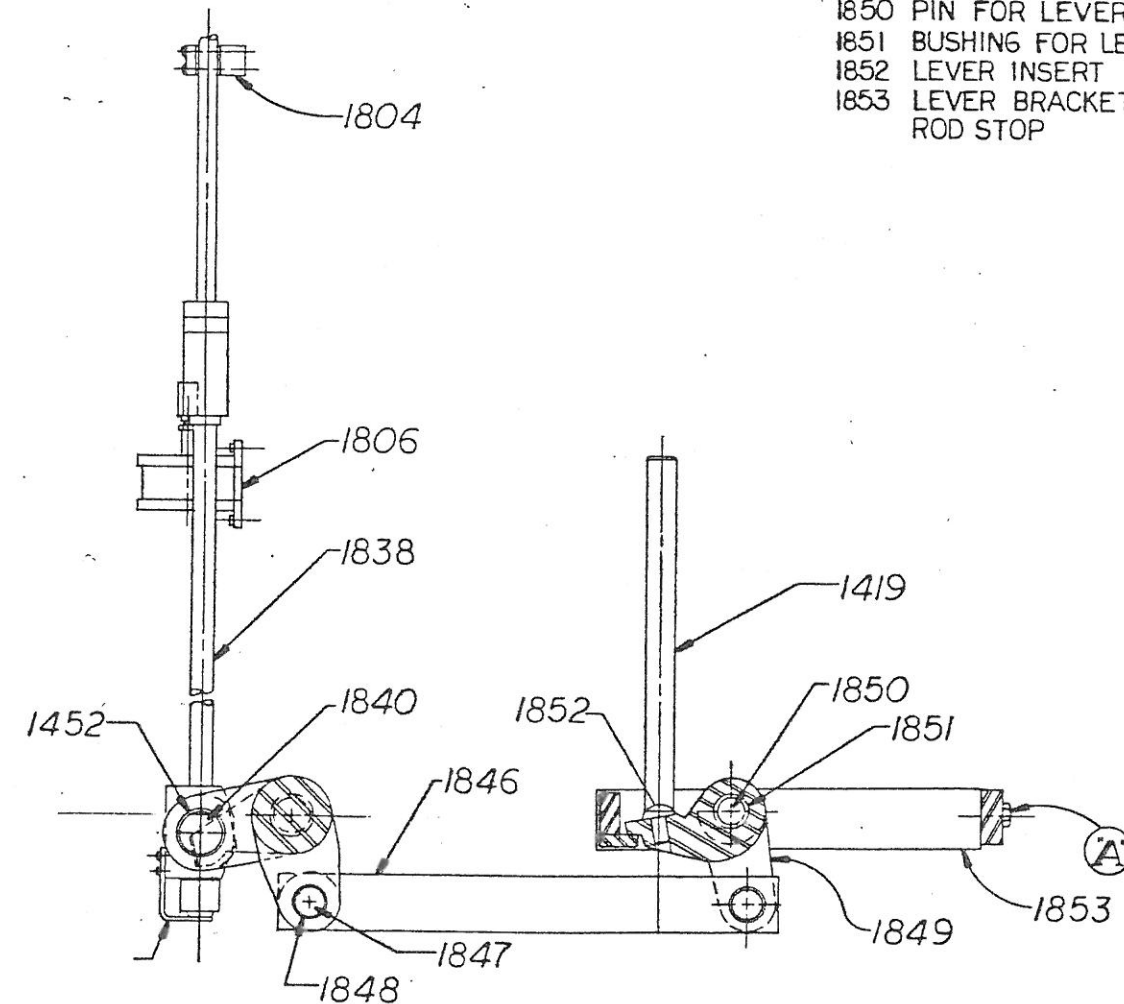
THE AJAX MANUFACTURING COMPANY  
CLEVELAND, OHIO 44117

# Ajax

WHEN ORDERING REPLACEMENTS, STATE SERIAL NUMBER AND SIZE STAMPED ON NAME PLATE OF MACHINE AND DESIGNATE PART BY BOTH NAME AND NUMBER

- 1401 CAM
- 1402 ROLLER FOR CAM
- 1403 PIN FOR CAM ROLLER
- 1404 LEVER FOR CAM ROLLER
- 1405 PIN FOR CAM ROLLER LEVER
- 1406 PIN FOR LIFT ROD EYE
- 1408 LIFT ROD
- 1419 KICKER PIN
- 1446 BREAKER BOLT
- 1447 BUSHING FOR CAM ROLLER PIN
- 1448 BUSHING FOR CAM ROLLER LEVER PIN
- 1451 BUSHING FOR LIFT ROD PIN
- 1452 BUSHING FOR CLEVIS PIN
- 1802 BOTTOM K O OFFSET LINK
- 1804 BOTTOM K O LINK GUIDE
- 1806 BOTTOM K O DELAY CYLINDER

- 1810 SUPPORT FOR CAM ROLLER LEVER
- 1811 ADJUSTING SLEEVE
- 1815 MOUNTING BLOCK (2)
- 1816 BELLCRANK
- 1817 BUSHING FOR BELLCRANK (2)
- 1836 BUSHING FOR CLEVIS ROD (2)
- 1838 CLEVIS ROD
- 1839 CLEVIS BLOCK
- 1840 CLEVIS PIN
- 1843 COLLAR FOR CLEVIS ROD
- 1844 NUT FOR BREAKER BOLT (2)
- 1845 SPACER FOR BREAKER BOLT
- 1846 LINK
- 1847 PIN FOR LINK (2)
- 1848 BUSHING FOR LINK PIN (2)
- 1849 LEVER
- 1850 PIN FOR LEVER
- 1851 BUSHING FOR LEVER
- 1852 LEVER INSERT
- 1853 LEVER BRACKET ROD STOP



THE AJAX MANUFACTURING COMPANY  
CLEVELAND, OHIO 44117