

PK-10E
BOTTOM K.O.
PARTS & INSTRUCTIONS

REMOVAL OF BOTTOM K.O. MECHANISM

1. UNFASTEN LUBE LINES
2. REMOVE KICKER PIN 1419
3. REMOVE LINK PIN AT BELLCRANK 1821 (1)
4. REMOVE SCREWS AT "A"
5. SLIDE OUT BOTTOM K.O. ASSEMBLY

NOTE:

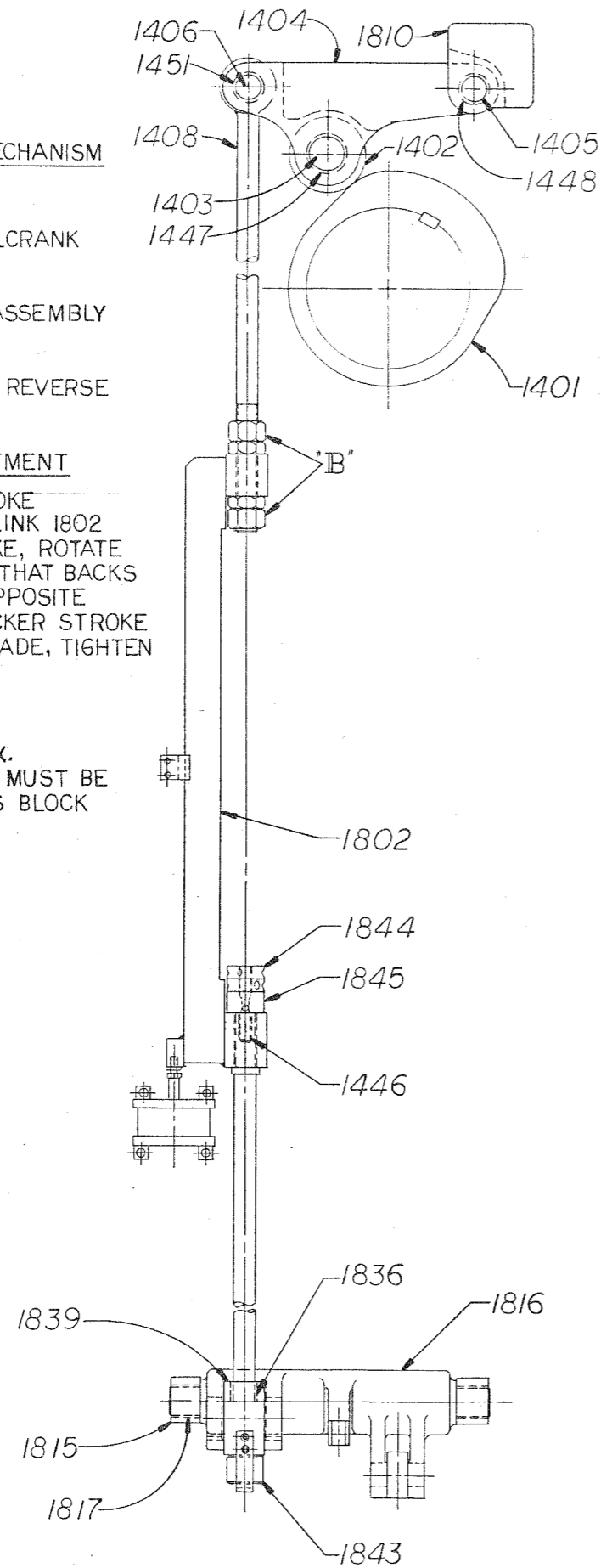
TO REPLACE MECHANISM, REVERSE THE ABOVE PROCEDURE

KICKER STROKE ADJUSTMENT

1. SET RAM AT TOP OF STROKE
2. LOOSEN NUTS AT "B" ON LINK 1802
3. TO REDUCE KICKER STROKE, ROTATE NUTS IN THE DIRECTION THAT BACKS OUT LIFT ROD 1408—OPPOSITE ROTATION INCREASES KICKER STROKE
4. AFTER ADJUSTMENT IS MADE, TIGHTEN NUTS AT "B"

CAUTION

WHEN WORKING WITH MAX. MECHANICAL KICK, THERE MUST BE .010 GAP BETWEEN CLEVIS BLOCK 1839 AND COLLAR 1843

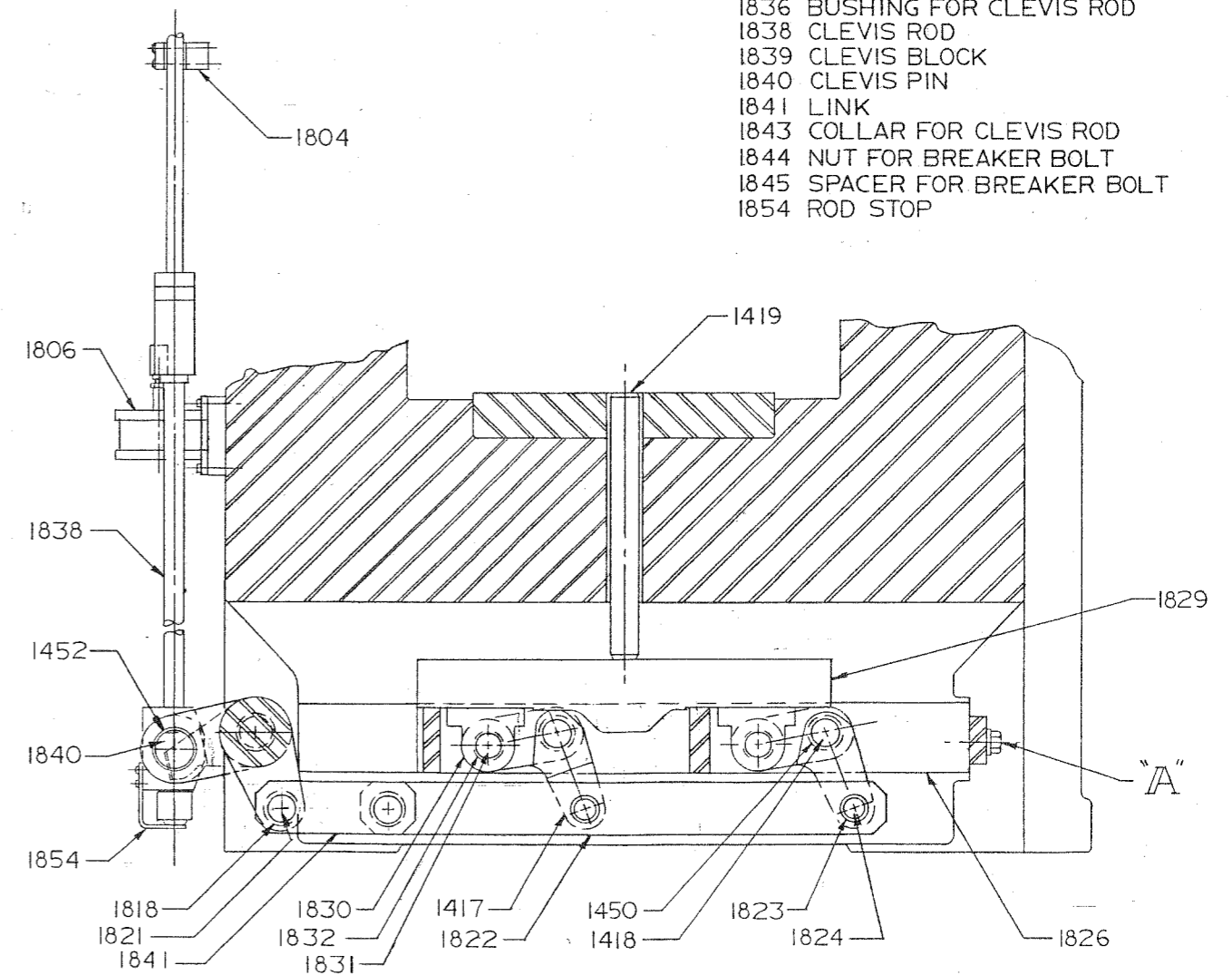


THE AJAX MANUFACTURING COMPANY
CLEVELAND, OHIO 44117

Ajax

WHEN ORDERING REPLACEMENTS, STATE SERIAL NUMBER AND SIZE STAMPED ON NAME PLATE OF MACHINE AND DESIGNATE PART BY BOTH NAME AND NUMBER

- | | |
|---------------------------------------|-----------------------------------|
| 1401 CAM | 1802 OFFSET LINK |
| 1402 ROLLER FOR CAM | 1804 LINK GUIDE |
| 1403 PIN FOR CAM ROLLER | 1806 DELAY CYLINDER |
| 1404 LEVER FOR CAM ROLLER | 1810 SUPPORT FOR CAM ROLLER LEVER |
| 1405 PIN FOR CAM ROLLER LEVER | 1815 MOUNTING BLOCK |
| 1406 PIN FOR LIFT ROD EYE | 1816 BELLCRANK |
| 1408 LIFT ROD | 1817 BUSHING FOR BELLCRANK |
| 1417 LEVERS | 1818 BUSHING FOR LINK PIN |
| 1418 LEVER BRACKET PINS | 1821 LINK PIN |
| 1419 KICKER PIN | 1822 LEVER LONG LINK |
| 1446 BREAKER BOLT | 1823 BUSHING FOR LEVER LINK |
| 1447 BUSHING FOR CAM ROLLER PIN | 1824 PIN FOR LEVER LINK |
| 1448 BUSHING FOR CAM ROLLER LEVER PIN | 1826 LEVER BRACKET |
| 1450 BUSHING FOR LEVER | 1829 LIFT BEAM |
| 1451 BUSHING FOR LIFT ROD PIN | 1830 PILLOW BLOCK FOR LIFT BEAM |
| 1452 BUSHING FOR CLEVIS PIN | 1831 PIN FOR PILLOW BLOCK |
| | 1832 BUSHING FOR LEVER |
| | 1836 BUSHING FOR CLEVIS ROD |
| | 1838 CLEVIS ROD |
| | 1839 CLEVIS BLOCK |
| | 1840 CLEVIS PIN |
| | 1841 LINK |
| | 1843 COLLAR FOR CLEVIS ROD |
| | 1844 NUT FOR BREAKER BOLT |
| | 1845 SPACER FOR BREAKER BOLT |
| | 1854 ROD STOP |



THE AJAX MANUFACTURING COMPANY
CLEVELAND, OHIO 44117