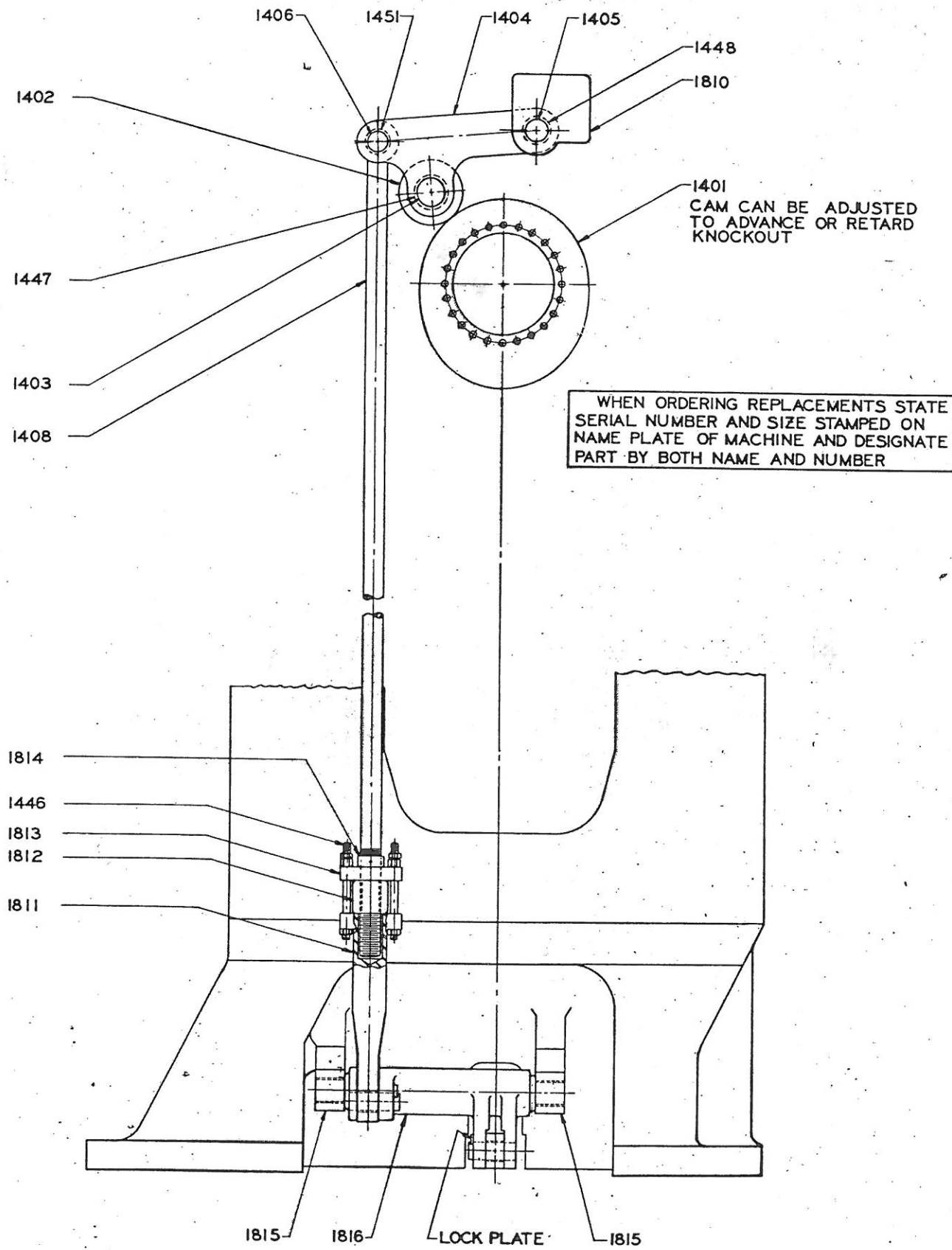


Ajax



Ajax

TO REMOVE BOTTOM KNOCKOUT MECHANISM

1. UNFASTEN LUBE LINES.
2. REMOVE KICKER PIN(S) (1419).
3. REMOVE LOCKPLATE FROM BELLCRANK LINK PIN (1819), AND REMOVE PIN.
4. REMOVE SCREWS "A" AND SLIDE OUT BOTTOM K.O. ASSEMBLY.
5. TO REPLACE THE MECHANISM, REVERSE THE ABOVE PROCEDURE.

TO ADJUST FOR SHORTER STROKE OF KICKER PIN.

1. LOOSEN NUTS ON BREAKER BOLTS (1446).
2. TURN ADJUSTING NUT (1812) TO INCREASE DISTANCE BETWEEN LIFT ROD STOP SLEEVE (1814) AND ADJ. NUT CAP (1813). THE CAM ROLLER (1402) MUST NEVER LIFT OFF OF THE CAM (1401).
3. AFTER ADJUSTMENT IS MADE, TIGHTEN NUTS ON BREAKER BOLTS (1446).

1401	BOTTOM K.O. CAM	1814	BOTTOM K.O. LIFT ROD STOP SLEEVE
1402	BOTTOM K.O. CAM ROLLER	1815	BOTTOM K.O. BELLCRANK MOUNTING BLOCKS
1403	BOTTOM K.O. CAM ROLLER PIN	1816	BOTTOM K.O. BELLCRANK
1404	BOTTOM K.O. CAM ROLLER LEVER	1817	BOTTOM K.O. BELLCRANK BUSHINGS
1405	BOTTOM K.O. CAM ROLLER LEVER FULCRUM PIN	1818	BOTTOM K.O. BELLCRANK LINK BUSHING
1406	BOTTOM K.O. LIFT ROD PIN	1819	BOTTOM K.O. BELLCRANK LINK PIN
1408	BOTTOM K.O. LIFT ROD	1820	BOTTOM K.O. CONNECTING LINK
1410	BOTTOM K.O. LIFT ROD CLEVIS PIN	1821	BOTTOM K.O. CONNECTING LINK PIN
1417	BOTTOM K.O. LEVERS	1822	BOTTOM K.O. LONG LINK FOR K.O. LEVERS
1418	BOTTOM K.O. LEVER FULCRUM PINS	1823	BOTTOM K.O. LEVER LINK BUSHINGS
1419	BOTTOM K.O. KICKER PIN(S)	1824	BOTTOM K.O. LEVER LINK PINS
1446	BOTTOM K.O. BREAKER BOLTS	1826	BOTTOM K.O. LEVER BRACKET
1447	BOTTOM K.O. CAM ROLLER BUSHING	1827	BOTTOM K.O. PIN GUIDE(S) (UPPER)
1448	BOTTOM K.O. CAM ROLLER LEVER BUSHING	1828	BOTTOM K.O. PIN GUIDE(S) (LOWER)
1450	BOTTOM K.O. LEVER FULCRUM PIN BUSHINGS	1829	BOTTOM K.O. LIFT BEAM
1451	BOTTOM K.O. LIFT ROD EYE BUSHING	1830	BOTTOM K.O. LIFT BEAM PILLOW BLOCKS
1452	BOTTOM K.O. LIFT ROD CLEVIS PIN BUSHING	1831	BOTTOM K.O. PINS FOR LIFT BEAM PILLOW BLOCKS
1810	BOTTOM K.O. CAM ROLLER LEVER SUPPORT	1832	BOTTOM K.O. BUSHINGS FOR PILLOW BLOCK PINS
1811	BOTTOM K.O. ADJUSTING SLEEVE	1833	BOTTOM K.O. CONN. LINK BUMPER PADS
1812	BOTTOM K.O. ADJUSTING NUT	1834	BOTTOM K.O. CONN. LINK SLIDING BLOCKS
1813	BOTTOM K.O. ADJUSTING NUT CAP	1835	BOTTOM K.O. CONN. LINK SLIDING BLOCK RETAINER PLATES

