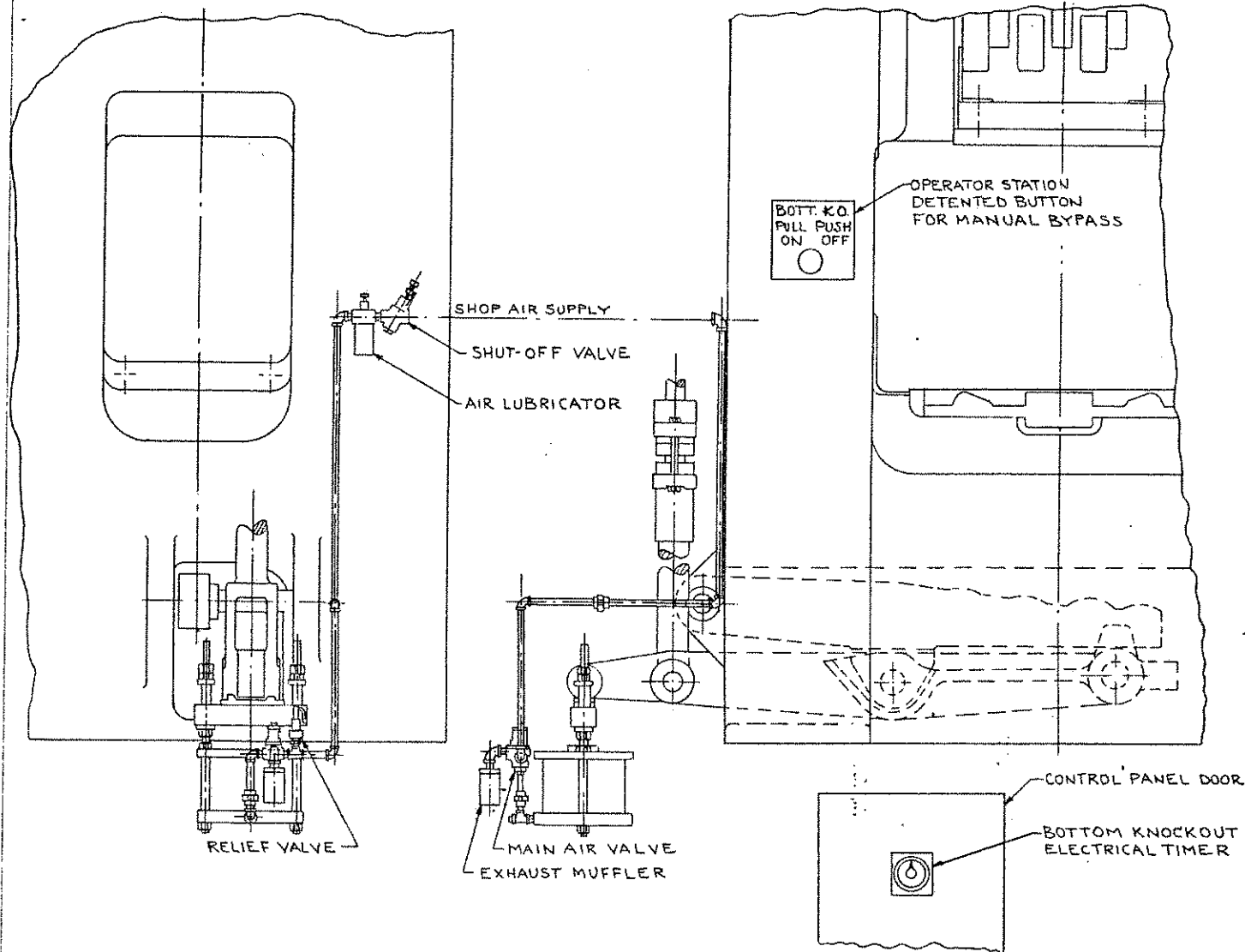


AJAX

AJAX

SHEET-PK3C



OPERATOR STATION  
DETENTED BUTTON  
FOR MANUAL BYPASS

SHOP AIR SUPPLY  
SHUT-OFF VALVE  
AIR LUBRICATOR

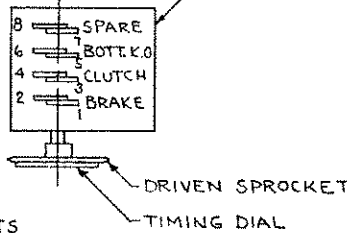
RELIEF VALVE

MAIN AIR VALVE  
EXHAUST MUFFLER

CONTROL PANEL DOOR

BOTTOM KNOCKOUT  
ELECTRICAL TIMER

ROTARY CAM SWITCH



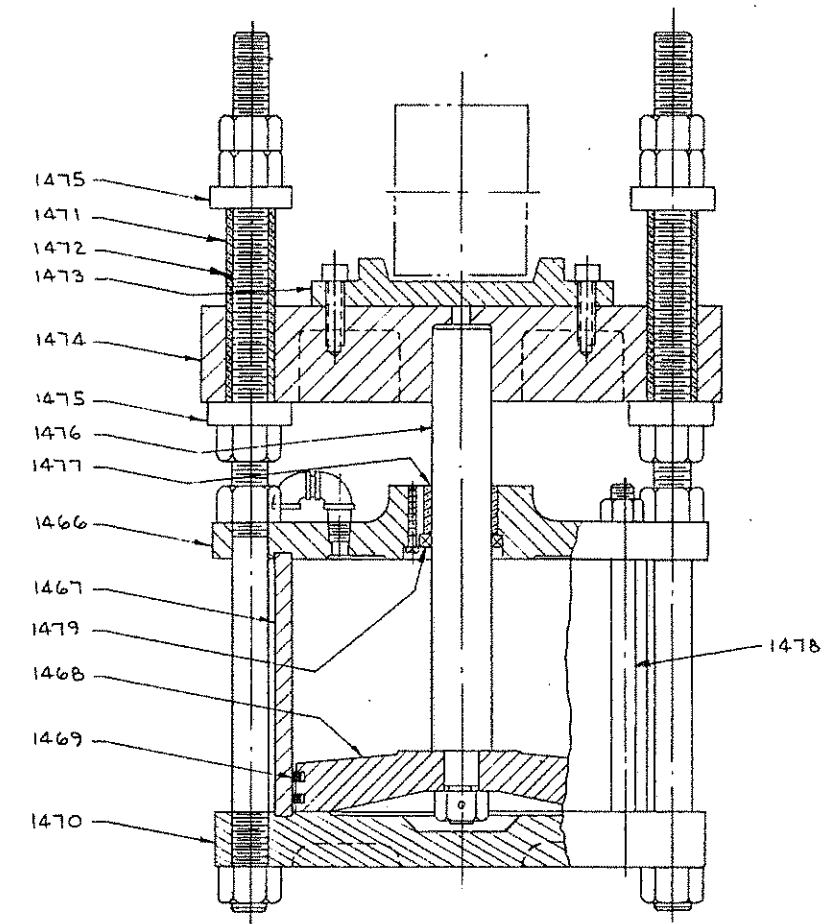
DRIVEN SPROCKET  
TIMING DIAL

CAM 5 OF THE ROTARY CAM SWITCH ENERGIZES AND CAM 6 DE-ENERGIZES THE ELECTRIC TIMER. THE ZERO DEGREE MARK OF THE TIMING DIAL IN TOP POSITION REPRESENTS THE RAM TOP DEAD CENTER POSITION. FOR INITIAL SETTING OF THE BOTTOM KNOCK-OUT TIMING, ROTATE THE 180 DEGREE MARK TO TOP POSITION, LOOSEN CAM 5, AND ROTATE IT CLOCKWISE UNTIL THE CONTACT JUST CLOSSES. TIGHTEN CAM 5. ROTATE THE 270 DEGREE MARK TO TOP POSITION. LOOSEN CAM 6 AND ROTATE IT IN A COUNTER-CLOCKWISE DIRECTION UNTIL THE CONTACT JUST OPENS, TIGHTEN CAM 6. TO ADVANCE BOTTOM KNOCKOUT TIMING, LOOSEN CAMS 5 AND 6 AND ROTATE THEM EQUAL AMOUNTS IN A CLOCKWISE DIRECTION. TO DELAY TIMING ROTATE BOTH CAMS EQUAL AMOUNTS IN A COUNTER CLOCKWISE DIRECTION. TIGHTEN BOTH CAMS.

THE ELECTRIC TIMER HAS A MINIMUM TIME DWELL SETTING OF ONE SECOND AND TIME DIVISIONS OF ONE-HALF SECOND. WHEN THE TIMER IS ENERGIZED BY CAM 5 OF THE ROTARY CAM SWITCH, IT ENERGIZES THE MAIN AIR VALVE AND IT OPENS AND PASSES AIR TO THE CYLINDER. ITS ROD EXTENDS THE WEAR PLATE (ITEM 1473) TO SUPPORT THE BOTTOM KNOCKOUT OPERATING LEVER. AFTER THE SELECTED TIME DELAY, THE TIMER DE-ENERGIZES THE MAIN AIR VALVE. IT EXHAUSTS THE CYLINDER AIR, RELEASING THE BOTTOM KNOCKOUT OPERATING LEVER.

A DETENTED PUSHBUTTON CAN BE PUSHED IN TO LOCK OUT THE TIMER AND TO DIRECTLY ENERGIZE THE MAIN AIR VALVE. TO DE-ENERGIZE THE MAIN VALVE AND TO RELEASE THE OPERATING LEVER, THE PUSHBUTTON IS PULLED OUT TO A SECOND DETENTED POSITION.

THE AJAX MANUFACTURING CO.  
CLEVELAND, OHIO, 44117



WHEN ORDERING REPLACEMENTS, STATE SERIAL NUMBER AND SIZE STAMPED ON NAMEPLATE OF MACHINE AND DESIGNATE PART BY BOTH NAME AND NUMBER.

- 1466 TOP CYLINDER HEAD
- 1467 AIR CYLINDER
- 1468 PISTON
- 1469 PISTON RINGS
- 1470 BOTTOM CYLINDER HEAD
- 1471 GUIDE BUSHING
- 1472 GUIDE STUDS
- 1473 WEAR PLATE
- 1474 TIE BAR
- 1475 STOP COLLAR
- 1476 PISTON ROD
- 1477 PISTON ROD BUSHING
- 1478 STUDS
- 1479 OIL SEAL

THE AJAX MANUFACTURING CO.  
CLEVELAND, OHIO, 44117