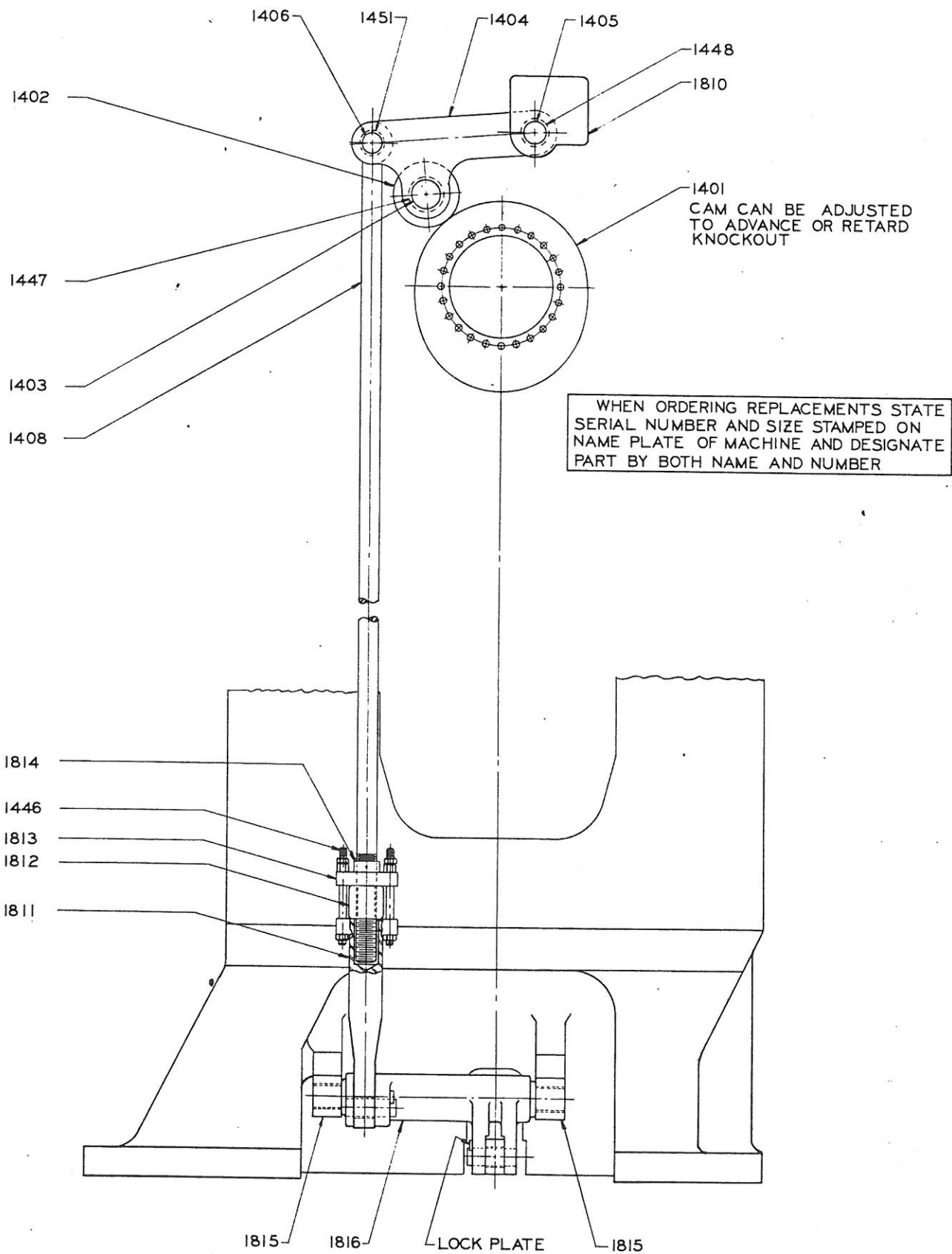


Ajax



THE AJAX MANUFACTURING COMPANY
CLEVELAND, OHIO 44117

Ajax

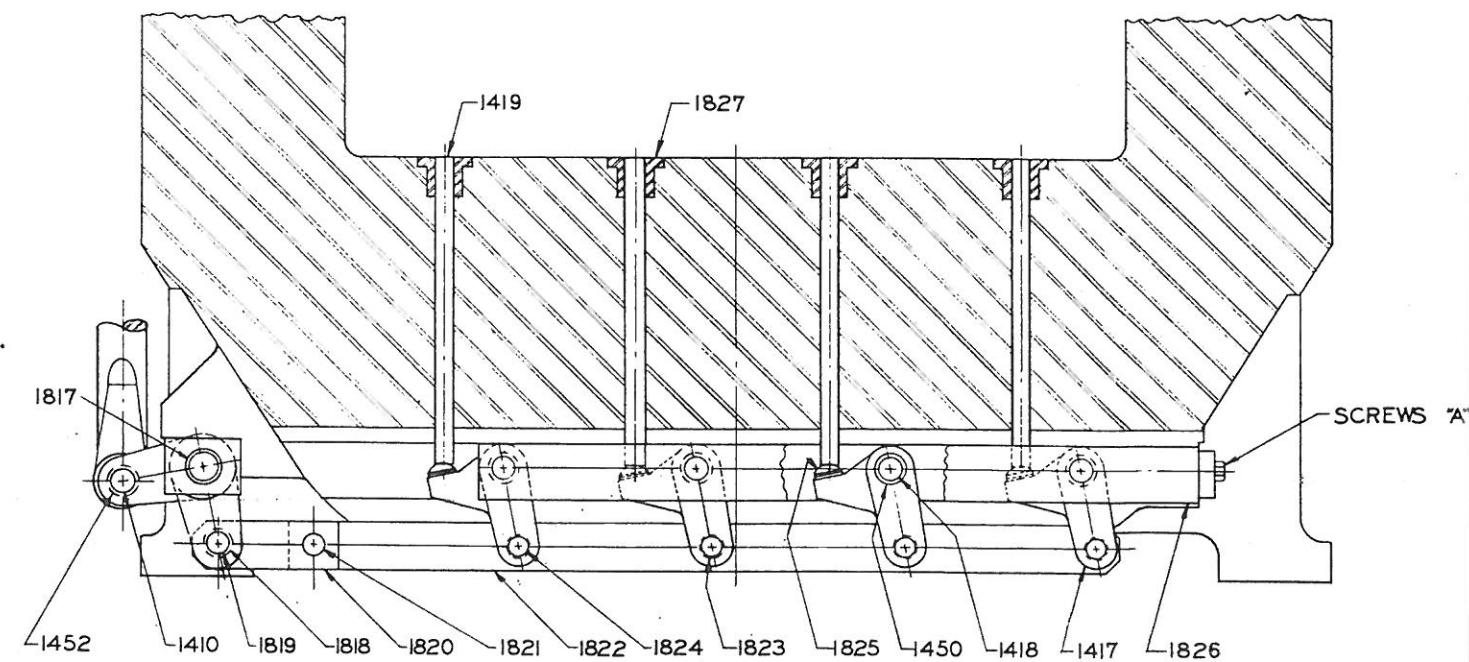
TO REMOVE BOTTOM K.O. MECHANISM

1. UNFASTEN LUBE LINES.
2. REMOVE KICKER PINS (1419).
3. REMOVE LOCKPLATE FROM BELLCRANK LINK PIN (1819) AND REMOVE PIN.
4. REMOVE SCREWS "A" AND SLIDE OUT BOTTOM K.O. ASSEMBLY.
5. TO REPLACE MECHANISM, REVERSE THE ABOVE PROCEDURE.

TO ADJUST FOR SHORTER STROKE OF KICKER PIN

1. LOOSEN NUTS ON BREAKER BOLTS (1446).
2. TURN ADJUSTING NUT (1812) TO INCREASE DISTANCE BETWEEN ADJUSTING SLEEVE (1811) AND STOP SLEEVE (1814).
3. AFTER ADJUSTMENT IS MADE, TIGHTEN NUTS ON BREAKER BOLTS (1446).

1401	BOTTOM K.O. CAM	1810	BOTTOM K.O. CAM ROLLER LEVER SUPPORT
1402	BOTTOM K.O. CAM ROLLER	1811	BOTTOM K.O. ADJUSTING SLEEVE
1403	BOTTOM K.O. CAM ROLLER PIN	1812	BOTTOM K.O. ADJUSTING NUT
1404	BOTTOM K.O. CAM ROLLER LEVER	1813	BOTTOM K.O. ADJUSTING NUT CAP
1405	BOTTOM K.O. CAM ROLLER LEVER FULCRUM PIN	1814	BOTTOM K.O. LIFT ROD STOP SLEEVE
1406	BOTTOM K.O. LIFT ROD PIN	1815	BOTTOM K.O. BELLCRANK MOUNTING BLOCKS
1408	BOTTOM K.O. LIFT ROD	1816	BOTTOM K.O. BELLCRANK
1410	BOTTOM K.O. LIFT ROD CLEVIS PIN	1817	BOTTOM K.O. BELLCRANK BUSHINGS
1417	BOTTOM K.O. LEVERS	1818	BOTTOM K.O. BELLCRANK LINK BUSHING
1418	BOTTOM K.O. LEVER FULCRUM PINS	1819	BOTTOM K.O. BELLCRANK LINK PIN
1419	BOTTOM K.O. KICKER PINS	1820	BOTTOM K.O. CONNECTING LINK
1446	BOTTOM K.O. BREAKER BOLTS	1821	BOTTOM K.O. CONNECTING LINK PIN
1447	BOTTOM K.O. CAM ROLLER BUSHING	1822	BOTTOM K.O. LONG LINK FOR K.O. LEVERS
1448	BOTTOM K.O. CAM ROLLER LEVER BUSHING	1823	BOTTOM K.O. LEVER LINK BUSHINGS
1450	BOTTOM K.O. LEVER FULCRUM PIN BUSHINGS	1824	BOTTOM K.O. LEVER LINK PINS
1451	BOTTOM K.O. LIFT ROD EYE BUSHING	1825	BOTTOM K.O. LEVER INSERTS
1452	BOTTOM K.O. LIFT ROD CLEVIS PIN BUSHING	1826	BOTTOM K.O. LEVER BRACKET
		1827	BOTTOM KO PIN GUIDES



THE AJAX MANUFACTURING COMPANY
CLEVELAND, OHIO 44117