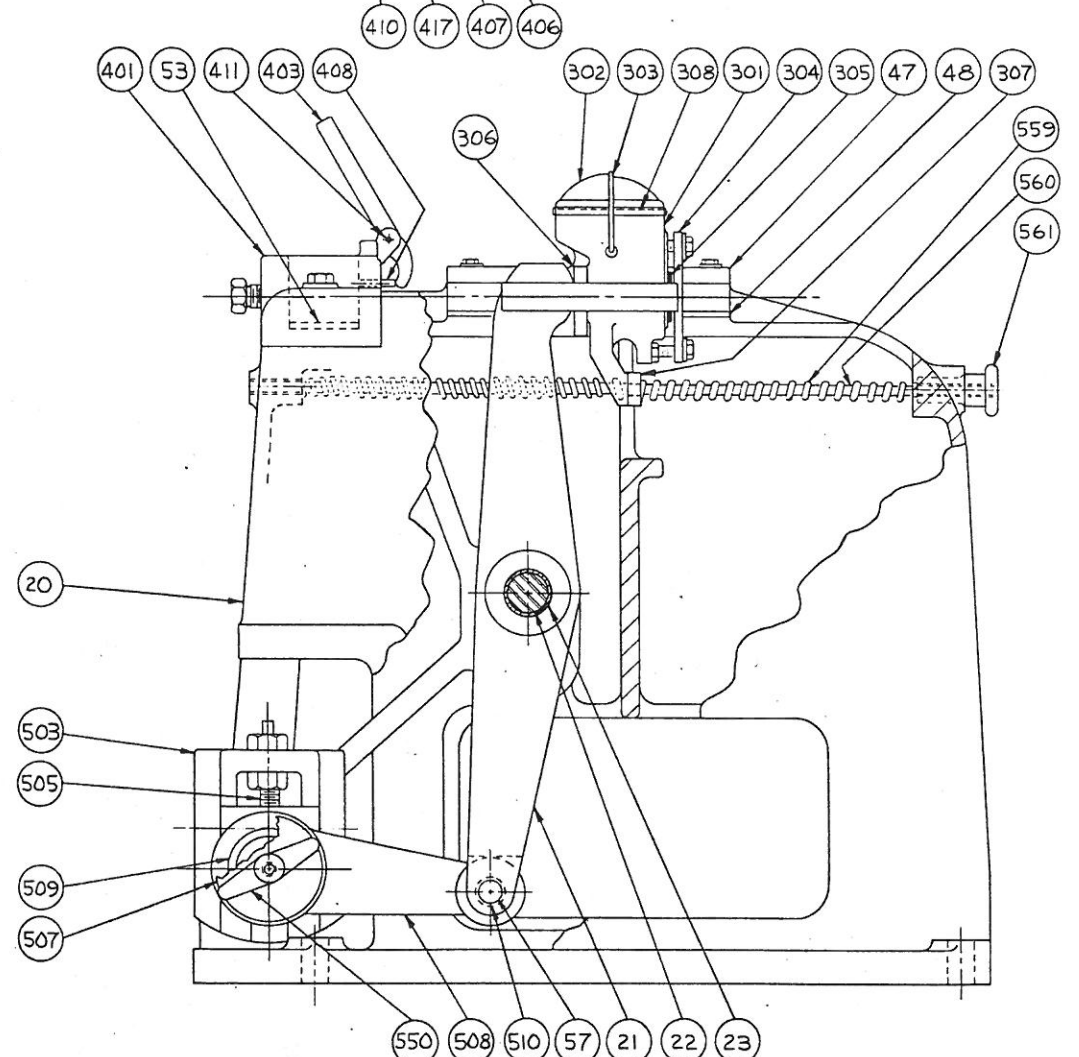
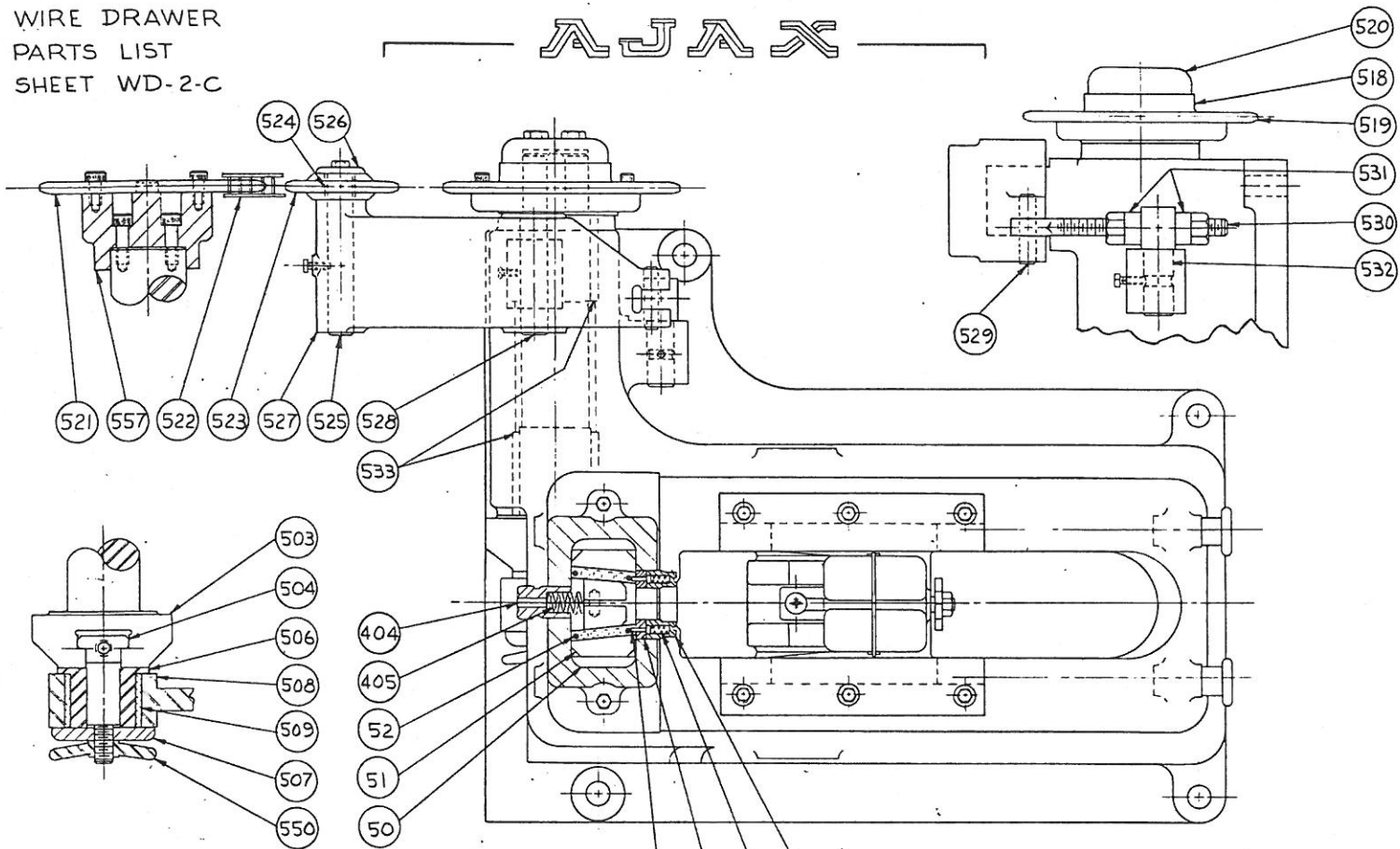


AJAX



THE AJAX MANUFACTURING COMPANY
CLEVELAND, OHIO 44117

AJAX

20	BASE	520	SPROCKET RETAINER WASHER
21	DRAWING ARM	521	DRIVING SPROCKET
22	DRAWING ARM FULCRUM PIN	522	ROLLER CHAIN
23	DRAWING ARM FULCRUM PIN BUSHINGS	523	IDLER ROLLER SPROCKET
47	COVER PLATES FOR SLIDES	524	IDLER ROLLER BEARING
48	LINERS FOR BASE	525	IDLER ROLLER PIN
50	BACKING BLOCKS FOR GRIP	526	IDLER ROLLER RETAINING CAP
51	STATIONARY WEDGE BLOCKS FOR GRIP	527	IDLER ARM
52	ROLLER CAGES	528	IDLER ARM FULCRUM PIN
53	BOTTOM LINER FOR GRIP BOX	529	EYE BOLT LINK PIN
57	PIN - PITMAN TO DRAWING ARM	530	IDLER ADJ. EYE BOLT
503	ECCENTRIC AND SPROCKET SHAFT	531	EYE BOLT SPACER WASHERS
504	PIN FOR ECCENTRIC	532	EYE BOLT SWIVEL PIN
505	ECCENTRIC PIN ADJUSTING SCREW	533	BUSHINGS FOR ECC. & SPRKT. SHAFT
506	SLEEVE FOR ECCENTRIC PIN	550	PITMAN KNOCKOFF NUT
507	WASHER FOR ECCENTRIC PIN	557	HUB FOR DRIVING SPROCKET
508	PITMAN		
509	PITMAN BUSHING - MAIN EYE	559	RETURN SPRING FOR DIE SLIDE
510	PITMAN BUSHING - SMALL EYE	560	SPRING ROD
518	HUB FOR DRIVEN SPROCKET	561	KNOB FOR SPRING ADJ.
519	DRIVEN SPROCKET		

300	DIE SLIDE COMPLETE WITH PARTS 301 TO 308 INCL.	400	GRIP BOX COMPLETE WITH PARTS LISTED BELOW
301	DIE SLIDE	401	GRIP BOX
302	DIE SLIDE COVER	403	HANDLE FOR GRIP BOX
303	DIE SLIDE COVER CLAMP	404	HOLLOW SCREW FOR GRIP BOX
304	DIE SLIDE BUSHING CLAMP	405	SPRING FOR GRIP BOX HOLLOW SCREW
305	DIE SLIDE BUSHING HOLDER	406	SCREWS FOR ROLLER CAGE ACTUATING SPRINGS
306	DIE SLIDE BUMPING PLATES	407	ROLLER CAGE ACTUATING SPRINGS
307	SPRING ROD SUPPORT PLATE	408	PINS FOR GRIP BLOCKS RELEASE
308	DIE SLIDE GASKET		
		410	PLUGS FOR ROLLER CAGE SPRING
		411	PIN FOR GRIP RELEASE HANDLE
		417	LOCKSCREWS FOR PLUG

WHEN ORDERING REPLACEMENTS STATE SERIAL NUMBER AND SIZE STAMPED ON NAMEPLATE OF MACHINE AND DESIGNATE PART BY BOTH NAME AND NUMBER.

THE AJAX MANUFACTURING COMPANY
CLEVELAND, OHIO 44117