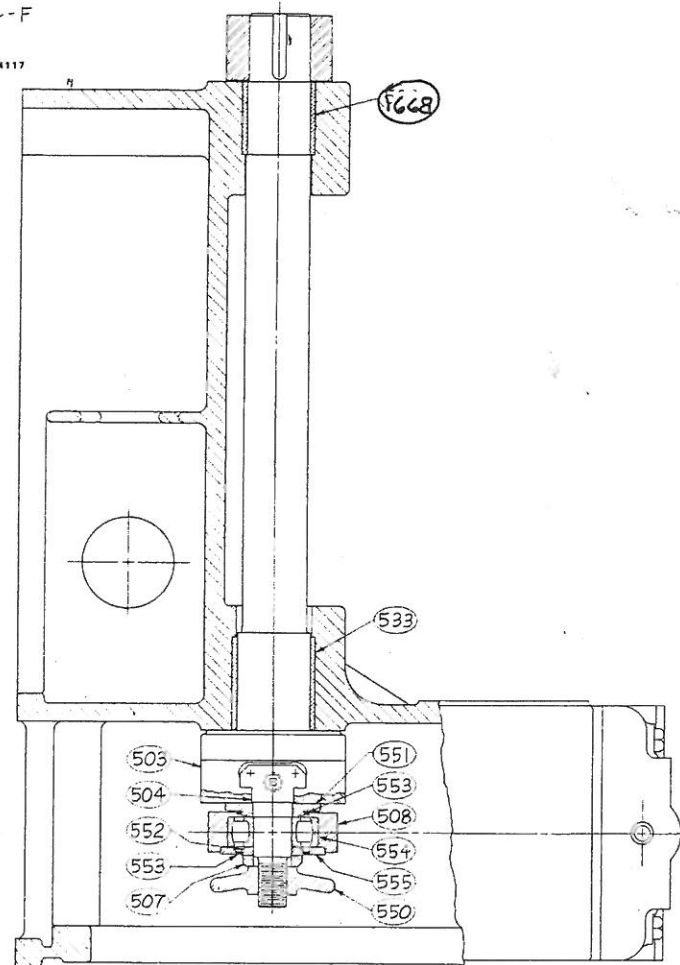
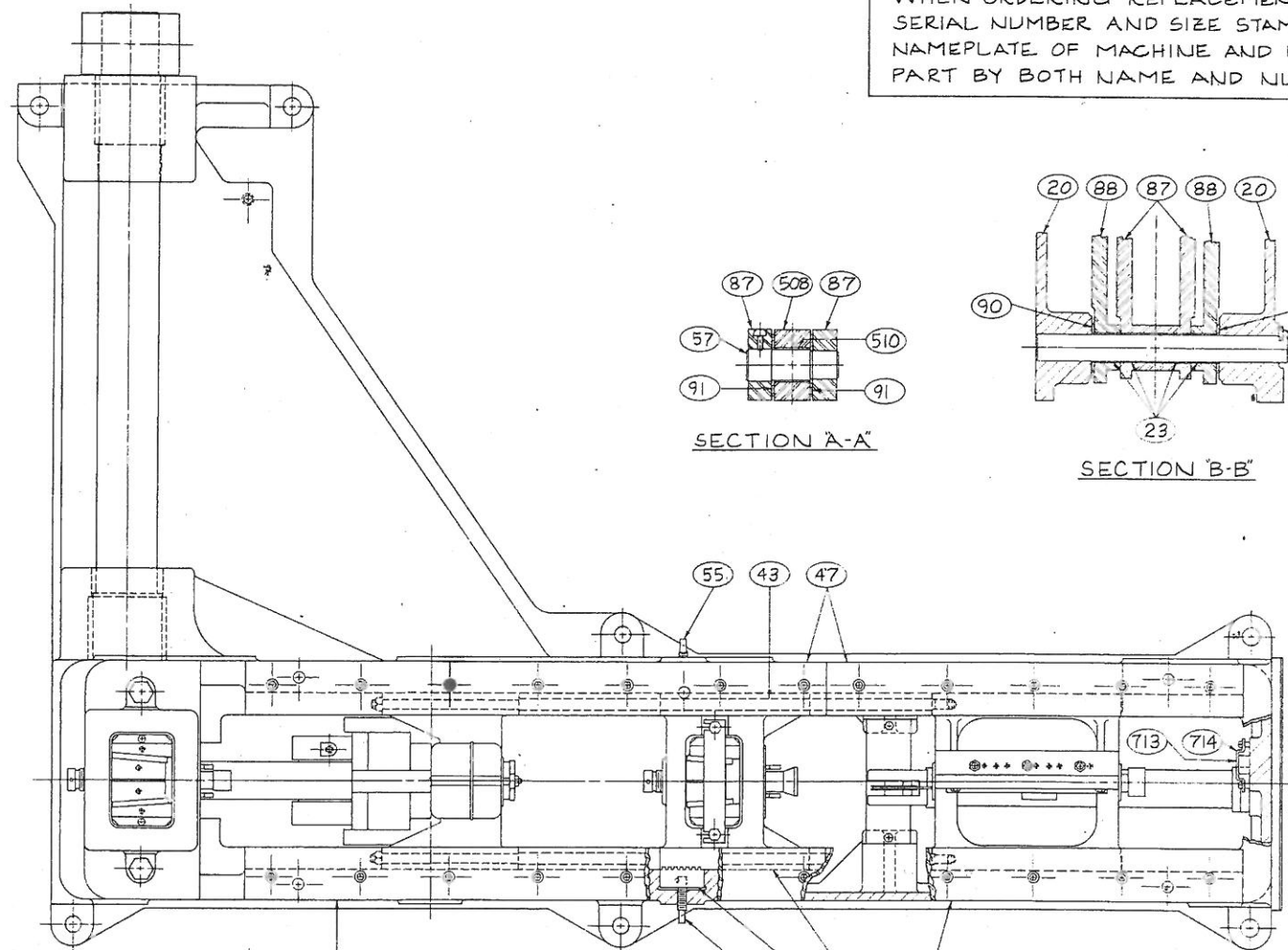


WIRE DRAWER  
PARTS LIST  
SHEET WD-4-F

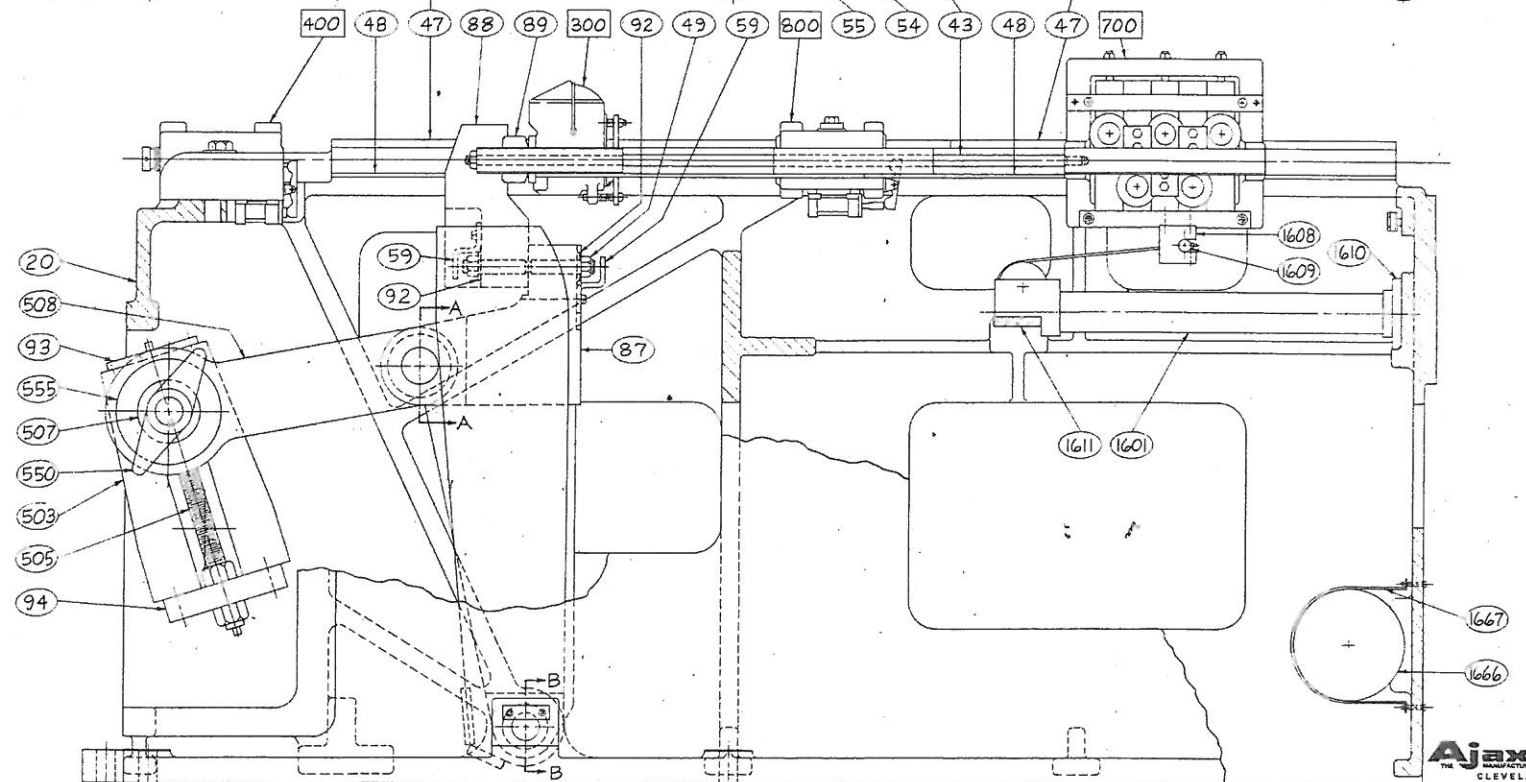
**Ajax**  
CLEVELAND, OHIO 44117



WHEN ORDERING REPLACEMENTS STATE SERIAL NUMBER AND SIZE STAMPED ON NAMEPLATE OF MACHINE AND DESIGNATE PART BY BOTH NAME AND NUMBER



- 20-BASE
- 22-FULCRUM PIN WITH RETAINER
- 23-BUSHINGS FOR FULCRUM ARM AND SAFETY LINK
- 43-RODS FOR STRAIGHTENER
- 47-COVER PLATES FOR BASE
- 48-SLIDE LINERS FOR BASE
- 49-BREAKER BOLT
- 54-CLAMP RACK FOR INCHING GRIP BOX
- 55-CLAMP SCREW FOR CLAMP RACK
- 57-PIN-PITMAN TO SAFETY LINK
- 59-KEEPER FOR BREAKER BOLT
- 87-SAFETY LINK
- 88-FULCRUM ARM
- 89-FULCRUM ARM INSERT (ORDER IN PAIRS)
- 90-FULCRUM PIN THRUST BUSHING
- 91-THRUST WASHER
- 92-SQUARE WASHER FOR BREAKER BOLT
- 93-GUIDE FOR ADJUSTING SCREW
- 94-STRAP FOR ADJUSTING SCREW
- 503-ECCENTRIC SHAFT
- 504-PIN FOR ECCENTRIC
- 505-ADJUSTING SCREW FOR ECCENTRIC PIN
- 507-CLAMP WASHER FOR PITMAN
- 508-PITMAN
- 510-PITMAN BUSHING-SMALL EYE
- 533-BUSHING FOR ECCENTRIC SHAFT (INNER)
- 550-PITMAN KNOCKOFF NUT
- 551-INNER SPACER RING FOR PITMAN BEARING
- 552-OUTER SPACER RING FOR PITMAN BEARING
- 553-OILSEALS FOR PITMAN
- 554-SPHERICAL BEARING FOR PITMAN
- 555-BEARING CLAMP RING FOR PITMAN
- 713-BUMPER WASHER BRACKET
- 714-BUMPER WASHER
- 1601-FEED ASSIST AIR CYLINDER
- 1608-ANCHOR FOR STRAIGHTENER RETURN CABLE
- 1609-PIN FOR STRAIGHTENER RETURN CABLE
- 1610-AIR CYLINDER MOUNTING PLATE
- 1611-AIR CYLINDER SUPPORT
- 1666-AIR TANK
- 1667-AIR TANK STRAP
- 1668-BUSHING FOR ECCENTRIC SHAFT (OUTER)



**Ajax**  
CLEVELAND, OHIO 44117

WIRE DRAWER  
PARTS LIST  
SHEET WD-4-F