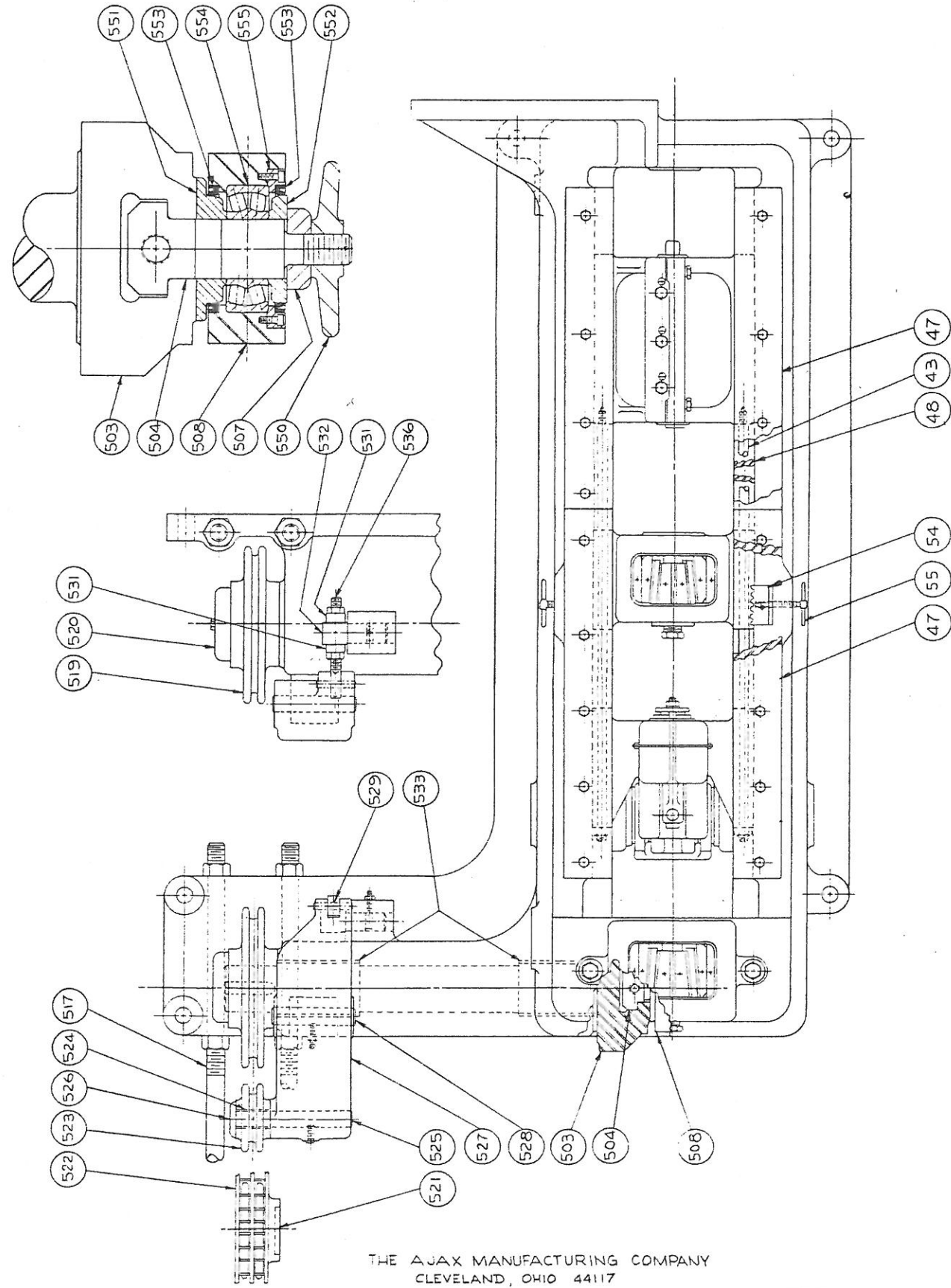
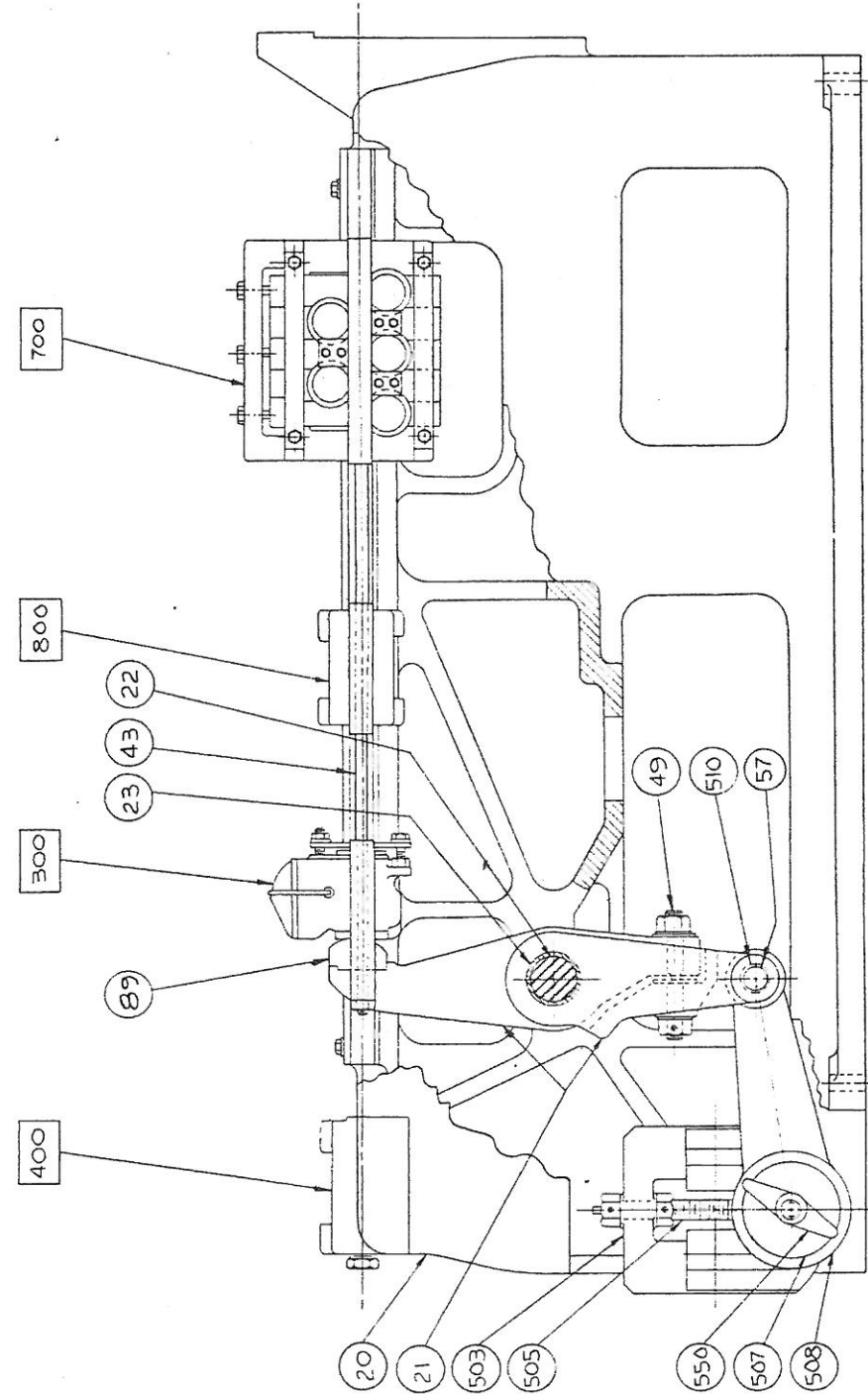


AJAX

AJAX



THE AJAX MANUFACTURING COMPANY
CLEVELAND, OHIO 44117



WHEN ORDERING REPLACEMENTS STATE
SERIAL NUMBER AND SIZE STAMPED ON
NAMEPLATE OF MACHINE AND
DESIGNATE PART BY BOTH NAME
AND NUMBER.

THE AJAX MANUFACTURING COMPANY
CLEVELAND, OHIO 44117

- | | | | |
|-----|------------------------------------|-----|------------------------------------|
| 20 | BASE | 510 | PITMAN BUSHING - SMALL EYE |
| 21 | DRAWING ARM | 517 | TIE RODS |
| 22 | DRAWING ARM FULCRUM PIN BUSHINGS | 519 | DRIVEN SPROCKET |
| 23 | DRAWING ARM FULCRUM PIN BUSHINGS | 520 | SPROCKET RETAINER WASHER |
| 43 | STRAIGHTENER RODS | 521 | DRIVING SPROCKET |
| 47 | COVER PLATES FOR SLIDES | 522 | ROLLER CHAIN SPROCKET |
| 48 | LINERS FOR BASE | 523 | ROLLER SPROCKET |
| 49 | BREAKER BOLT FOR DWG. ARM | 524 | IDLER ROLLER BEARING |
| 54 | CLAMPING RACKS FOR INCH GRIP BOX | 525 | IDLER ROLLER PIN |
| 55 | SCREWS FOR CLAMPING RACKS | 526 | IDLER ROLLER RETAINING CAP |
| 57 | PIN - PITMAN TO DRAWING ARM | 527 | IDLER ARM |
| 89 | FULCRUM ARM INSERT (ORDER IN PAIR) | 528 | IDLER ARM FULCRUM PIN |
| 503 | ECCENTRIC AND SPROCKET SHAFT | 529 | EYE BOLT LINK PIN |
| 504 | PIN FOR ECCENTRIC | 531 | EYE BOLT SPACER WASHERS |
| 505 | ECCENTRIC PIN ADJUSTING SCREW | 532 | EYE BOLT SWIVEL PIN |
| 507 | WASHER FOR ECCENTRIC PIN | 533 | BUSHINGS FOR ECC. & SPROCKET SHAFT |
| 508 | PITMAN | 536 | PITMAN BUSHING - SMALL EYE |
| | | 537 | TIE RODS |
| | | 538 | DRIVEN SPROCKET |
| | | 539 | SPROCKET RETAINER WASHER |
| | | 540 | DRIVING SPROCKET |
| | | 541 | ROLLER CHAIN SPROCKET |
| | | 542 | IDLER ROLLER BEARING |
| | | 543 | IDLER ROLLER PIN |
| | | 544 | IDLER ROLLER RETAINING CAP |
| | | 545 | IDLER ARM |
| | | 546 | IDLER ARM FULCRUM PIN |
| | | 547 | EYE BOLT LINK PIN |
| | | 548 | EYE BOLT SPACER WASHERS |
| | | 549 | EYE BOLT SWIVEL PIN |
| | | 550 | BUSHINGS FOR ECC. & SPROCKET SHAFT |
| | | 551 | PITMAN BUSHING - SMALL EYE |
| | | 552 | TIE RODS |
| | | 553 | DRIVEN SPROCKET |
| | | 554 | SPROCKET RETAINER WASHER |
| | | 555 | DRIVING SPROCKET |
| | | 556 | ROLLER CHAIN SPROCKET |
| | | 557 | ROLLER SPROCKET |
| | | 558 | IDLER ROLLER BEARING |
| | | 559 | IDLER ROLLER PIN |
| | | 560 | IDLER ROLLER RETAINING CAP |
| | | 561 | IDLER ARM |
| | | 562 | IDLER ARM FULCRUM PIN |
| | | 563 | EYE BOLT LINK PIN |
| | | 564 | EYE BOLT SPACER WASHERS |
| | | 565 | EYE BOLT SWIVEL PIN |
| | | 566 | BUSHINGS FOR ECC. & SPROCKET SHAFT |
| | | 567 | PITMAN BUSHING - SMALL EYE |
| | | 568 | TIE RODS |
| | | 569 | DRIVEN SPROCKET |
| | | 570 | SPROCKET RETAINER WASHER |
| | | 571 | DRIVING SPROCKET |
| | | 572 | ROLLER CHAIN SPROCKET |
| | | 573 | ROLLER SPROCKET |
| | | 574 | IDLER ROLLER BEARING |
| | | 575 | IDLER ROLLER PIN |
| | | 576 | IDLER ROLLER RETAINING CAP |
| | | 577 | IDLER ARM |
| | | 578 | IDLER ARM FULCRUM PIN |
| | | 579 | EYE BOLT LINK PIN |
| | | 580 | EYE BOLT SPACER WASHERS |
| | | 581 | EYE BOLT SWIVEL PIN |
| | | 582 | BUSHINGS FOR ECC. & SPROCKET SHAFT |
| | | 583 | PITMAN BUSHING - SMALL EYE |
| | | 584 | TIE RODS |
| | | 585 | DRIVEN SPROCKET |
| | | 586 | SPROCKET RETAINER WASHER |
| | | 587 | DRIVING SPROCKET |
| | | 588 | ROLLER CHAIN SPROCKET |
| | | 589 | ROLLER SPROCKET |
| | | 590 | IDLER ROLLER BEARING |
| | | 591 | IDLER ROLLER PIN |
| | | 592 | IDLER ROLLER RETAINING CAP |
| | | 593 | IDLER ARM |
| | | 594 | IDLER ARM FULCRUM PIN |
| | | 595 | EYE BOLT LINK PIN |
| | | 596 | EYE BOLT SPACER WASHERS |
| | | 597 | EYE BOLT SWIVEL PIN |
| | | 598 | BUSHINGS FOR ECC. & SPROCKET SHAFT |
| | | 599 | PITMAN BUSHING - SMALL EYE |
| | | 600 | TIE RODS |
| | | 601 | DRIVEN SPROCKET |
| | | 602 | SPROCKET RETAINER WASHER |
| | | 603 | DRIVING SPROCKET |
| | | 604 | ROLLER CHAIN SPROCKET |
| | | 605 | ROLLER SPROCKET |
| | | 606 | IDLER ROLLER BEARING |
| | | 607 | IDLER ROLLER PIN |
| | | 608 | IDLER ROLLER RETAINING CAP |
| | | 609 | IDLER ARM |
| | | 610 | IDLER ARM FULCRUM PIN |
| | | 611 | EYE BOLT LINK PIN |
| | | 612 | EYE BOLT SPACER WASHERS |
| | | 613 | EYE BOLT SWIVEL PIN |
| | | 614 | BUSHINGS FOR ECC. & SPROCKET SHAFT |
| | | 615 | PITMAN BUSHING - SMALL EYE |
| | | 616 | TIE RODS |
| | | 617 | DRIVEN SPROCKET |
| | | 618 | SPROCKET RETAINER WASHER |
| | | 619 | DRIVING SPROCKET |
| | | 620 | ROLLER CHAIN SPROCKET |
| | | 621 | ROLLER SPROCKET |
| | | 622 | IDLER ROLLER BEARING |
| | | 623 | IDLER ROLLER PIN |
| | | 624 | IDLER ROLLER RETAINING CAP |
| | | 625 | IDLER ARM |
| | | 626 | IDLER ARM FULCRUM PIN |
| | | 627 | EYE BOLT LINK PIN |
| | | 628 | EYE BOLT SPACER WASHERS |
| | | 629 | EYE BOLT SWIVEL PIN |
| | | 630 | BUSHINGS FOR ECC. & SPROCKET SHAFT |
| | | 631 | PITMAN BUSHING - SMALL EYE |
| | | 632 | TIE RODS |
| | | 633 | DRIVEN SPROCKET |
| | | 634 | SPROCKET RETAINER WASHER |
| | | 635 | DRIVING SPROCKET |
| | | 636 | ROLLER CHAIN SPROCKET |
| | | 637 | ROLLER SPROCKET |
| | | 638 | IDLER ROLLER BEARING |
| | | 639 | IDLER ROLLER PIN |
| | | 640 | IDLER ROLLER RETAINING CAP |
| | | 641 | IDLER ARM |
| | | 642 | IDLER ARM FULCRUM PIN |
| | | 643 | EYE BOLT LINK PIN |
| | | 644 | EYE BOLT SPACER WASHERS |
| | | 645 | EYE BOLT SWIVEL PIN |
| | | 646 | BUSHINGS FOR ECC. & SPROCKET SHAFT |
| | | 647 | PITMAN BUSHING - SMALL EYE |
| | | 648 | TIE RODS |
| | | 649 | DRIVEN SPROCKET |
| | | 650 | SPROCKET RETAINER WASHER |
| | | 651 | DRIVING SPROCKET |
| | | 652 | ROLLER CHAIN SPROCKET |
| | | 653 | ROLLER SPROCKET |
| | | 654 | IDLER ROLLER BEARING |
| | | 655 | IDLER ROLLER PIN |
| | | 656 | IDLER ROLLER RETAINING CAP |
| | | 657 | IDLER ARM |
| | | 658 | IDLER ARM FULCRUM PIN |
| | | 659 | EYE BOLT LINK PIN |
| | | 660 | EYE BOLT SPACER WASHERS |
| | | 661 | EYE BOLT SWIVEL PIN |
| | | 662 | BUSHINGS FOR ECC. & SPROCKET SHAFT |
| | | 663 | PITMAN BUSHING - SMALL EYE |
| | | 664 | TIE RODS |
| | | 665 | DRIVEN SPROCKET |
| | | 666 | SPROCKET RETAINER WASHER |
| | | 667 | DRIVING SPROCKET |
| | | 668 | ROLLER CHAIN SPROCKET |
| | | 669 | ROLLER SPROCKET |
| | | 670 | IDLER ROLLER BEARING |
| | | 671 | IDLER ROLLER PIN |
| | | 672 | IDLER ROLLER RETAINING CAP |
| | | 673 | IDLER ARM |
| | | 674 | IDLER ARM FULCRUM PIN |
| | | 675 | EYE BOLT LINK PIN |
| | | 676 | EYE BOLT SPACER WASHERS |
| | | 677 | EYE BOLT SWIVEL PIN |
| | | 678 | BUSHINGS FOR ECC. & SPROCKET SHAFT |
| | | 679 | PITMAN BUSHING - SMALL EYE |
| | | 680 | TIE RODS |
| | | 681 | DRIVEN SPROCKET |
| | | 682 | SPROCKET RETAINER WASHER |
| | | 683 | DRIVING SPROCKET |
| | | 684 | ROLLER CHAIN SPROCKET |
| | | 685 | ROLLER SPROCKET |
| | | 686 | IDLER ROLLER BEARING |
| | | 687 | IDLER ROLLER PIN |
| | | 688 | IDLER ROLLER RETAINING CAP |
| | | 689 | IDLER ARM |
| | | 690 | IDLER ARM FULCRUM PIN |
| | | 691 | EYE BOLT LINK PIN |
| | | 692 | EYE BOLT SPACER WASHERS |
| | | 693 | EYE BOLT SWIVEL PIN |
| | | 694 | BUSHINGS FOR ECC. & SPROCKET SHAFT |
| | | 695 | PITMAN BUSHING - SMALL EYE |
| | | 696 | TIE RODS |
| | | 697 | DRIVEN SPROCKET |
| | | 698 | SPROCKET RETAINER WASHER |
| | | 699 | DRIVING SPROCKET |
| | | 700 | ROLLER CHAIN SPROCKET |
| | | 701 | ROLLER SPROCKET |
| | | 702 | IDLER ROLLER BEARING |
| | | 703 | IDLER ROLLER PIN |
| | | 704 | IDLER ROLLER RETAINING CAP |
| | | 705 | IDLER ARM |
| | | 706 | IDLER ARM FULCRUM PIN |
| | | 707 | EYE BOLT LINK PIN |
| | | 708 | EYE BOLT SPACER WASHERS |
| | | 709 | EYE BOLT SWIVEL PIN |
| | | 710 | BUSHINGS FOR ECC. & SPROCKET SHAFT |
| | | 711 | PITMAN BUSHING - SMALL EYE |
| | | 712 | TIE RODS |
| | | 713 | DRIVEN SPROCKET |
| | | 714 | SPROCKET RETAINER WASHER |
| | | 715 | DRIVING SPROCKET |
| | | 716 | ROLLER CHAIN SPROCKET |
| | | 717 | ROLLER SPROCKET |
| | | 718 | IDLER ROLLER BEARING |
| | | 719 | IDLER ROLLER PIN |
| | | 720 | IDLER ROLLER RETAINING CAP |
| | | 721 | IDLER ARM |
| | | 722 | IDLER ARM FULCRUM PIN |
| | | 723 | EYE BOLT LINK PIN |
| | | 724 | EYE BOLT SPACER WASHERS |
| | | 725 | EYE BOLT SWIVEL PIN |
| | | 726 | BUSHINGS FOR ECC. & SPROCKET SHAFT |
| | | 727 | PITMAN BUSHING - SMALL EYE |
| | | 728 | TIE RODS |
| | | 729 | DRIVEN SPROCKET |
| | | 730 | SPROCKET RETAINER WASHER |
| | | 731 | DRIVING SPROCKET |
| | | 732 | ROLLER CHAIN SPROCKET |
| | | 733 | ROLLER SPROCKET |
| | | 734 | IDLER ROLLER BEARING |
| | | 735 | IDLER ROLLER PIN |
| | | 736 | IDLER ROLLER RETAINING CAP |
| | | 737 | IDLER ARM |
| | | 738 | IDLER ARM FULCRUM PIN |
| | | 739 | EYE BOLT LINK PIN |
| | | 740 | EYE BOLT SPACER WASHERS |
| | | 741 | EYE BOLT SWIVEL PIN |
| | | 742 | BUSHINGS FOR ECC. & SPROCKET SHAFT |
| | | 743 | PITMAN BUSHING - SMALL EYE |
| | | 744 | TIE RODS |
| | | 745 | DRIVEN SPROCKET |
| | | 746 | SPROCKET RETAINER WASHER |
| | | 747 | DRIVING SPROCKET |
| | | 748 | ROLLER CHAIN SPROCKET |
| | | 749 | ROLLER SPROCKET |
| | | 750 | IDLER ROLLER BEARING |
| | | 751 | IDLER ROLLER PIN |
| | | 752 | IDLER ROLLER RETAINING CAP |
| | | 753 | IDLER ARM |
| | | 754 | IDLER ARM FULCRUM PIN |
| | | 755 | EYE BOLT LINK PIN |
| | | 756 | EYE BOLT SPACER WASHERS |
| | | 757 | EYE BOLT SWIVEL PIN |
| | | 758 | BUSHINGS FOR ECC. & SPROCKET SHAFT |
| | | 759 | PITMAN BUSHING - SMALL EYE |
| | | 760 | TIE RODS |
| | | 761 | DRIVEN SPROCKET |
| | | 762 | SPROCKET RETAINER WASHER |
| | | 763 | DRIVING SPROCKET |
| | | 764 | ROLLER CHAIN SPROCKET |
| | | 765 | ROLLER SPROCKET |
| | | 766 | IDLER ROLLER BEARING |
| | | 767 | IDLER ROLLER PIN |
| | | 768 | IDLER ROLLER RETAINING CAP |
| | | 769 | IDLER ARM |
| | | 770 | IDLER ARM FULCRUM PIN |
| | | 771 | EYE BOLT LINK PIN |
| | | 772 | EYE BOLT SPACER WASHERS |
| | | 773 | EYE BOLT SWIVEL PIN |
| | | 774 | BUSHINGS FOR ECC. & SPROCKET SHAFT |
| | | 775 | PITMAN BUSHING - SMALL EYE |
| | | 776 | TIE RODS |
| | | 777 | DRIVEN SPROCKET |
| | | 778 | SPROCKET RETAINER WASHER |
| | | 779 | DRIVING SPROCKET |
| | | 780 | ROLLER CHAIN SPROCKET |
| | | 781 | ROLLER SPROCKET |
| | | 782 | IDLER ROLLER BEARING |
| | | 783 | IDLER ROLLER PIN |
| | | 784 | IDLER ROLLER RETAINING CAP |
| | | 785 | IDLER ARM |
| | | 786 | IDLER ARM FULCRUM PIN |
| | | 787 | EYE BOLT LINK PIN |
| | | 788 | EYE BOLT SPACER WASHERS |
| | | 789 | EYE BOLT SWIVEL PIN |
| | | 790 | BUSHINGS FOR ECC. & SPROCKET SHAFT |
| | | 791 | PITMAN BUSHING - SMALL EYE |
| | | 792 | TIE RODS |
| | | 793 | DRIVEN SPROCKET |
| | | 794 | SPROCKET RETAINER WASHER |
| | | 795 | DRIVING SPROCKET |
| | | 796 | ROLLER CHAIN SPROCKET |
| | | 797 | ROLLER SPROCKET |
| | | 798 | IDLER ROLLER BEARING |
| | | 799 | IDLER ROLLER PIN |
| | | 800 | IDLER ROLLER RETAINING CAP |
| | | 801 | IDLER ARM |
| | | 802 | IDLER ARM FULCRUM PIN |
| | | 803 | EYE BOLT LINK PIN |
| | | 804 | EYE BOLT SPACER WASHERS |
| | | 805 | EYE BOLT SWIVEL PIN |
| | | 806 | BUSHINGS FOR ECC. & SPROCKET SHAFT |
| | | 807 | PITMAN BUSHING - SMALL EYE |
| | | 808 | TIE RODS |
| | | 809 | DRIVEN SPROCKET |
| | | 810 | SPROCKET RETAINER WASHER |
| | | 811 | DRIVING SPROCKET |
| | | 812 | ROLLER CHAIN SPROCKET |
| | | 813 | ROLLER SPROCKET |
| | | 814 | IDLER ROLLER BEARING |
| | | 815 | IDLER ROLLER PIN |
| | | 816 | IDLER ROLLER RETAINING CAP |
| | | 817 | IDLER ARM |
| | | 818 | IDLER ARM FULCRUM PIN |
| | | 819 | EYE BOLT LINK PIN |
| | | 820 | EYE BOLT SPACER WASHERS |
| | | 821 | EYE BOLT SWIVEL PIN |
| | | 822 | BUSHINGS FOR ECC. & SPROCKET SHAFT |
| | | 823 | PITMAN BUSHING - SMALL EYE |
| | | | |