



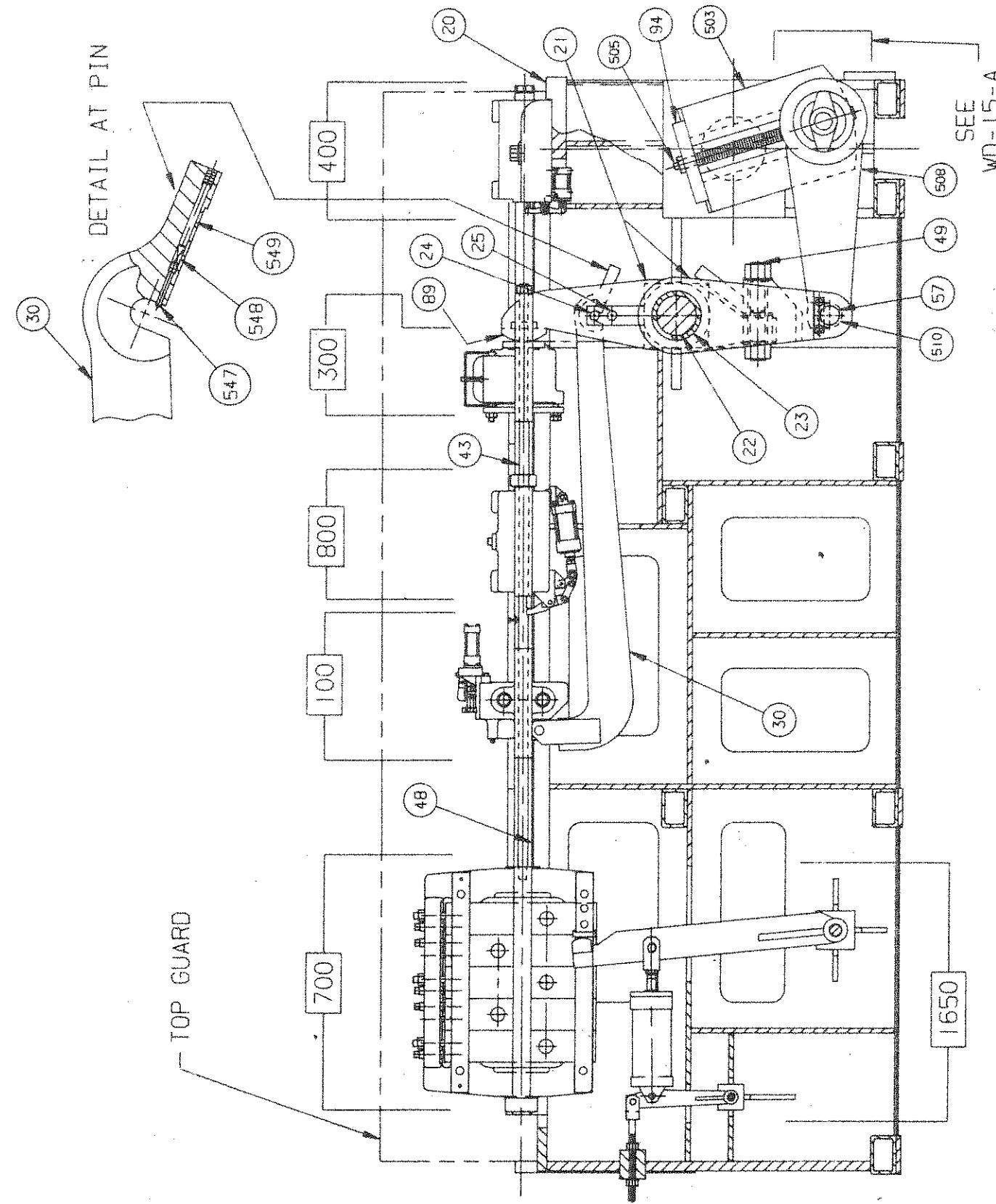
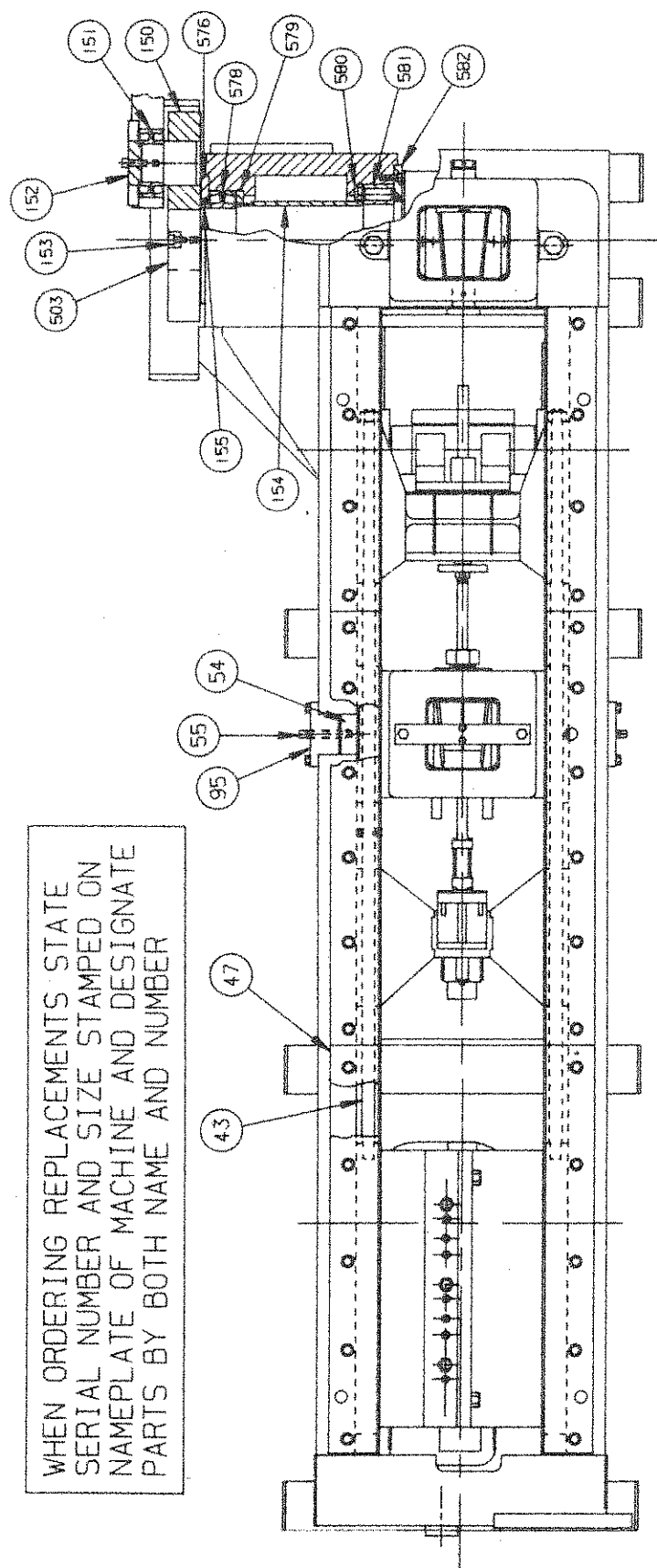
- 503 ECCENTRIC SHAFT
- 504 PIN FOR ECCENTRIC
- 505 ECCENTRIC PIN ADJUSTING SCREW
- 507 WASHER FOR ECCENTRIC PIN
- 508 PITMAN
- 510 PITMAN BUSHING - SMALL EYE
- 547 SPRING PLUG FOR ACTUATING LEVER
- 548 SPRING FOR ACTUATING LEVER
- 549 SPRING ROD FOR ACTUATING LEVER
- 550 KNOCKOFF NUT FOR PITMAN
- 576 ECCENTRIC SHAFT OUTER BEARING RETAINER & SEAL
- 578 ECCENTRIC SHAFT OUTER BEARING
- 579 ECCENTRIC SHAFT OUTER BEARING SPACER
- 580 ECCENTRIC SHAFT INNER BEARING
- 581 ECCENTRIC SHAFT INNER BEARING
- 582 ECCENTRIC SHAFT INNER BEARING RETAINER & SEAL

SUB-ASSEMBLIES:

- 100 INCHING FEED SLIDE - SEE SHEET WD-21--
- 300 DIE SLIDE - SEE SHEET WD-6--
- 400 (WIRE) GRIP BOX - SEE SHEET WD-5--
- 700 STRAIGHTENER - SEE SHEET WD-8--
- 800 INCHING GRIP BOX - SEE SHEET WD-7--
- 1650 FEED ASSIST - SEE SHEET WD-14--

- 20 BASE
- 21 DRAWING ARM (TWO PIECE)
- 22 DRAWING ARM FULCRUM PIN
- 23 DRAWING ARM FULCRUM PIN BUSHINGS
- 24 REMOVABLE PIN FOR DRAWING & INCHING ARMS
- 25 FIXED PIN FOR DRAWING ARM & INCHING ARM
- 30 INCHING ARM
- 43 STRAIGHTENER RODS
- 47 COVER PLATES FOR SLIDES
- 48 LINERS FOR BASE
- 49 BREAKER BOLT FOR DRAWING ARM
- 54 CLAMPING RACKS FOR INCH GRIP BOX
- 55 ADJ. SCREW FOR CLAMPING RACKS
- 57 PIN - PITMAN TO DRAWING ARM
- 89 INSERT FOR DRAWING ARM (ORDER IN PAIRS)
- 94 STRAP FOR ADJUSTING SCREW
- 95 RETAINER FOR INCHING GRIP CLAMPING RACK
- 150 ECCENTRIC SHAFT DRIVE LEVER
- 151 DRIVE LEVER BEARING
- 152 DRIVE LEVER BEARING RETAINER CAP
- 153 DRIVE LEVER KEY/RETAINER
- 154 ECCENTRIC SHAFT BEARINGS SPACER SLEEVE
- 155 ECCENTRIC SHAFT OUTER BEARING SPACER

WHEN ORDERING REPLACEMENTS STATE SERIAL NUMBER AND SIZE STAMPED ON NAMEPLATE OF MACHINE AND DESIGNATE PARTS BY BOTH NAME AND NUMBER



SEE
WD-15-A