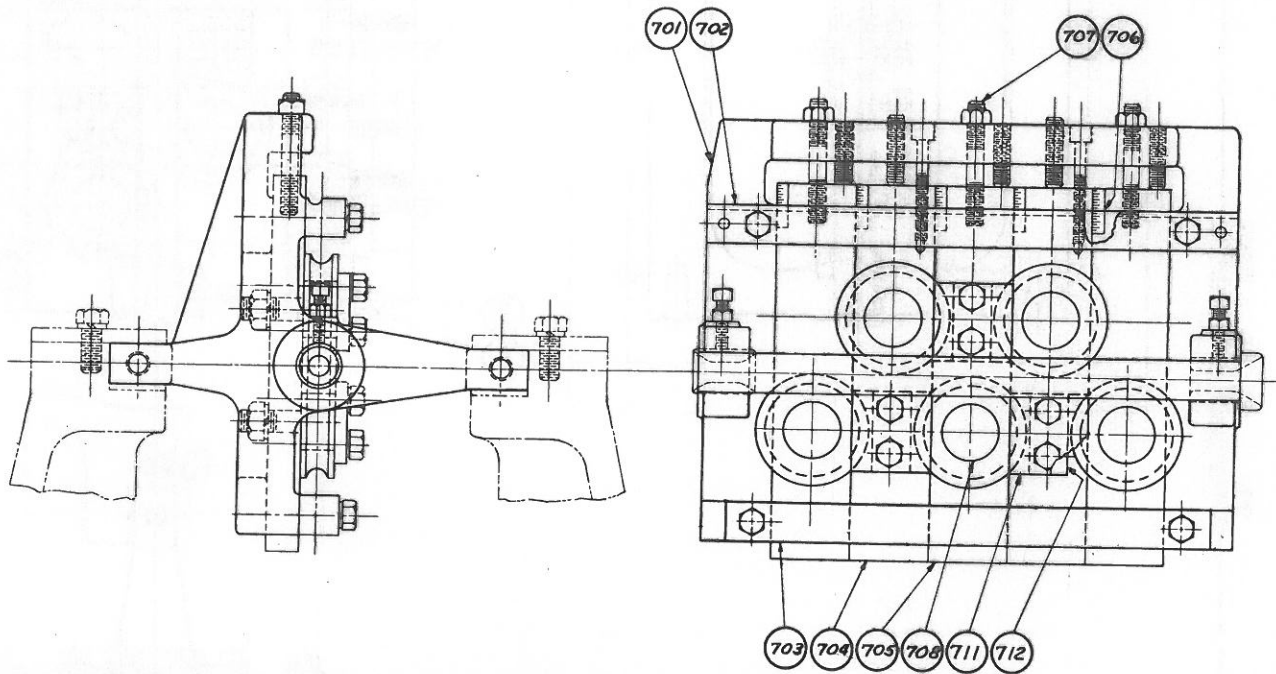
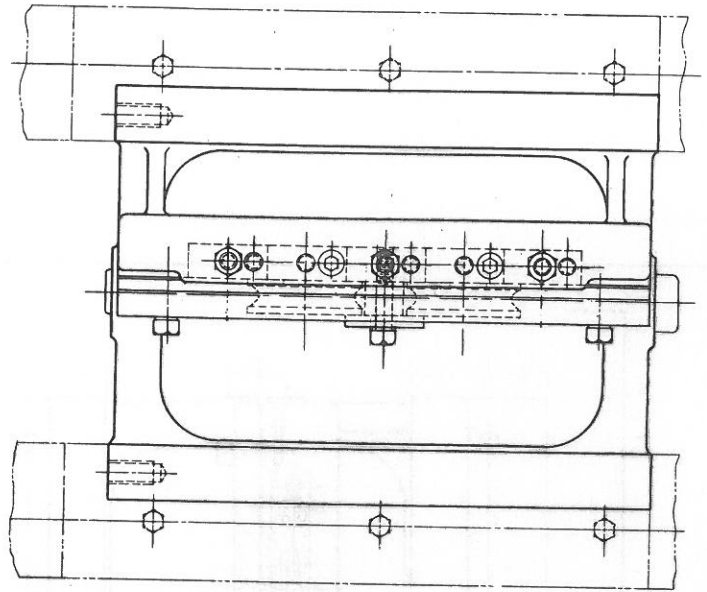


**STRAIGHTENER  
PARTS LIST**

**SHEET WD-8-A**

**AJAX**



**700 STRAIGHTENER COMPLETE WITH PARTS LISTED BELOW**

- 701 STRAIGHTENING ROLLER BRACKET**
- 702 STRAIGHTENING SLIDE RETAINER BAR (UPPER)**
- 703 STRAIGHTENING SLIDE RETAINER BAR (LOWER)**
- 704 STRAIGHTENING ROLLER SLIDES**
- 705 STRAIGHTENING ROLLER SLIDES**
- 706 STRAIGHTENING SLIDE SCALES**
- 707 STUDS FOR STRAIGHTENING SLIDES**
- 708 STRAIGHTENING ROLLER BEARINGS & STUDS**
- 711 STRAIGHTENING ROLLER RETAINER PLATES**
- 712 RETAINER PLATE SPACER BLOCKS**

**WHEN ORDERING REPLACEMENTS STATE  
SERIAL NUMBER AND SIZE STAMPED ON  
NAME PLATE OF MACHINE AND DESIGNATE  
PART BY BOTH NAME AND NUMBER**

**THE AJAX MANUFACTURING COMPANY  
CLEVELAND (17), OHIO**